



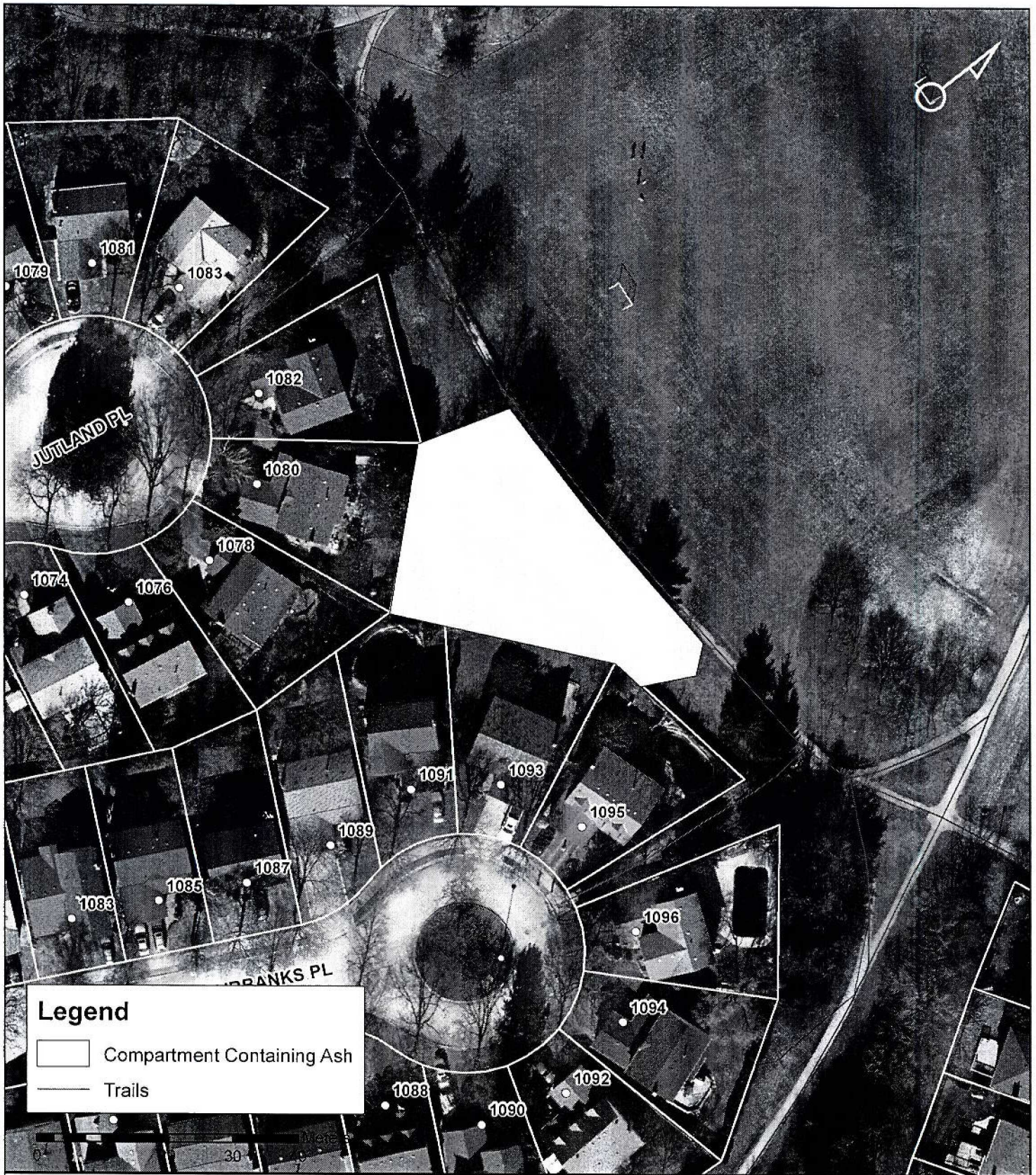
OAKVILLE

Corporation of the Town of Oakville
 1225 Trafalgar Road
 Oakville, ON L6H 0H3
 Tel. 905-845-6601
www.oakville.ca

Colburne Park - Woodland ID 3

Forest Compartments Containing Ash
 Level of impact to public due to EAB - HIGH

1:1,400

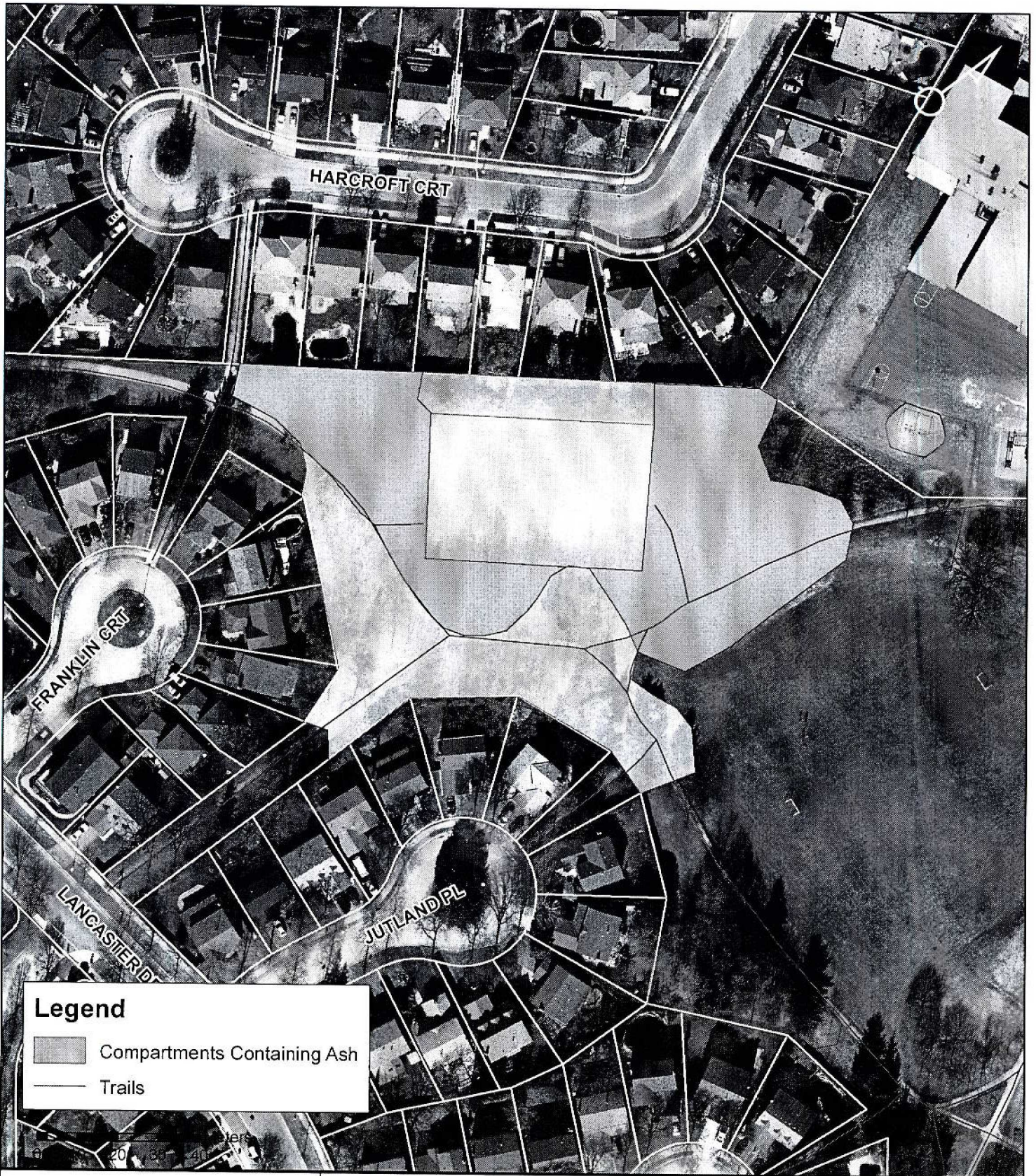


OAKVILLE

Corporation of the Town of Oakville
1225 Trafalgar Road
Oakville, ON L6H 0H3
Tel. 905-845-6601
www.oakville.ca

Sheridan Hills - Woodland ID 15

Forest Compartments Containing Ash
Level of impact to public due to EAB - LOW



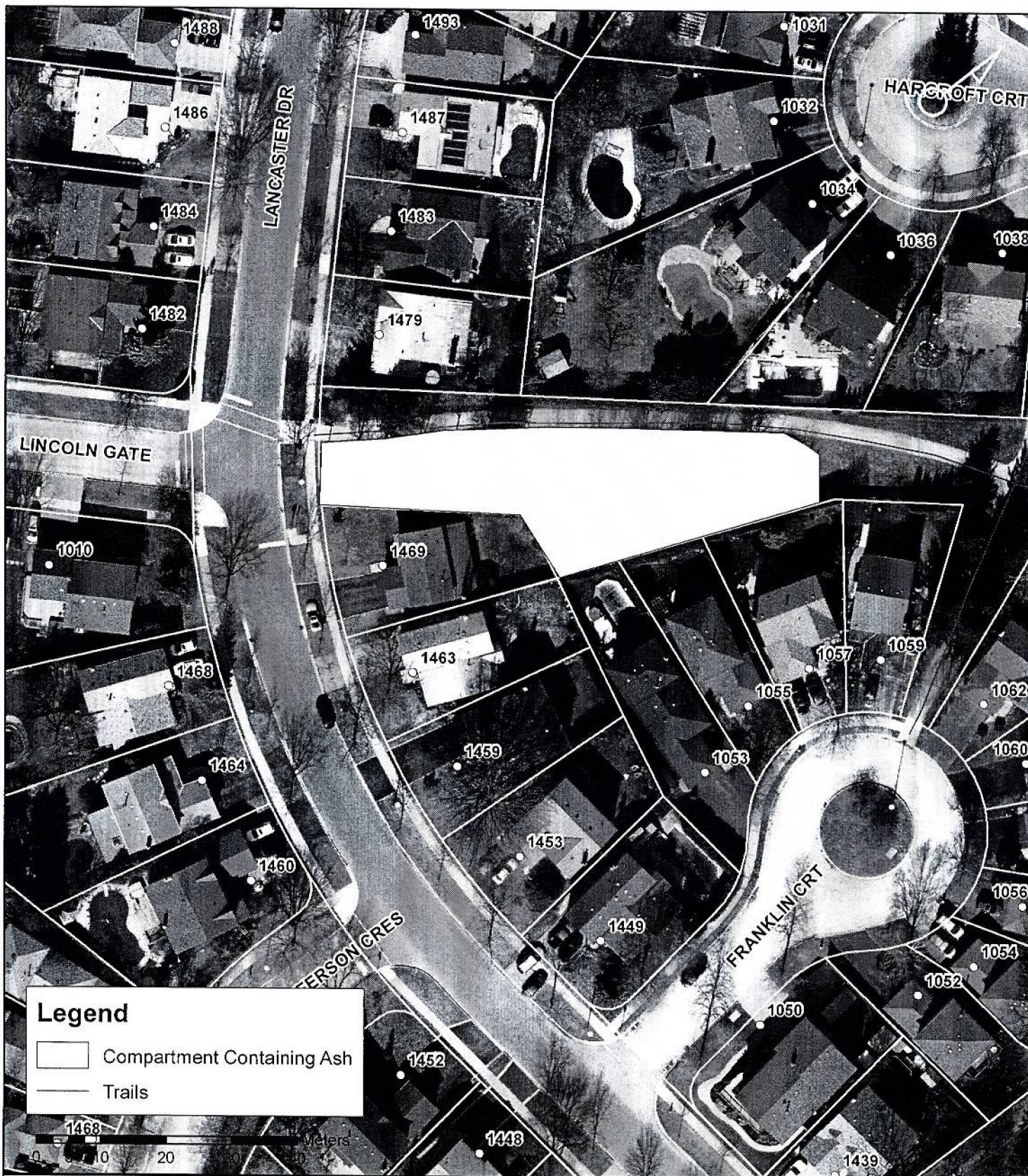
OAKVILLE

Corporation of the Town of Oakville
1225 Trafalgar Road
Oakville, ON L6H 0H3
Tel. 905-845-6601
www.oakville.ca

Sheridan Hills 2 - Woodland ID 16

Forest Compartments Containing Ash
Level of impact to public due to EAB - MEDIUM

1:1,250



OAKVILLE

Corporation of the Town of Oakville
 1225 Trafalgar Road
 Oakville, ON L6H 0H3
 Tel. 905-845-6601
www.oakville.ca

Sheridan Hills - Woodland ID 17

Forest Compartments Containing Ash
Level of impact to public due to EAB - LOW

1:779



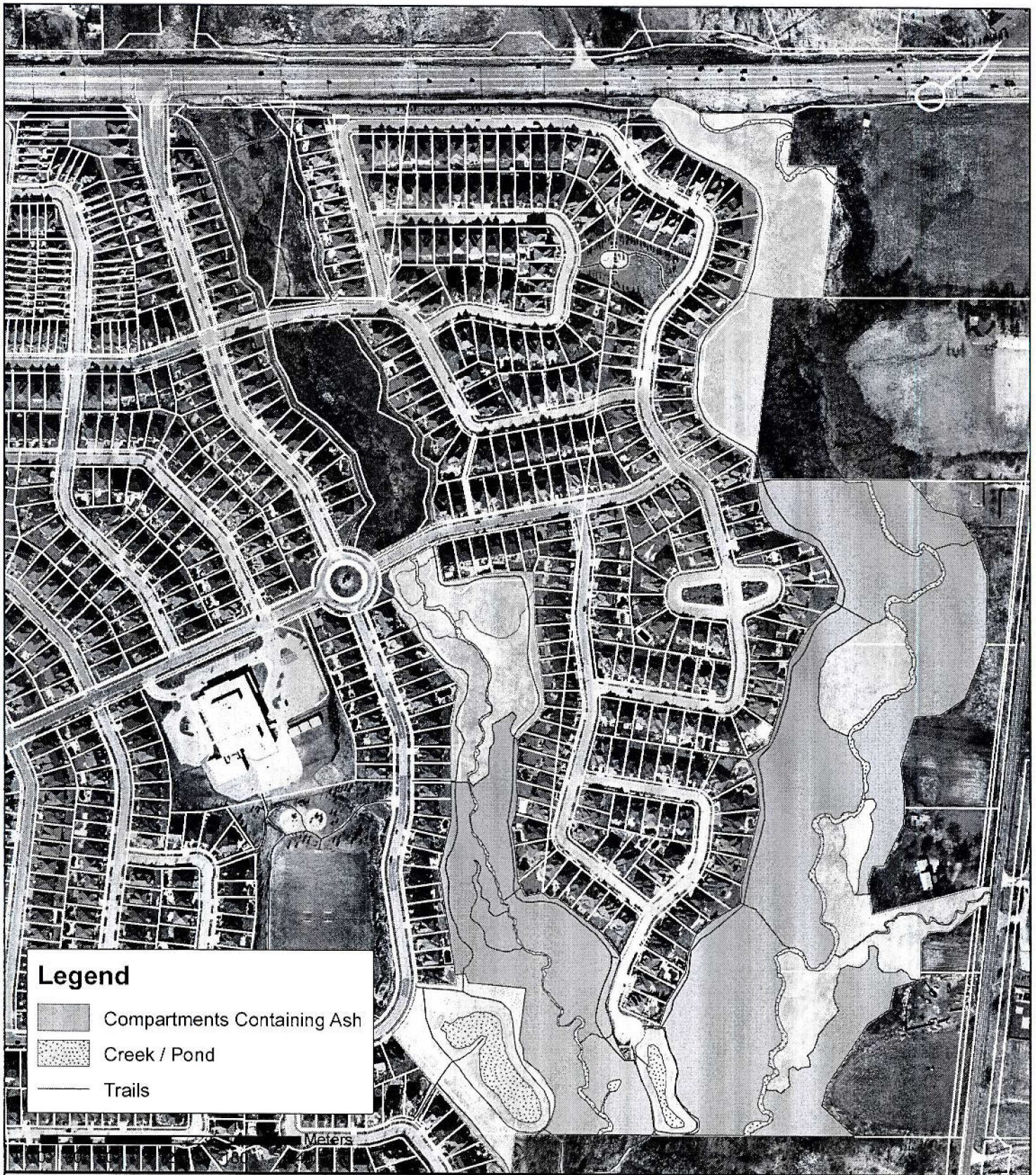
OAKVILLE

Corporation of the Town of Oakville
 1225 Trafalgar Road
 Oakville, ON L6H 0H3
 Tel. 905-845-6601
www.oakville.ca

Clear Water Woods - Woodland ID 22

Forest Compartments Containing Ash
 Level of impact to public due to EAB - HIGH

1:2,900



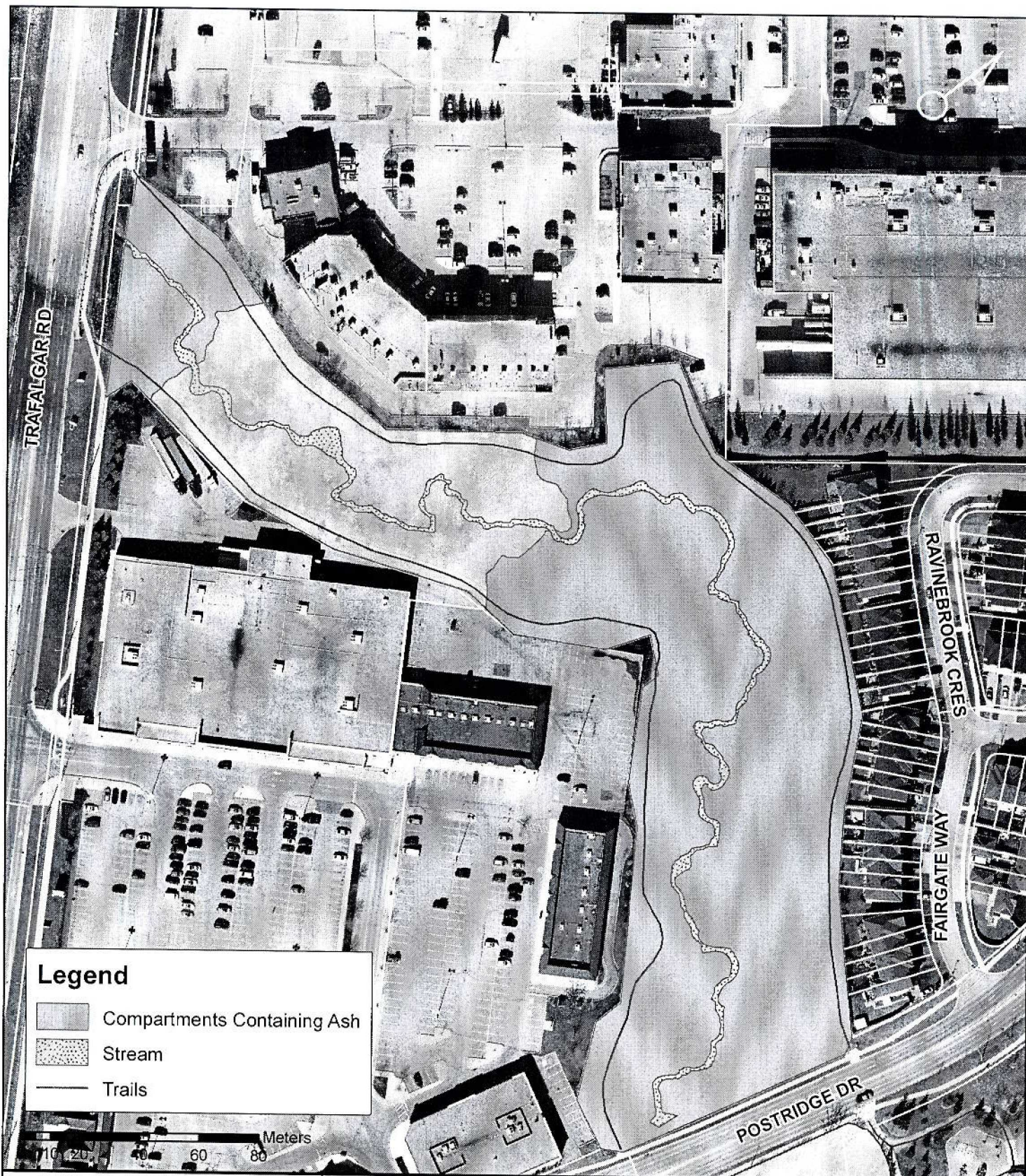
OAKVILLE

Corporation of the Town of Oakville
1225 Trafalgar Road
Oakville, ON L6H 0H3
Tel. 905-845-6601
www.oakville.ca

East Joshua - Woodland ID 27

Forest Compartments Containing Ash
Level of impact to public due to EAB - MEDIUM

1:4,715



OAKVILLE

Corporation of the Town of Oakville
 1225 Trafalgar Road
 Oakville, ON L6H 0H3
 Tel. 905-845-6601
www.oakville.ca

Morrison Valley North UMR - Woodland ID 29

Forest Compartments Containing Ash
Level of impact to public due to EAB - MEDIUM

1:1,700



Legend (Map 1 of 2)

-  Compartments Containing Ash
-  Trails



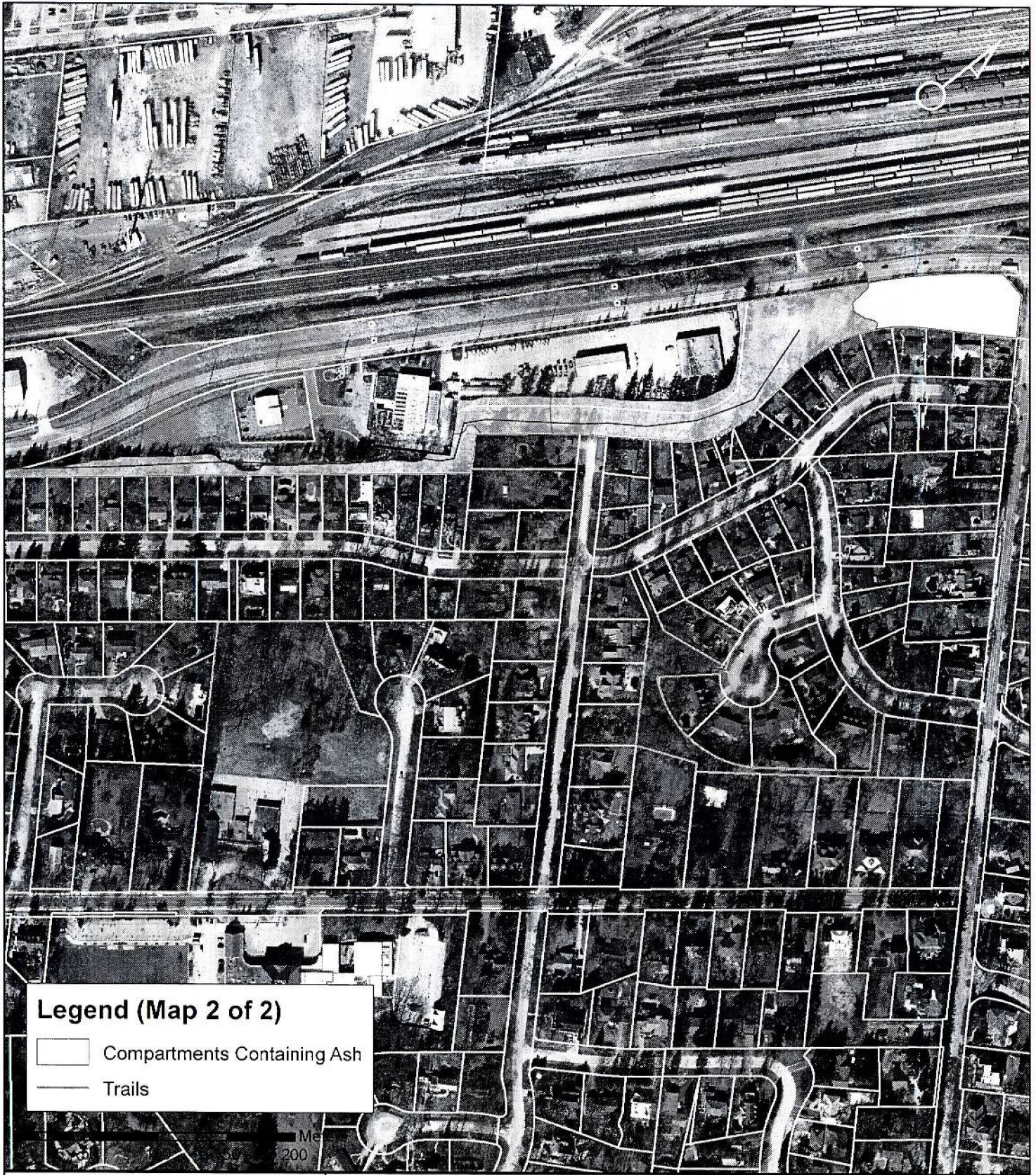
OAKVILLE

Corporation of the Town of Oakville
1225 Trafalgar Road
Oakville, ON L6H 0H3
Tel. 905-845-6601
www.oakville.ca

Cornwall Road Buffer - Woodland ID 30

Forest Compartments Containing Ash
Level of impact to public due to EAB - LOW

1:1,000



Legend (Map 2 of 2)

- Compartments Containing Ash
- Trails



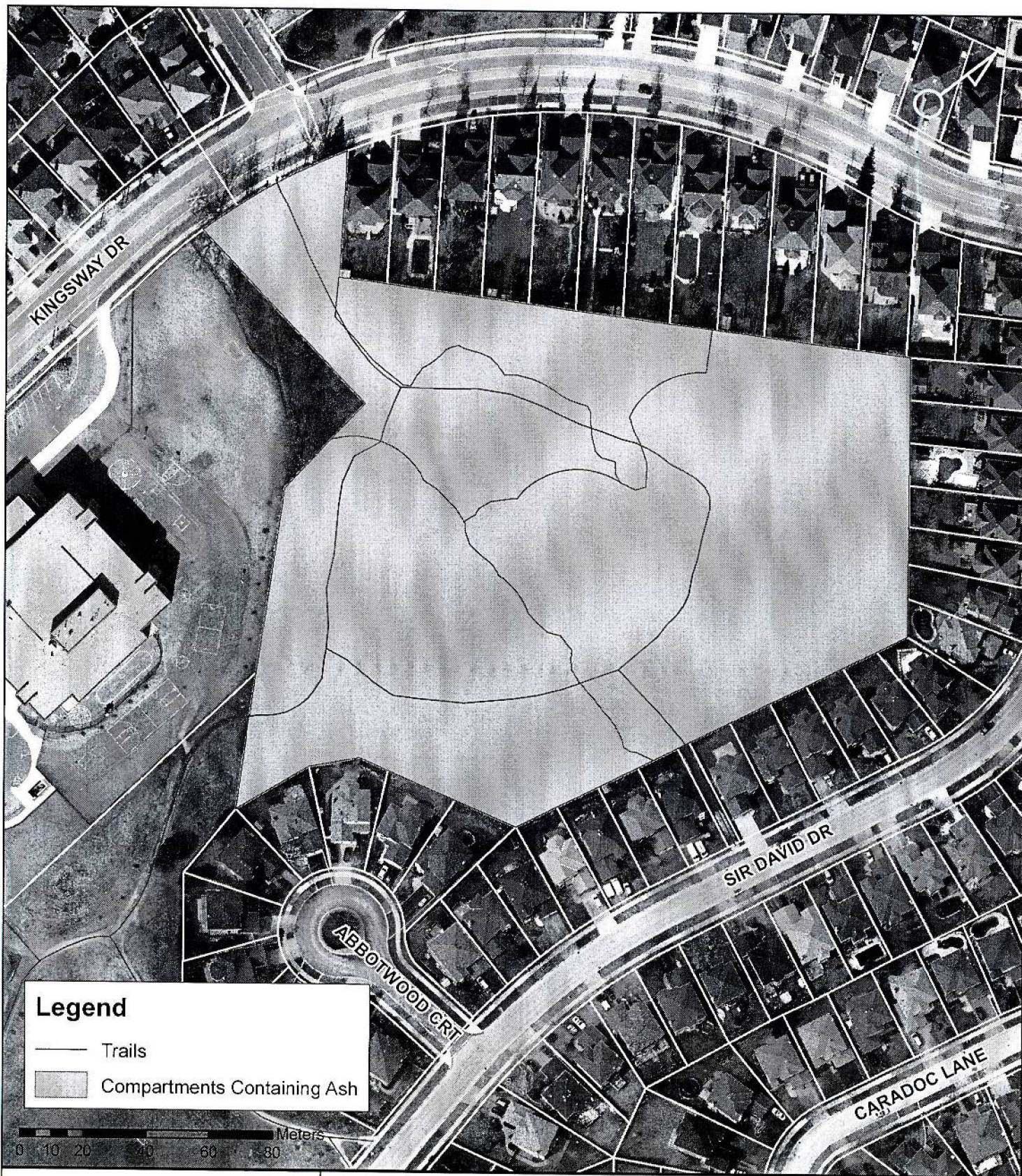
OAKVILLE

Corporation of the Town of Oakville
1225 Trafalgar Road
Oakville, ON L6H 0H3
Tel. 905-845-6601
www.oakville.ca

Cornwall Road Buffer - Woodland ID 30

Forest Compartments Containing Ash
Level of impact to public due to EAB - LOW

1:3,732



OAKVILLE

Corporation of the Town of Oakville
1225 Trafalgar Road
Oakville, ON L6H 0H3
Tel. 905-845-6601
www.oakville.ca

Clearview Woods - Woodland ID 63

Forest Compartments Containing Ash
Level of impact to public due to EAB - MEDIUM

1:1,600



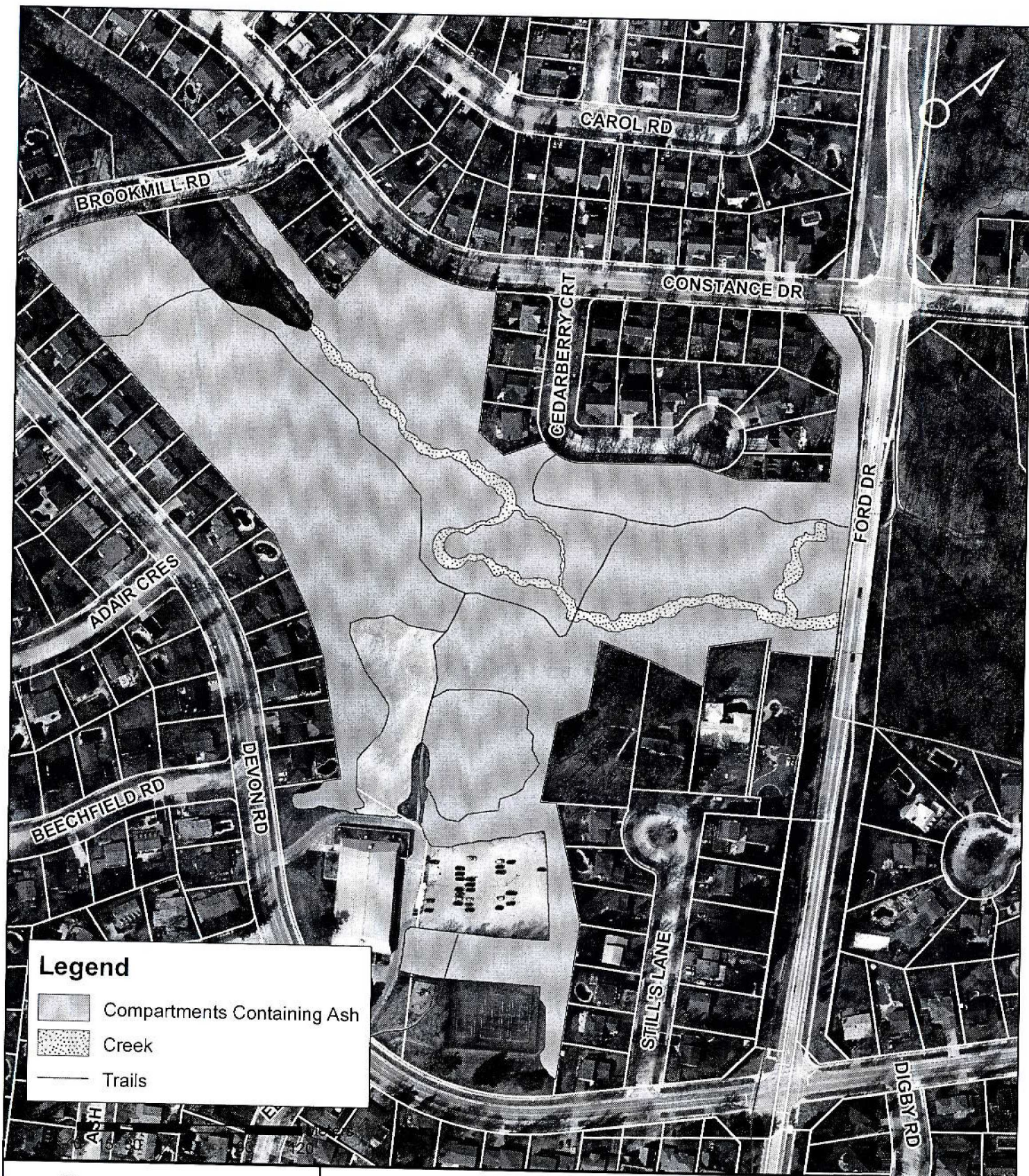
OAKVILLE

Corporation of the Town of Oakville
1225 Trafalgar Road
Oakville, ON L6H 0H3
Tel. 905-845-6601
www.oakville.ca

Dunvegan Park - Woodland ID 69

Forest Compartments Containing Ash
Level of impact to public due to EAB - MEDIUM

1:1,000



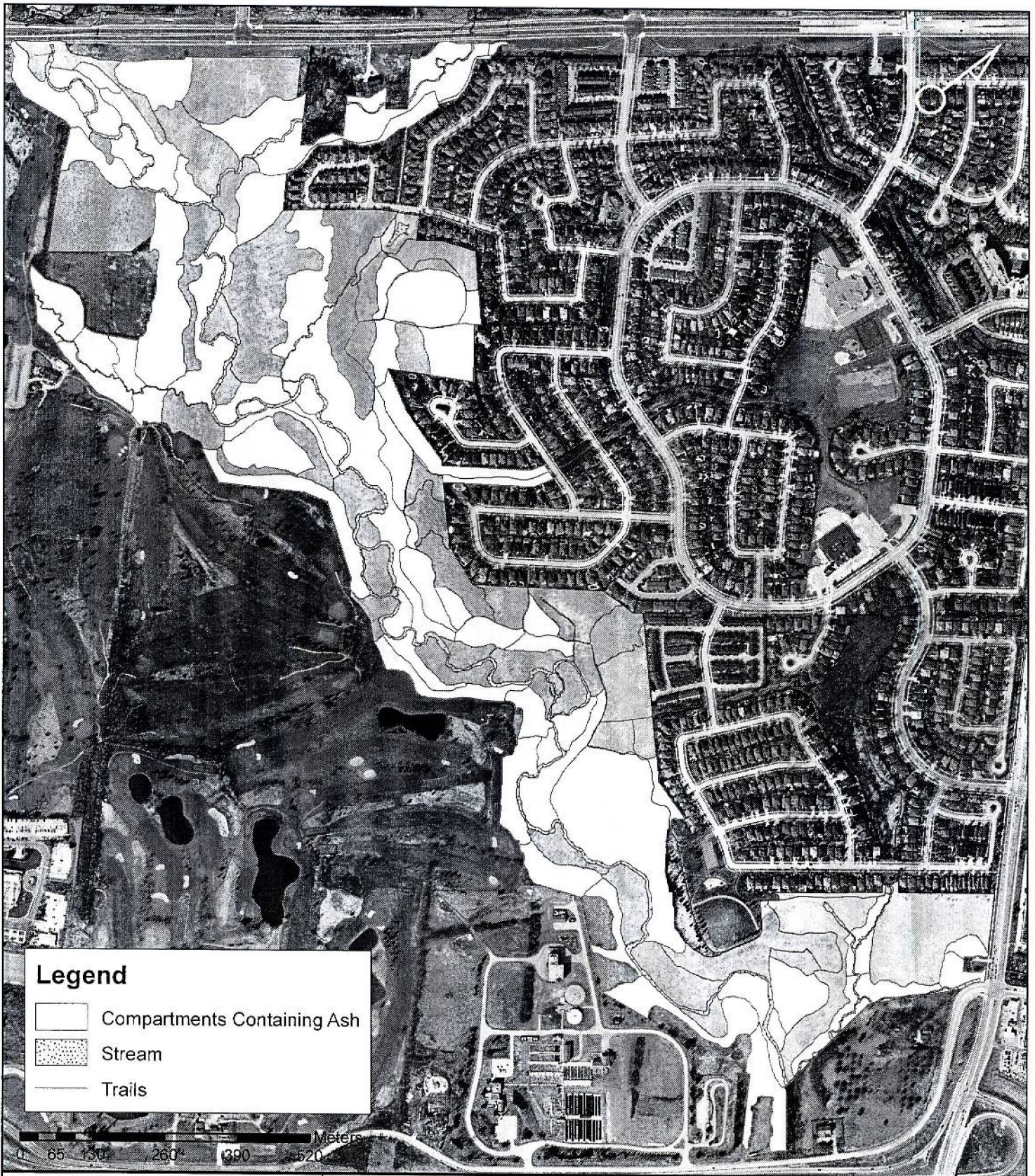
OAKVILLE

Corporation of the Town of Oakville
 1225 Trafalgar Road
 Oakville, ON L6H 0H3
 Tel. 905-845-6601
www.oakville.ca

Joshua Valley Park / Maplegrove Park - Woodland ID 71

Forest Compartments Containing Ash
 Level of impact to public due to EAB - MEDIUM

1:2,699



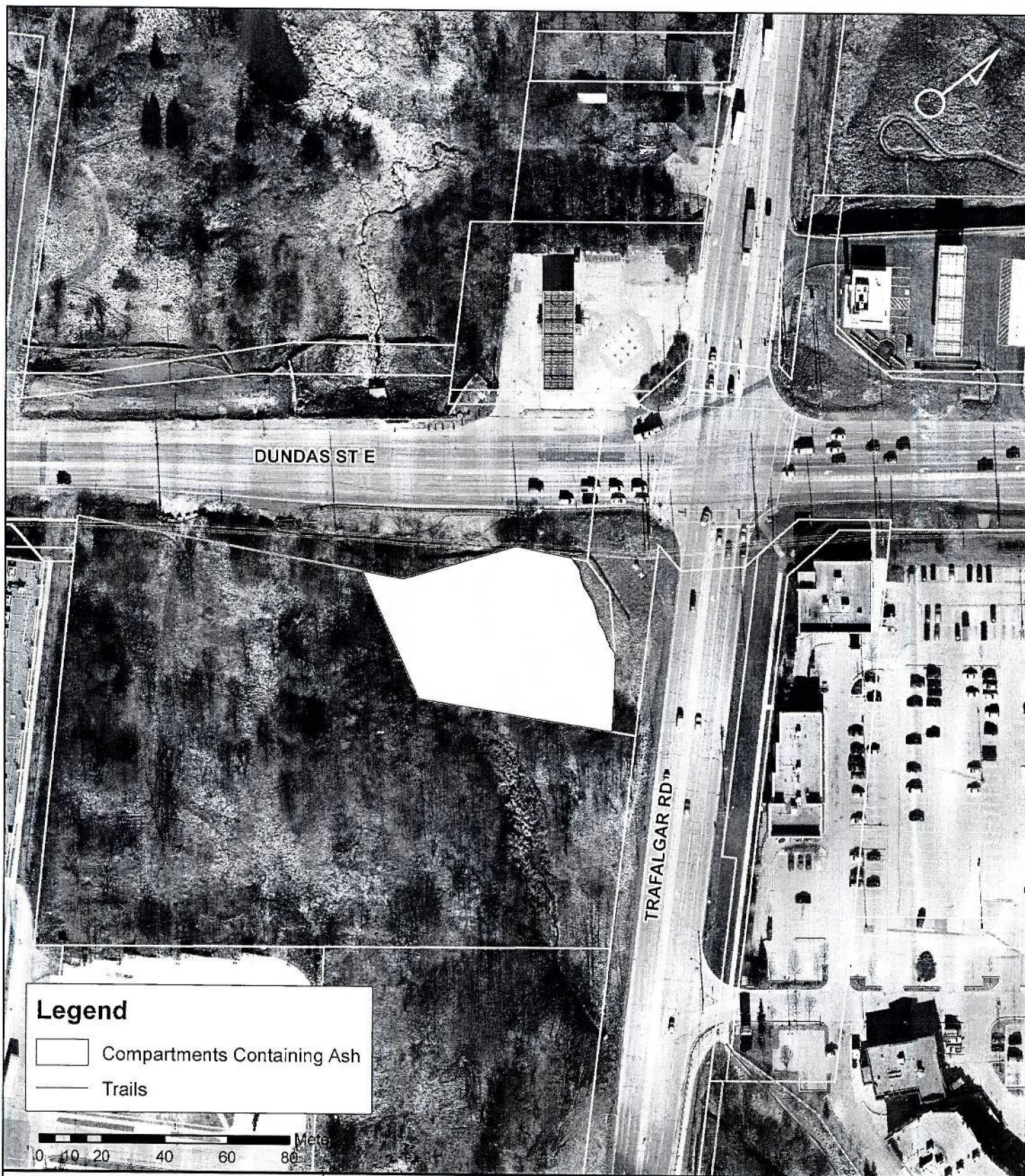
OAKVILLE

Corporation of the Town of Oakville
1225 Trafalgar Road
Oakville, ON L6H 0H3
Tel. 905-845-6601
www.oakville.ca

Fourteen Mile Creek - Woodland ID 75

Forest Compartments Containing Ash
Level of impact to public due to EAB - LOW

1:9,100



OAKVILLE

Corporation of the Town of Oakville
1225 Trafalgar Road
Oakville, ON L6H 0H3
Tel. 905-845-6601
www.oakville.ca

Fiskin Property - Woodland ID 89

Forest Compartments Containing Ash
Level of impact to public due to EAB - LOW

1:1,624



OAKVILLE

Corporation of the Town of Oakville
 1225 Trafalgar Road
 Oakville, ON L6H 0H3
 Tel. 905-845-6601
www.oakville.ca

Nipegon Trail - Woodland ID 98

Forest Compartments Containing Ash
 Level of impact to public due to EAB - HIGH



Legend

-  Compartments Containing Ash
-  Creek
-  Trails



OAKVILLE

Corporation of the Town of Oakville
1225 Trafalgar Road
Oakville, ON L6H 0H3
Tel. 905-845-6601
www.oakville.ca

Pelee Woods Park - Woodland ID 99

Forest Compartments Containing Ash
Level of impact to public due to EAB - HIGH

1:5,000



Legend

-  Compartments Containing Ash
-  Stream / Drainage
-  Trails



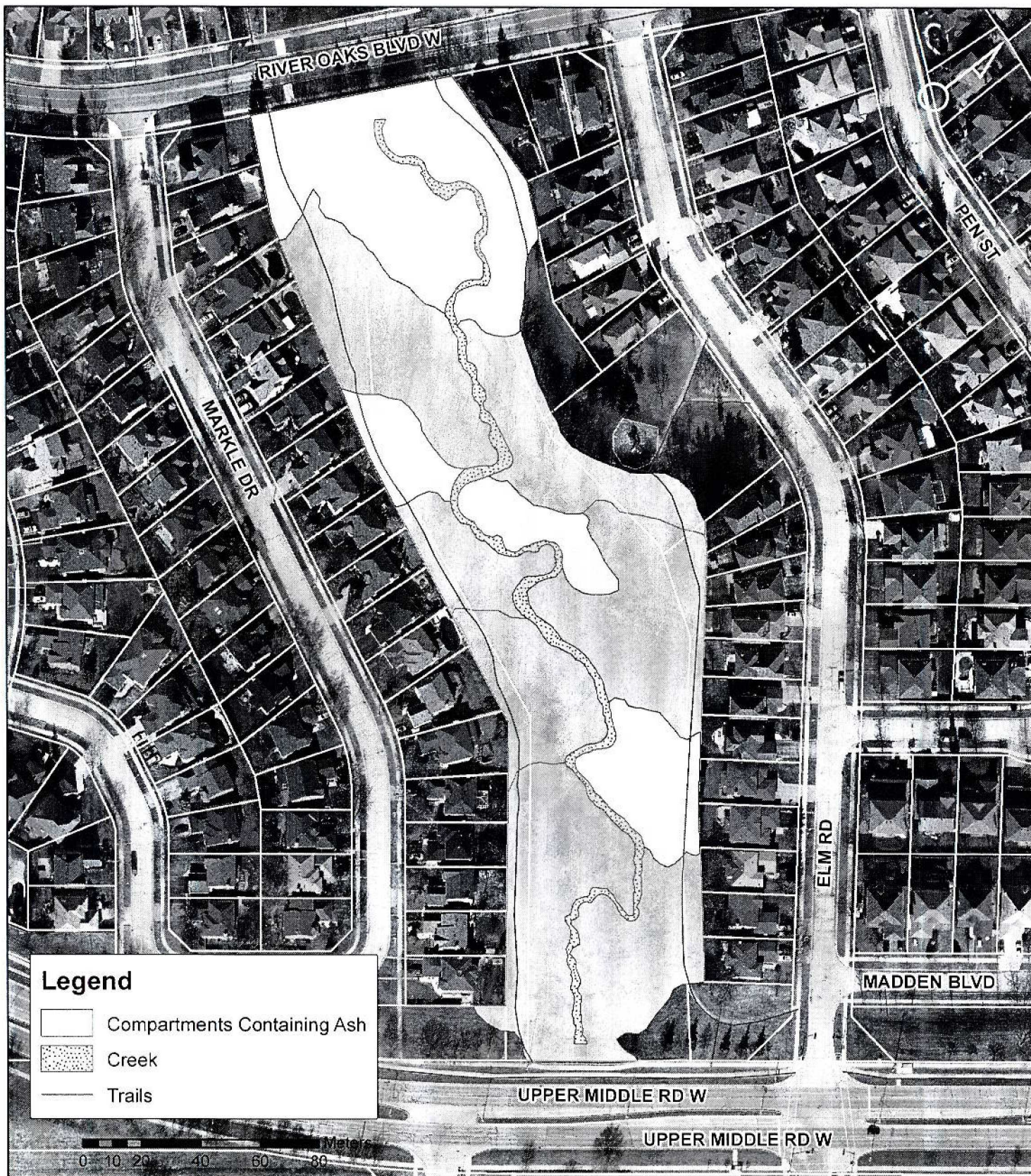
OAKVILLE

Corporation of the Town of Oakville
1225 Trafalgar Road
Oakville, ON L6H 0H3
Tel. 905-845-6601
www.oakville.ca

Munns Creek Trail 4 - Woodland ID 100

Forest Compartments Containing Ash
Level of impact to public due to EAB - MEDIUM

1:1,000



OAKVILLE

Corporation of the Town of Oakville
 1225 Trafalgar Road
 Oakville, ON L6H 0H3
 Tel. 905-845-6601
www.oakville.ca

Munns Creek Trail 3 - Woodland ID 106

Forest Compartments Containing Ash
 Level of impact to public due to EAB - LOW

1:1,728



Legend

- Compartments Containing Ash
- Stream
- Trails



OAKVILLE

Corporation of the Town of Oakville
1225 Trafalgar Road
Oakville, ON L6H 0H3
Tel. 905-845-6601
www.oakville.ca

Shannon Creek Trail - Woodland ID 109

Forest Compartments Containing Ash
Level of impact to public due to EAB - HIGH

1:2,350



OAKVILLE

Corporation of the Town of Oakville
1225 Trafalgar Road
Oakville, ON L6H 0H3
Tel. 905-845-6601
www.oakville.ca

Shannon Creek Trail 4 - Woodland ID 110

Forest Compartments Containing Ash
Level of impact to public due to EAB - HIGH

1:1,200



Legend

- Compartments Containing Ash
- Trails



OAKVILLE

Corporation of the Town of Oakville
 1225 Trafalgar Road
 Oakville, ON L6H 0H3
 Tel. 905-845-6601
www.oakville.ca

Shannon Creek Trail 2 - Woodland ID 111

Forest Compartments Containing Ash
 Level of impact to public due to EAB - HIGH

1:1,400



OAKVILLE

Corporation of the Town of Oakville
1225 Trafalgar Road
Oakville, ON L6H 0H3
Tel. 905-845-6601
www.oakville.ca

Birchtree Trail - Woodland ID 118

Forest Compartments Containing Ash
Level of impact to public due to EAB - MEDIUM

1:1,500



OAKVILLE

Corporation of the Town of Oakville
1225 Trafalgar Road
Oakville, ON L6H 0H3
Tel. 905-845-6601
www.oakville.ca

Dorval Trail / Old Abbey Park - Woodland ID 120

Forest Compartments Containing Ash
Level of impact to public due to EAB - MEDIUM

1:3,228



OAKVILLE

Corporation of the Town of Oakville
1225 Trafalgar Road
Oakville, ON L6H 0H3
Tel. 905-845-6601
www.oakville.ca

Indian Ridge Trail - Woodland ID 130

Forest Compartments Containing Ash
Level of impact to public due to EAB - MEDIUM



Legend (Map 2 of 2)

- Compartment Containing Ash
- Creek
- Trails

0 40 80 160 240 320 Meters



OAKVILLE

Corporation of the Town of Oakville
1225 Trafalgar Road
Oakville, ON L6H 0H3
Tel. 905-845-6601
www.oakville.ca

Indian Ridge Trail - Woodland ID 130

Forest Compartments Containing Ash
Level of impact to public due to EAB - MEDIUM



OAKVILLE

Corporation of the Town of Oakville
 1225 Trafalgar Road
 Oakville, ON L6H 0H3
 Tel. 905-845-6601
www.oakville.ca

Brookstar Pond - Woodland ID 137

Forest Compartments Containing Ash
 Level of impact to public due to EAB - LOW

1:1,000



OAKVILLE

Corporation of the Town of Oakville
1225 Trafalgar Road
Oakville, ON L6H 0H3
Tel. 905-845-6601
www.oakville.ca

Nautical Woods - Woodland ID 211

Forest Compartments Containing Ash

Level of impact to public due to EAB - HIGH

1:2,351



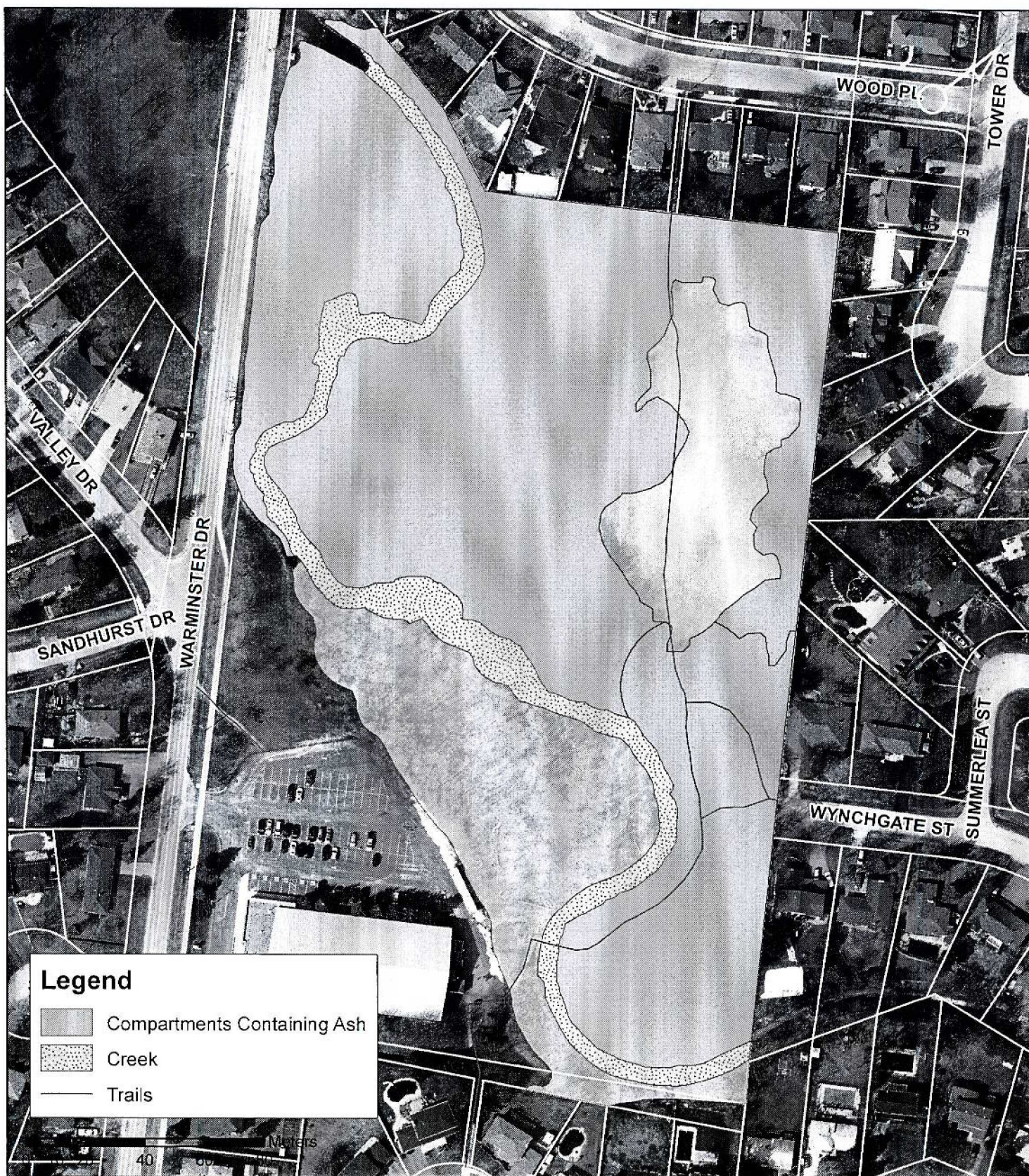
OAKVILLE

Corporation of the Town of Oakville
1225 Trafalgar Road
Oakville, ON L6H 0H3
Tel. 905-845-6601
www.oakville.ca

Shell Park - Woodland ID 212

Forest Compartments Containing Ash
Level of impact to public due to EAB - HIGH

1:3,097



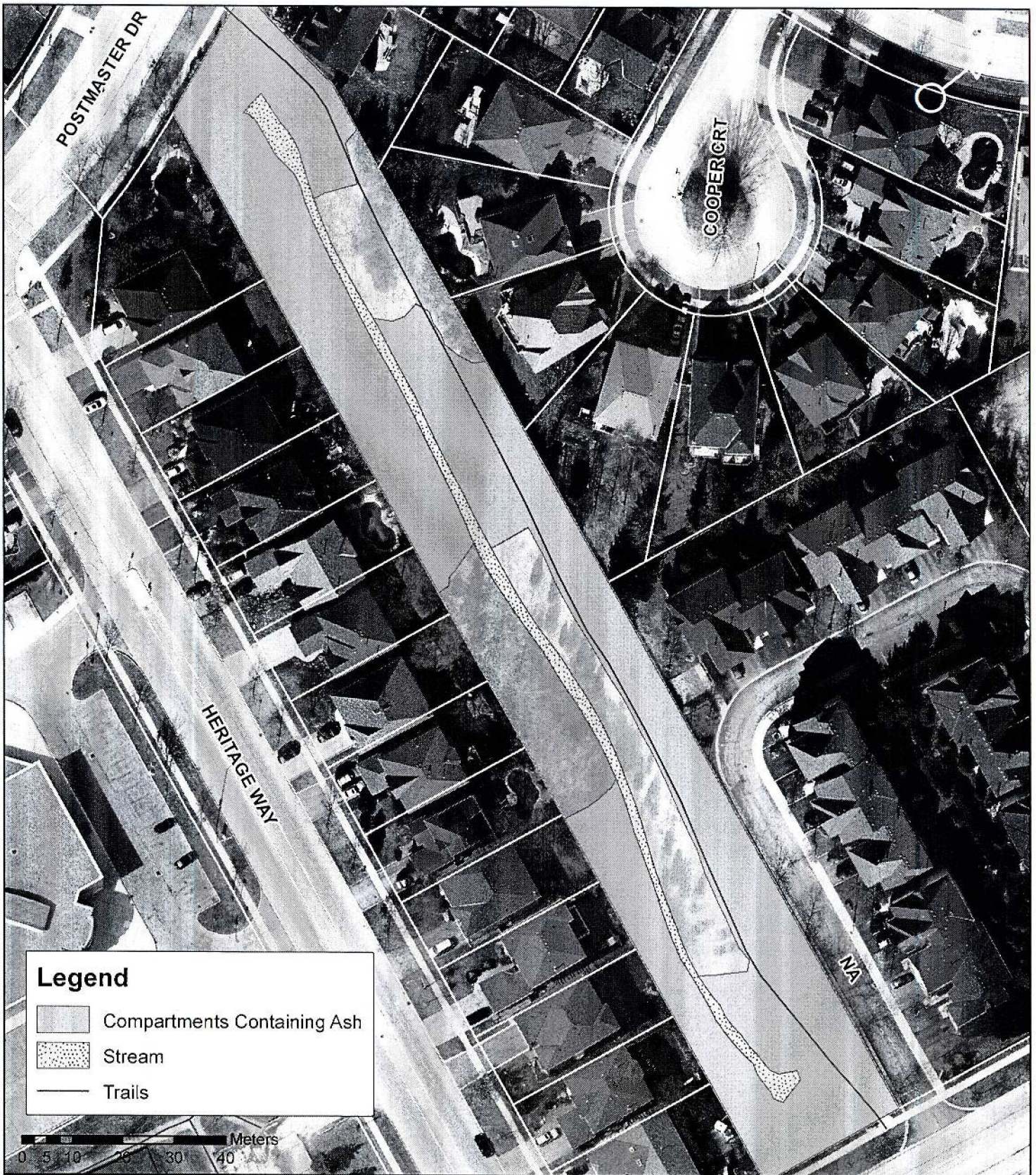
OAKVILLE

Corporation of the Town of Oakville
 1225 Trafalgar Road
 Oakville, ON L6H 0H3
 Tel. 905-845-6601
www.oakville.ca

Brook Valley Park - Woodland ID 221

Forest Compartments Containing Ash
 Level of impact to public due to EAB - MEDIUM

1:1,700



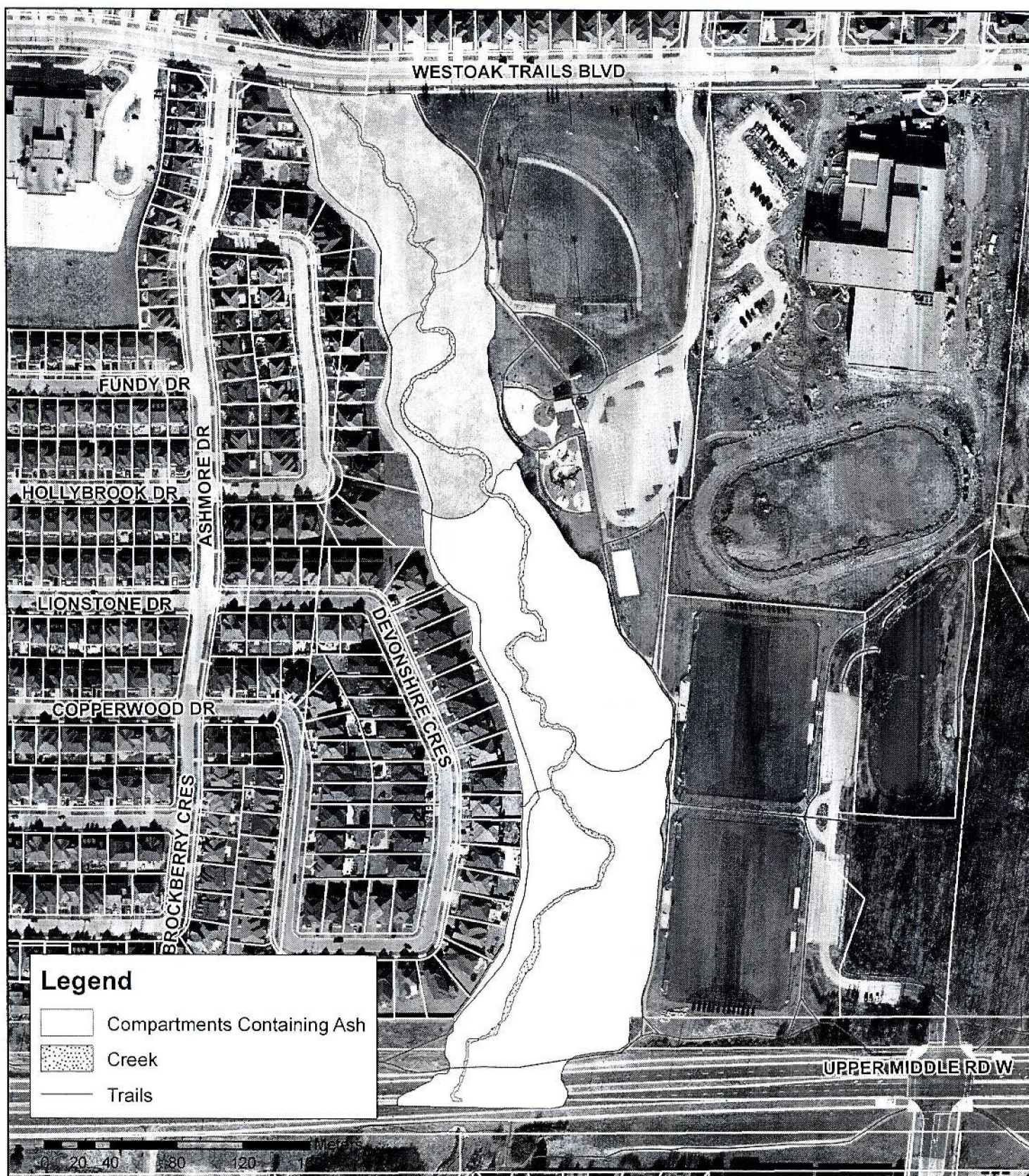
OAKVILLE

Corporation of the Town of Oakville
 1225 Trafalgar Road
 Oakville, ON L6H 0H3
 Tel. 905-845-6601
www.oakville.ca

Merchants Trail 2 - Woodland ID 246

Forest Compartments Containing Ash
 Level of impact to public due to EAB - MEDIUM

1:1,000



OAKVILLE

Corporation of the Town of Oakville
 1225 Trafalgar Road
 Oakville, ON L6H 0H3
 Tel. 905-845-6601
www.oakville.ca

East Fourteen Mile Creek Trail - Woodland ID 254

Forest Compartments Containing Ash
 Level of impact to public due to EAB - LOW

1:3,070



OAKVILLE

Corporation of the Town of Oakville
 1225 Trafalgar Road
 Oakville, ON L6H 0H3
 Tel. 905-845-6601
www.oakville.ca

East Fourteen Mile Creek - Woodland ID 259

Forest Compartments Containing Ash
 Level of impact to public due to EAB - LOW

1:2,600



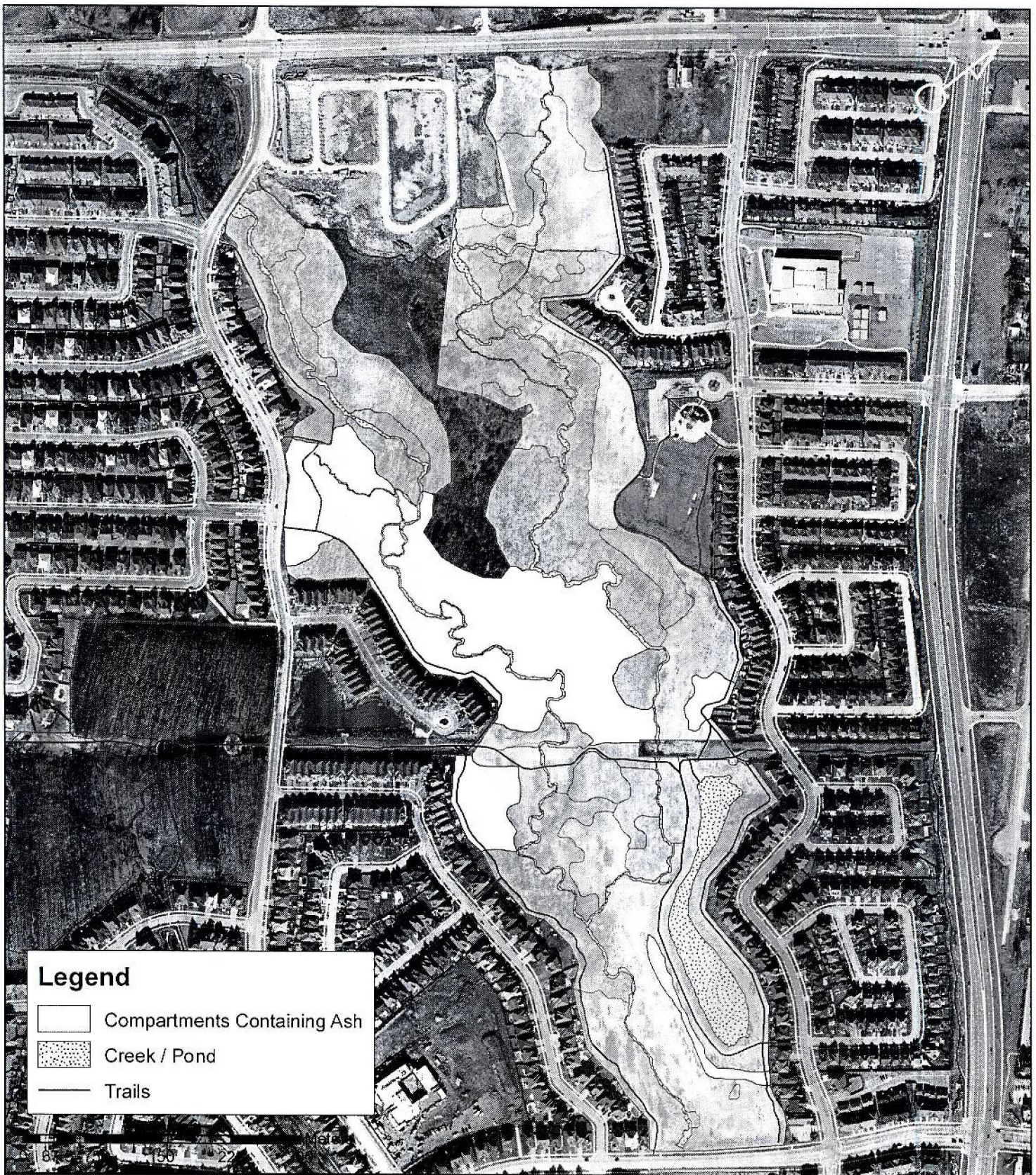
OAKVILLE

Corporation of the Town of Oakville
 1225 Trafalgar Road
 Oakville, ON L6H 0H3
 Tel. 905-845-6601
www.oakville.ca




Arborview Trail - Woodland ID 263

Forest Compartments Containing Ash
 Level of impact to public due to EAB - LOW

1:1,600



Legend

-  Compartments Containing Ash
-  Creek / Pond
-  Trails



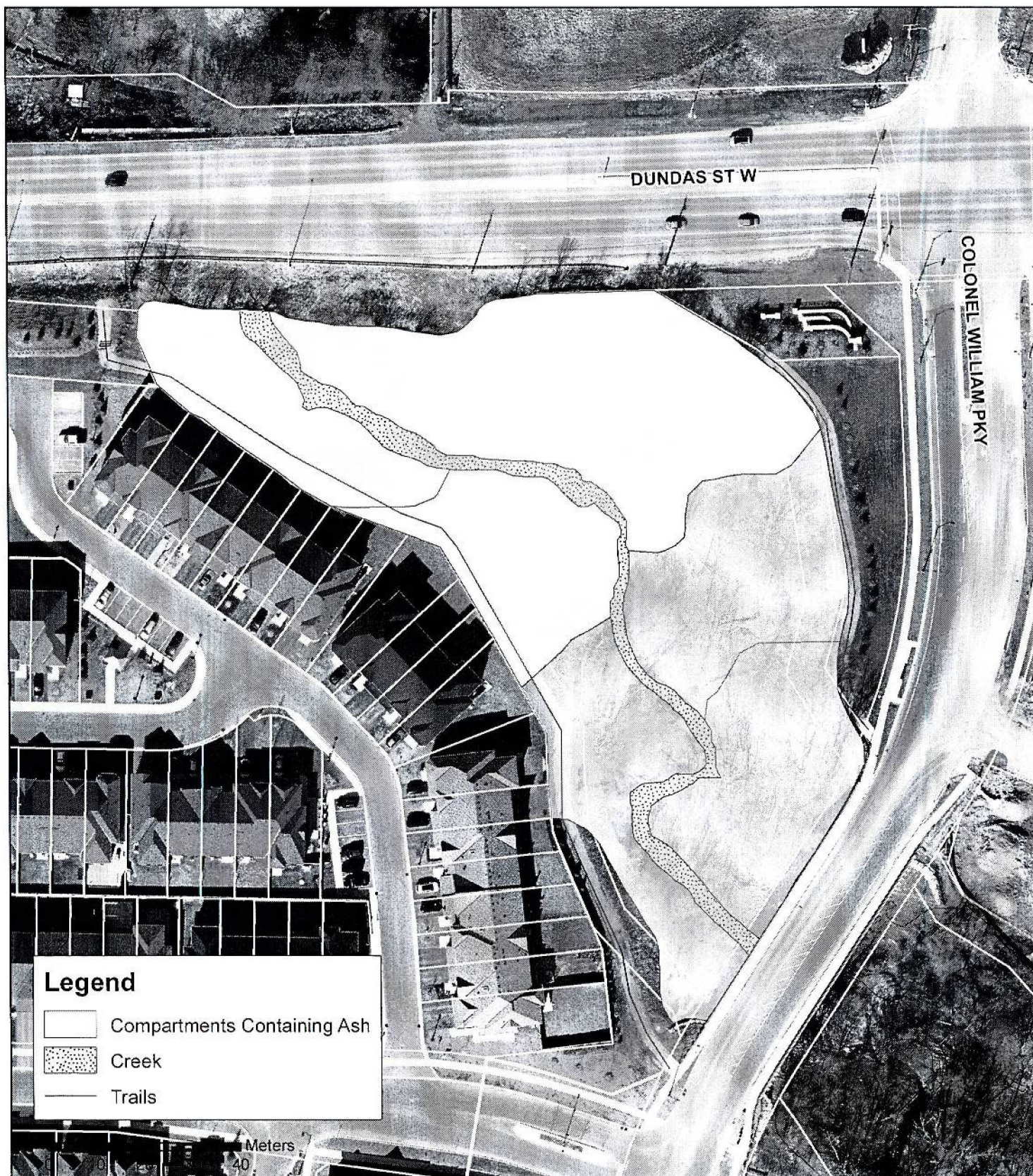
OAKVILLE

Corporation of the Town of Oakville
1225 Trafalgar Road
Oakville, ON L6H 0H3
Tel. 905-845-6601
www.oakville.ca

Valley Ridge Pond - Woodland ID 270

Forest Compartments Containing Ash
Level of impact to public due to EAB - LOW

1:5,500



OAKVILLE

Corporation of the Town of Oakville
1225 Trafalgar Road
Oakville, ON L6H 0H3
Tel. 905-845-6601
www.oakville.ca

Fourteen Mile Creek Trail 2 - Woodland ID 275

Forest Compartments Containing Ash
Level of impact to public due to EAB - LOW

1:1,057



OAKVILLE

Corporation of the Town of Oakville
 1225 Trafalgar Road
 Oakville, ON L6H 0H3
 Tel. 905-845-6601
 www.oakville.ca

Woodland - Unnamed - Woodland ID 282

Forest Compartments Containing Ash
 Level of impact to public due to EAB - LOW

1:974