

Appendix B – Indicator Tables and Graphs

Greenspace and Biodiversity

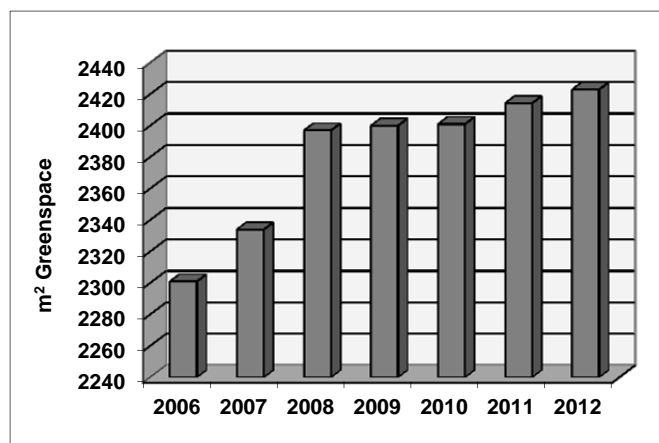


Figure 1 Publicly owned greenspace

Source: Town of Oakville, Conservation Halton, Province of Ontario

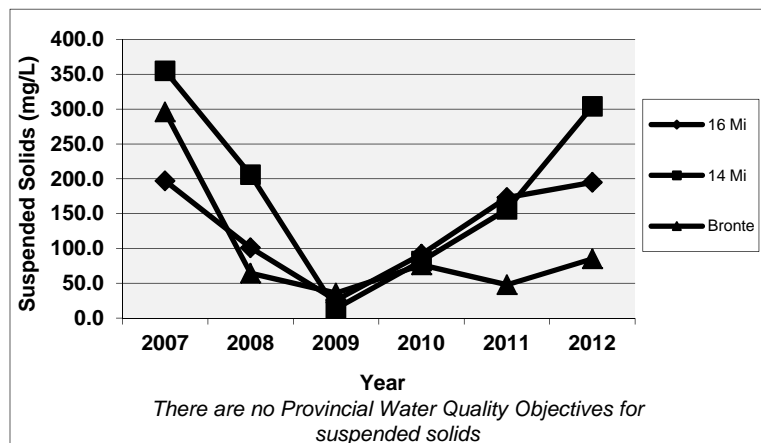


Figure 2 Total suspended solids in Oakville creeks

Source: Conservation Halton

Table 1 Green space in the Town of Oakville

Year	Town (ha)	Province (ha)	Conservation Halton (ha)	Total (ha)
2012	1,444	969	10	2,423
2011	1,435	969	10	2,414
2010	1,422	969	10	2,401
2009	1,421	969	10	2,400
2008	1,418	969	10	2,397
2007	1,355	969	10	2,334
2006	1,322	969	0	2,301

Note: Municipally owned greenspace includes community and neighbourhood parks, tableland woodlots, valleys, and undeveloped parkland. Provincial holdings include Glenorchy Conservation Area and Bronte Creek Provincial Park. Conservation Halton has Wildflower Woods.

Table 2 Trees planted by Oakville Forestry Staff

Year	Trees Planted
2012	1,773
2011	994
2010	1,497
2009	3,130
2008	1,898
2007	1,294

(Source: Town of Oakville)

Air Quality

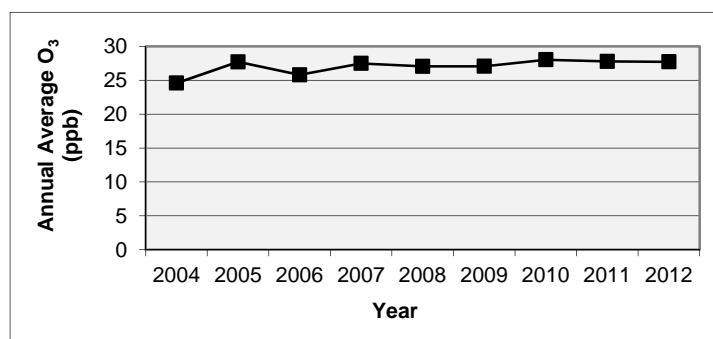


Figure 3 Annual average ground level ozone in Oakville

Source: Ministry of the Environment

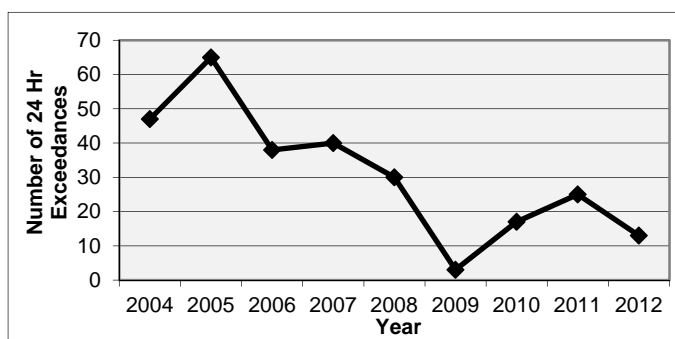


Figure 4 Annual 24 hour exceedance above 15µg/m³ of PM_{2.5}

Source: Ministry of the Environment

Water Quality

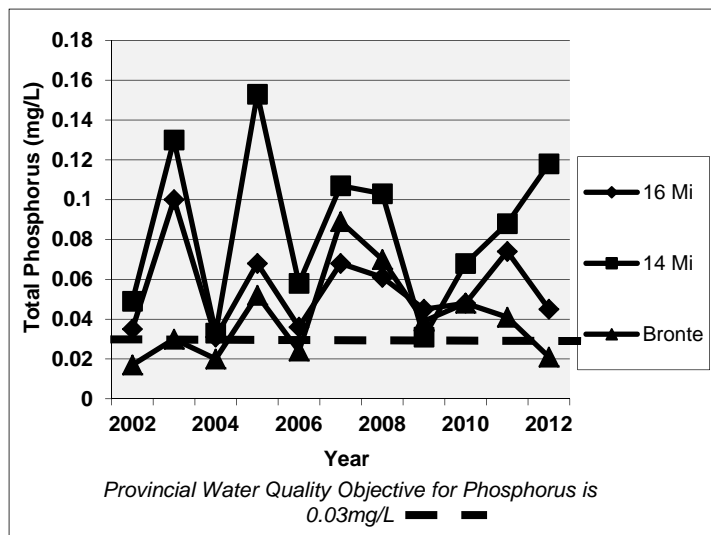


Figure 5 Mean phosphorus levels in Oakville creeks
Source: Conservation Halton

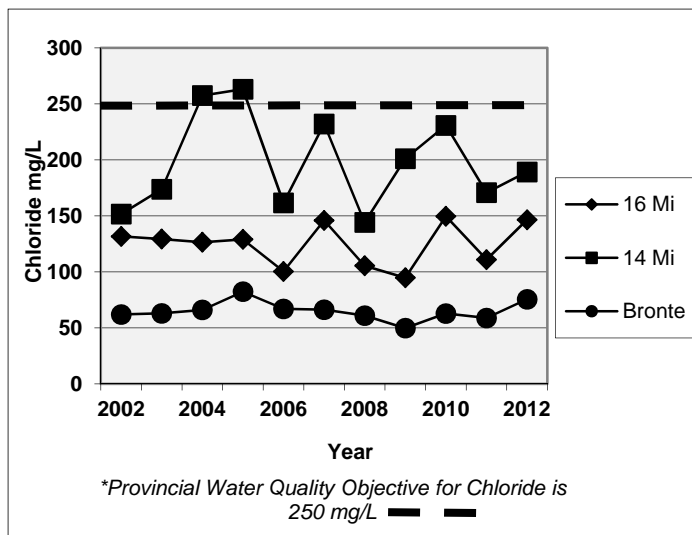


Figure 6 Mean chloride levels in Oakville creeks
Source: Conservation Halton

Climate Change

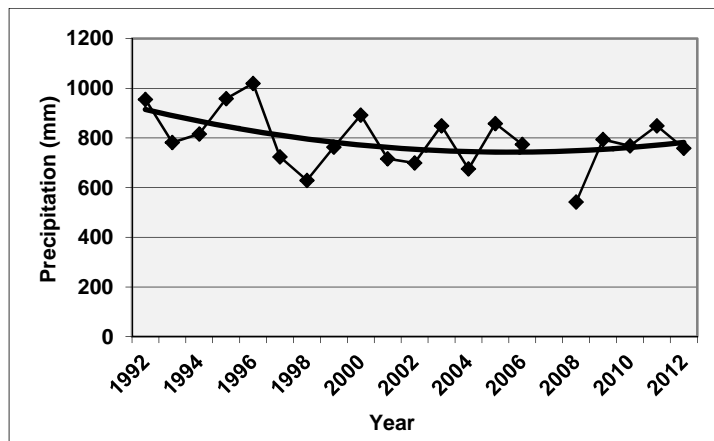


Figure 7 Oakville's annual precipitation
Source: Environment Canada

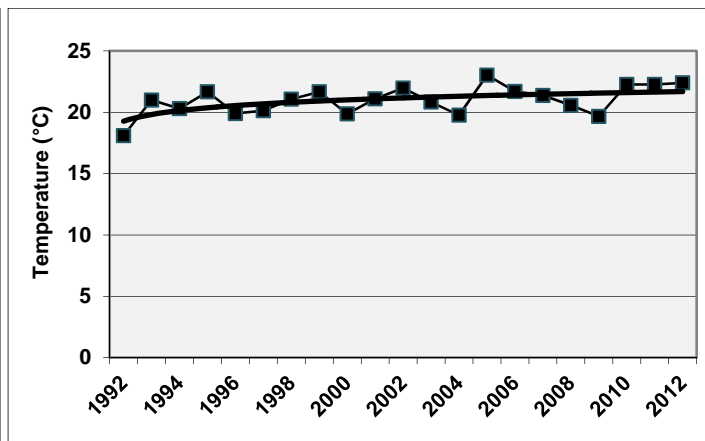


Figure 8 Oakville's average summer temperature
Source: Environment Canada

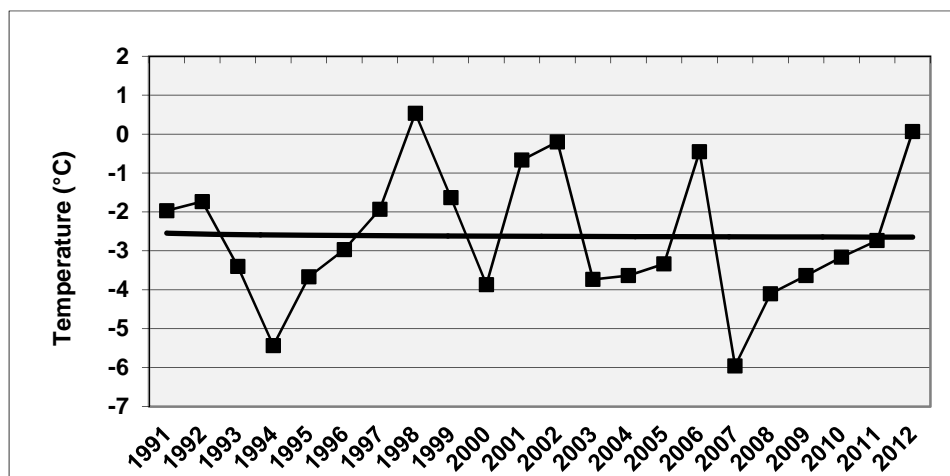


Figure 9 Oakville's average winter temperature
Source: Environment Canada

Energy Conservation

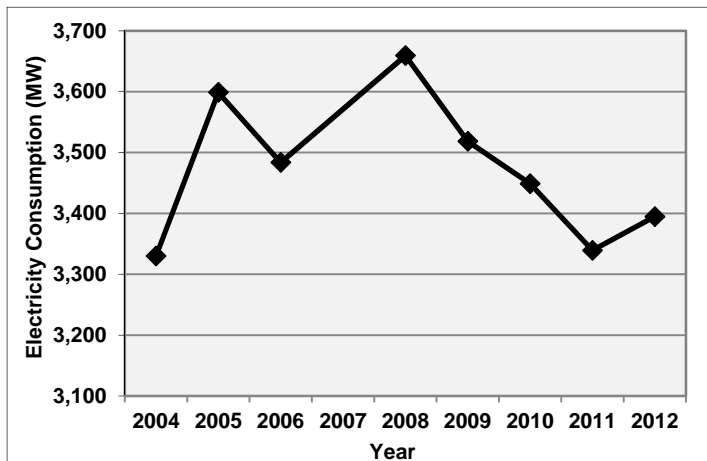


Figure 10 Per capita electricity consumption

Source: Oakville Hydro

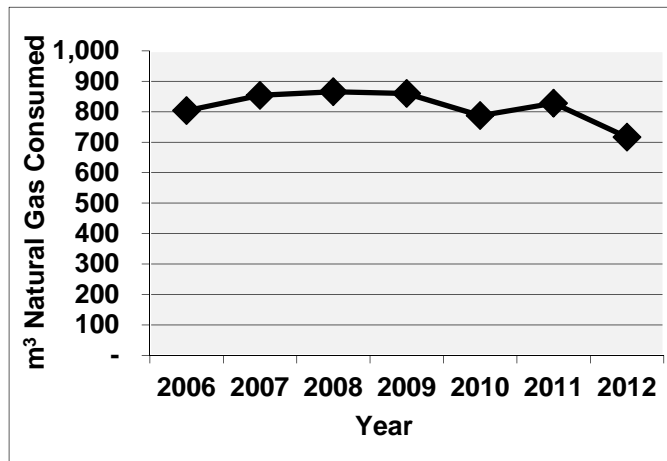


Figure 11 Residential per capita natural gas consumption

Source: Union Gas

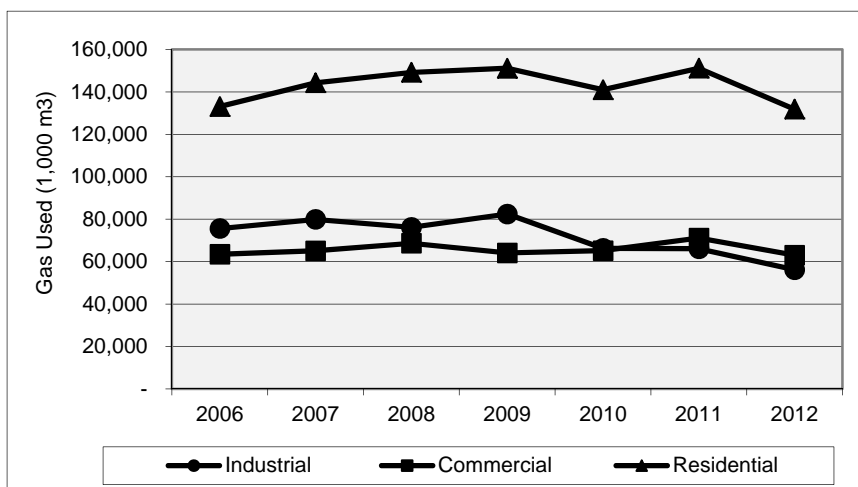


Figure 12 Natural gas consumption by sector

Source: Oakville Hydro

Solid Waste

Table 3 Oakville waste to landfill and diverted (Tonnes) (Source: Halton Region)

Year	Landfill (T)	Diverted (T)	Total (T)
2012	27,882	36,281	64,163
2011	27,717	36,062	63,779
2010	28,402	36,843	65,245
2009	36,076	27,907	63,983
2008	29,317	34,540	63,857
2007	39,352	22,456	61,808
2006	40,635	24,301	64,937

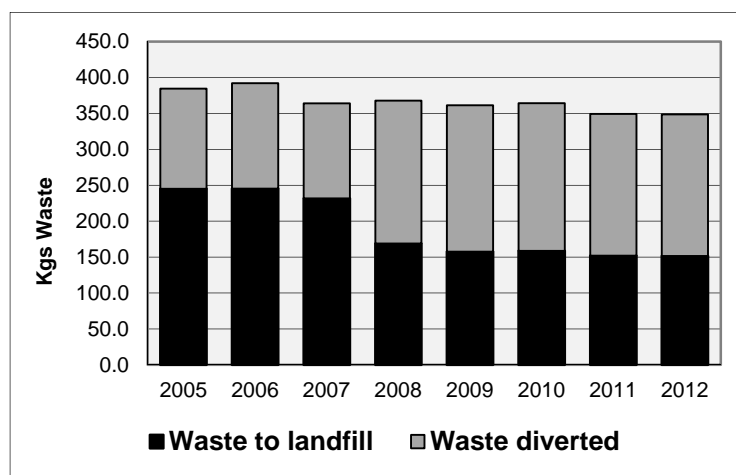


Figure 13 Residential per capita waste and recycling

Source: Halton Region

Water Conservation

Table 4 Oakville residential water consumption (Millions of Litres)

(Source: Halton Region)

Year	Millions of Litres	Year	Millions of Litres
2012	160.0	2008	149.3
2011	Data not available	2007	165.2
2010	151.5	2006	151.7
2009	150.3	2005	163.3

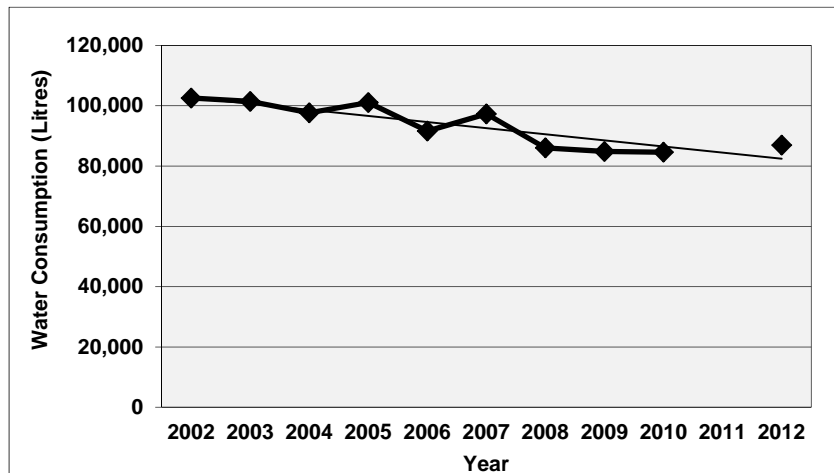


Figure 14 Residential water consumption per capita

Source: Halton Region

Disclaimer: Figure 14 uses water data from Halton Region and is converted to per capita data using population estimates from the town of Oakville. Due to the calculation using estimates, this data may not be accurate and is meant to provide a trend analysis only.

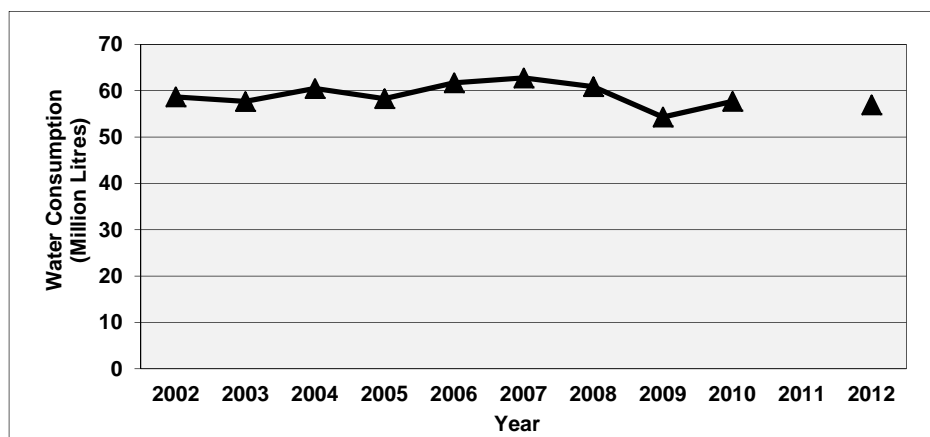


Figure 15

Industrial/Commercial/Institutional water consumption

Source: Halton Region

Transit

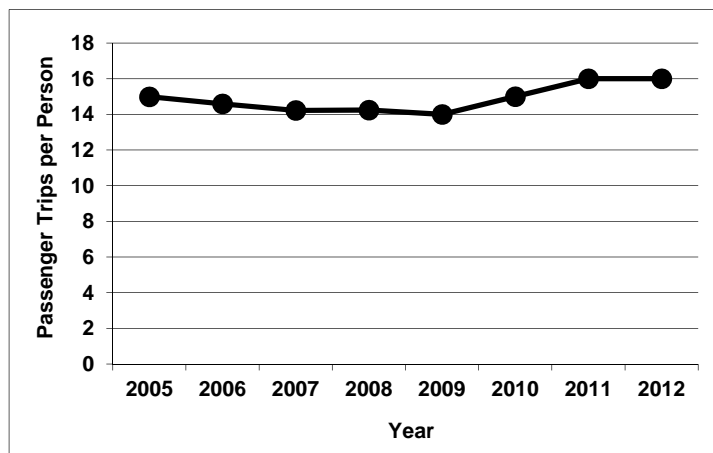


Figure 16 Oakville Transit passenger trips per capita

Source: Town of Oakville

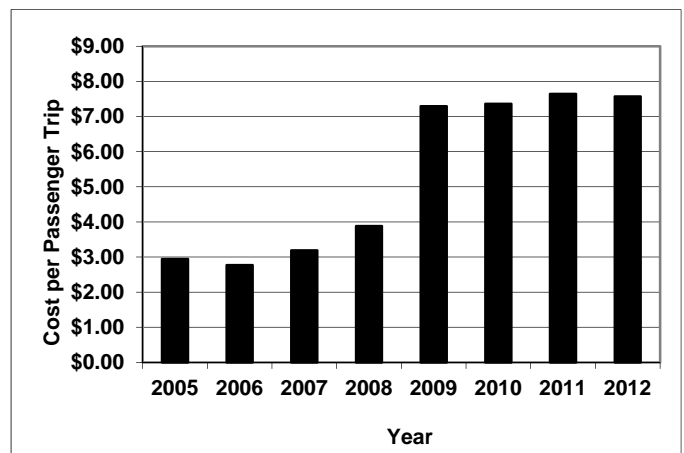


Figure 17 Oakville Transit net cost per passenger trip

Source: Town of Oakville

Transportation Choices

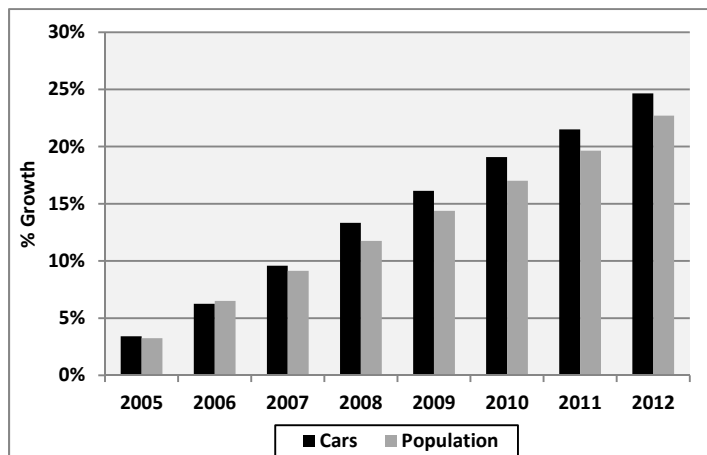


Figure 18 Population growth vs vehicle ownership in Halton

Source: Ontario Ministry of Transportation

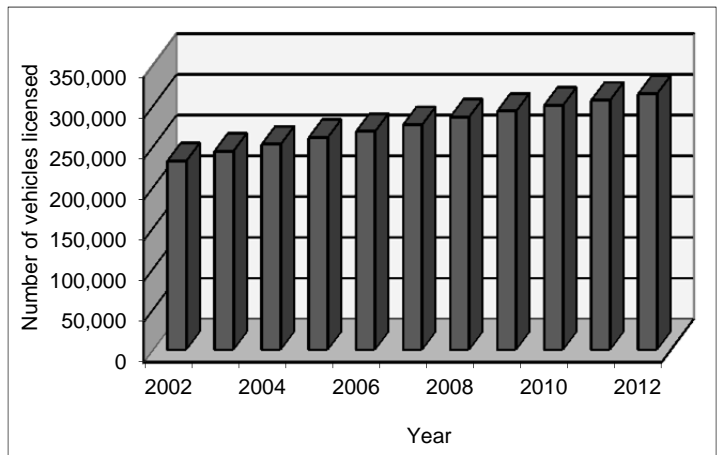


Figure 19 Personal vehicle registration in Halton

Source: Ontario Ministry of Transportation

Community Health & Green Space Access

Table 5 Oakville's "Adopt-a" programs (Source: Town of Oakville)

Adopt-a-Park		
Year	Area (ha)	Participants
2012	185.22	56
2011	208	49
2010	212	46
2009	195.5	42
2008	187.7	46
Adopt-a-Trail		
Year	Length (kms)	Participants
2012	88.44	110
2011	82	89
2010	71.57	83
2009	67.22	78
2008	75.8	83

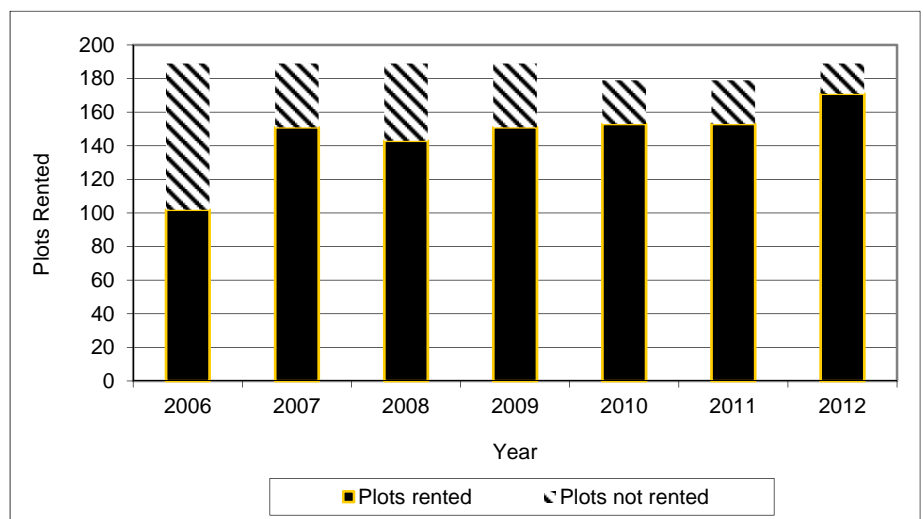


Figure 20 Community garden plot rentals in Oakville

Source: Town of Oakville and Ministry of Natural Resources

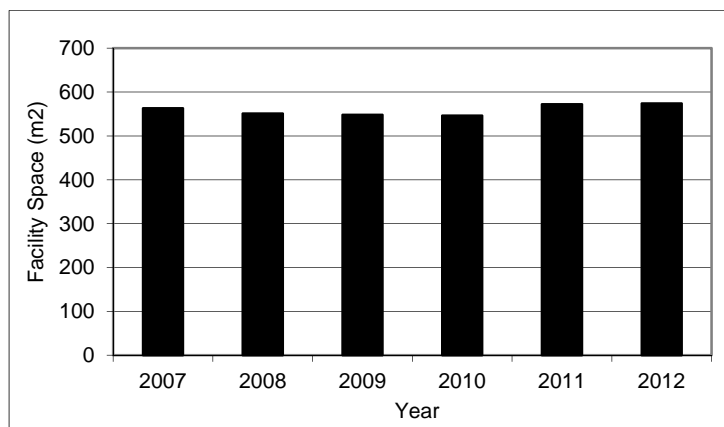


Figure 21 Outdoor recreational facility space per 1,000 people

Source: Town of Oakville

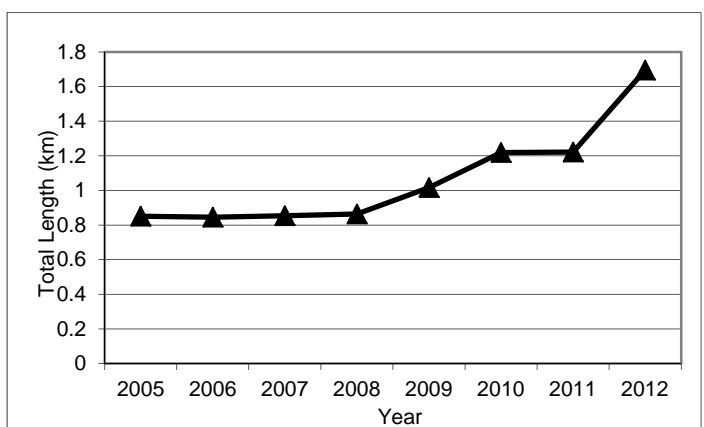


Figure 22 Total kms trails per 1,000 people

Source: Town of Oakville

Green Development

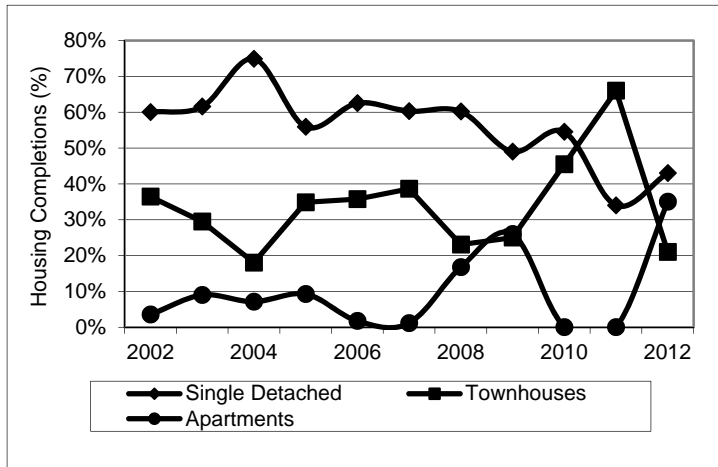


Figure 23 Oakville housing completions as % of annual total

Source: Canada Mortgage & Housing Corp.

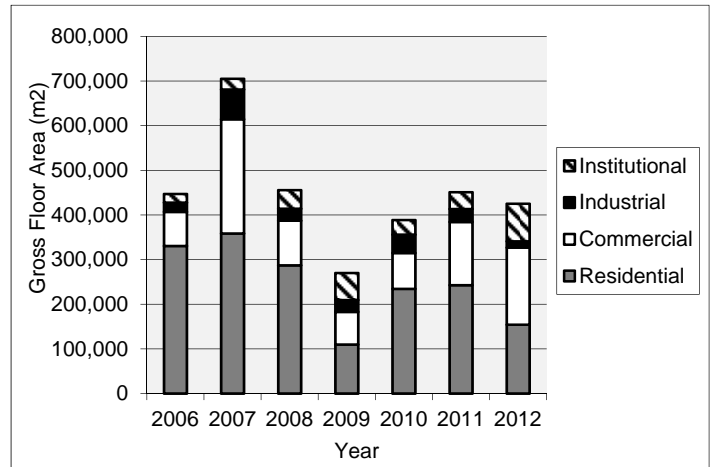


Figure 24 Oakville building permits issued

Source: Town of Oakville

Outreach and Education

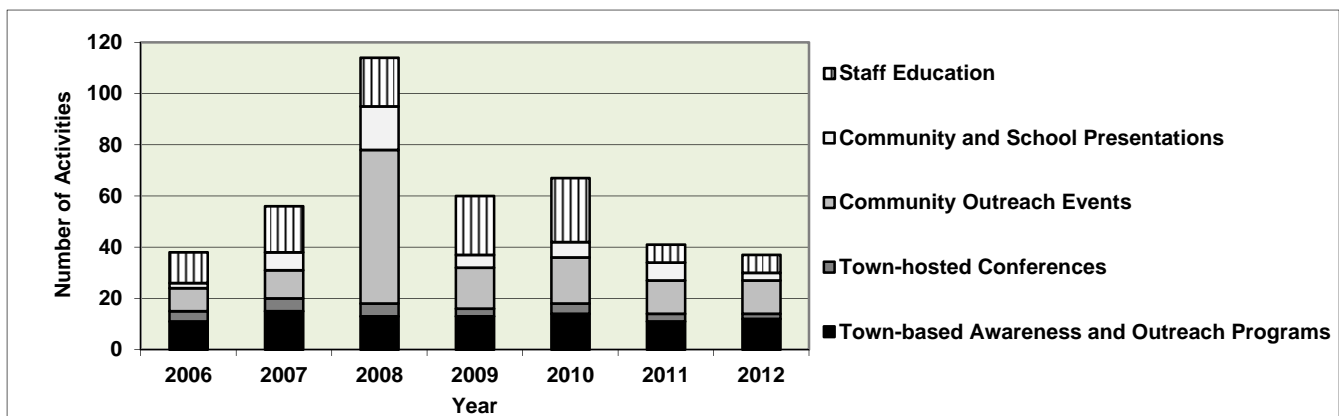


Figure 25 Environmental Policy department outreach

Source: Town of Oakville

EcoSchools

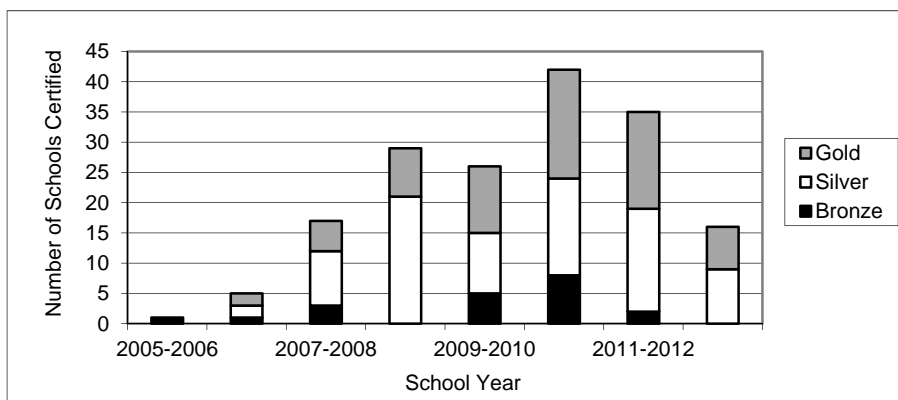


Figure 26 Oakville EcoSchools

Source: Halton District School Board and Halton Catholic District School Board

Towards Zero Waste

Table 6 Towards Zero Waste achievements *(Source: Town of Oakville)*

Since 2004, town staff have recycled 2000kg of batteries and over 400 cell phones through the Call2Recycle program. Additionally, to date in 2013, Oakville has sent 985 pounds of expired electronic materials to be recycled by OEM Corp.
Collected over 200 pounds of wine corks for the Jelinek Cork Group to recycle since 2008. In 2013, 10kg of corks were collected for children's March break art camps.
Collected 45 gallons of used anti-freeze from boat owners at the town's harbours hazardous waste collection site as part of the Clean Marine program.
In 2013, 1368 lamps were recycled, producing a total of 337.7kg of glass, 4.35kg of metals, 4.6 kg of phosphor and 0.076kg of mercury.

Sustainable Purchasing

Table 7 Green purchasing improvements *(Source: Town of Oakville)*

Existing product	Green replacement
Forest Stewardship Council (FSC) certified paper 100% virgin paper	FSC with minimum 30% recycled content. On a smaller scale, Environmental Policy is piloting the use of paper with 100% postconsumer (PC) content, chlorine free, produced with green energy for specific environmental publications.
Bottled water	Water bars (3) for use at town events to support delivery of municipal tap water to the public and at special events. As well, bottled water has been removed from vending machines where municipal tap water is available to reduce the amount of plastic entering the waste stream.
Paper towels	Seven harbour washrooms were equipped with hand dryers since composting is not available for paper towel collection at these locations.
Paint	Incorporate the use of recycled paints.

Environmental Strategic Plan

Table 8 Environmental Strategic Plan implementation *(Source: Town of Oakville)*

Action	Implementation rate
Ongoing (OG) actions are existing programs and/or policies that will be continuing (total of 63)	100%
Short Term (ST) actions are recommended for completion by 2014 (total of 28 actions)	61%
Medium Term (MT) actions are recommended for completion by 2013-2016 (total of 22 actions)	32%
Long Term (LT) actions are recommended for completion beyond 2016 (total of 9 actions)	50%