

TOUR 1

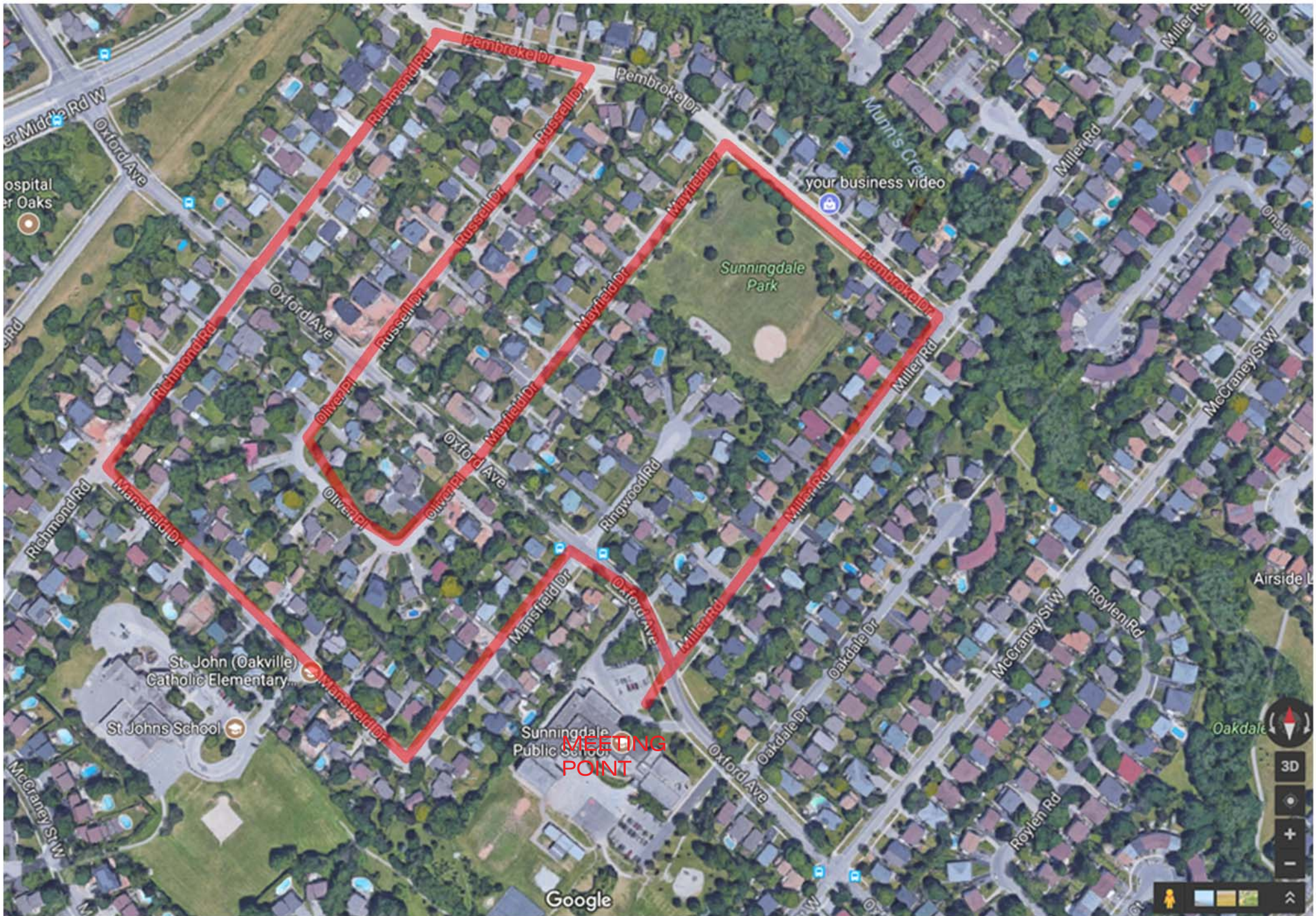


APPENDIX A

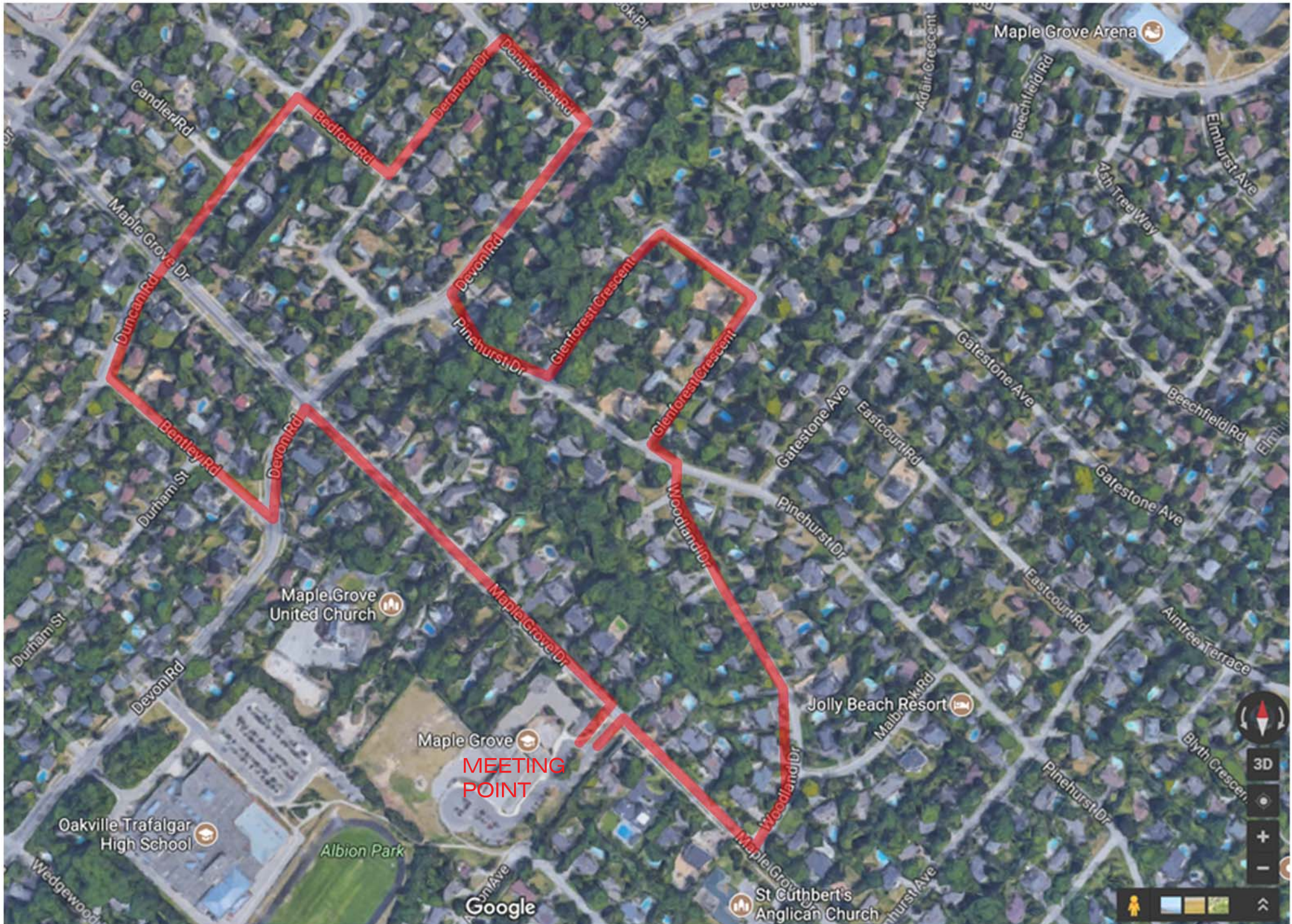
TOUR 2



TOUR 3



TOUR 4



RESIDENTIAL CHARACTER STUDY – Walking Tours

Why a walking tour?

- To talk about what residential character means
- To discuss and share observations about our surroundings as we walk
- To learn more about how you perceive character and what is important to you

What is residential character?

Livable Oakville defines *character* as “the collective qualities and characteristics that distinguish a particular area or neighbourhood”.

Residential character is created by a combination of public and private elements and qualities, including but not limited to:

Public Realm	Private Realm
Street trees	Landscaping
Road pattern	Trees
Road profile	Building height
Sidewalks	Front yards
Infrastructure (e.g. power lines)	Distance between buildings
	Fences
	Garages

In essence, it’s the ‘look and feel’ of your neighbourhood.

Why are we undertaking a Residential Character Study?

Staff want to understand, with community input, the existing character of the town’s residential areas and identify which elements and/or qualities residents feel contribute to the character of their neighbourhood.

A better understanding of the existing character may support improvements to policy, urban design direction, zoning and other processes.