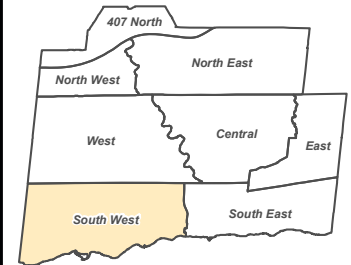


SCHEDULE F SOUTH WEST LAND USE



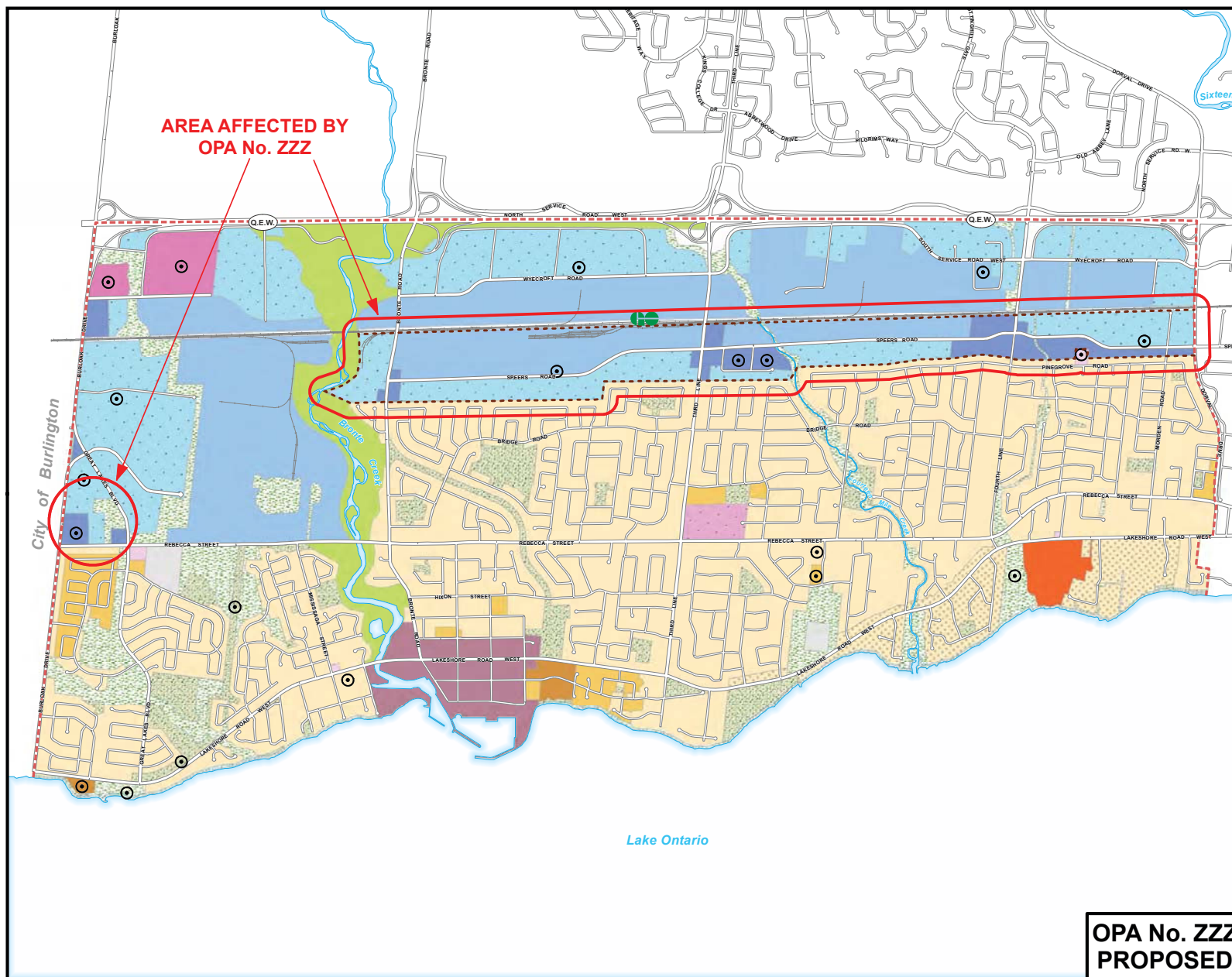
- SCHEDULE AREA BOUNDARY
- LOW DENSITY RESIDENTIAL
- MEDIUM DENSITY RESIDENTIAL
- HIGH DENSITY RESIDENTIAL
- NEIGHBOURHOOD COMMERCIAL
- CORE COMMERCIAL
- OFFICE EMPLOYMENT
- BUSINESS EMPLOYMENT
- INDUSTRIAL
- BUSINESS COMMERCIAL
- INSTITUTIONAL
- NATURAL AREA
- PARKWAY BELT
- PARKS AND OPEN SPACE
- WATERFRONT OPEN SPACE
- UTILITY
- GROWTH AREA*
- SPECIAL POLICY AREA
- RAILWAY
- ➡ MAJOR TRANSIT STATION

* Refer to Part E, Growth Area Policies
 ⦿ Refer to Part E, Exceptions

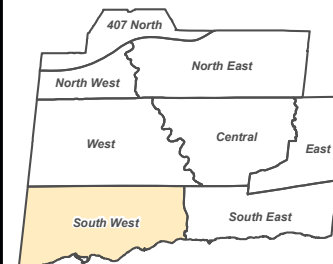


1:25,000
 April 4, 2017

S:\DEPARTMENT\PLANNING\OPRA\LINKABLE_OAKVILLE2017\OPA_ZZZ\SCHEDULE F_OPA_ZZZ_EXISTING.mxd



SCHEDULE F SOUTH WEST LAND USE



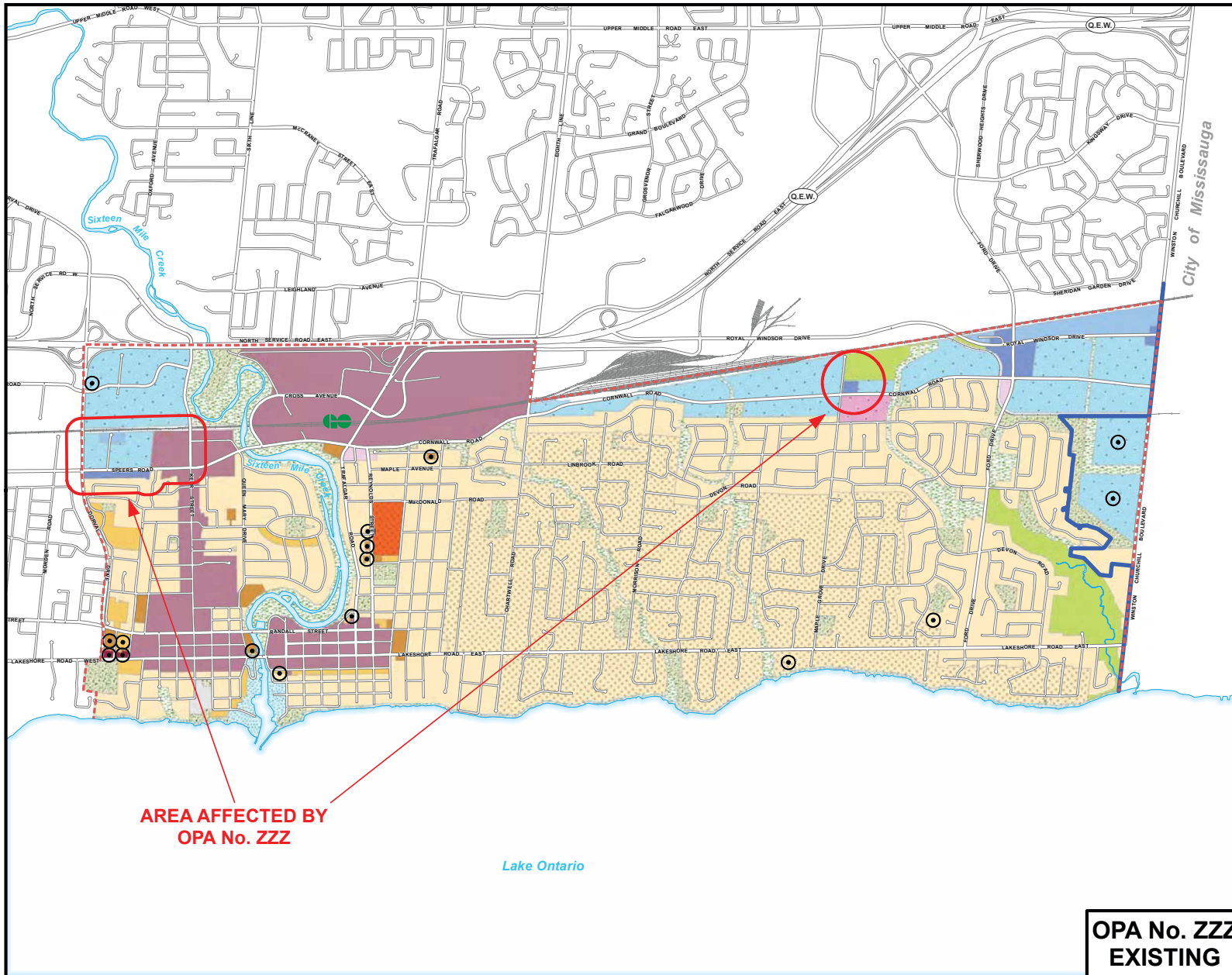
- SCHEDULE AREA BOUNDARY
- LOW DENSITY RESIDENTIAL
- MEDIUM DENSITY RESIDENTIAL
- HIGH DENSITY RESIDENTIAL
- NEIGHBOURHOOD COMMERCIAL
- COMMUNITY COMMERCIAL
- CORE COMMERCIAL
- BUSINESS EMPLOYMENT
- INDUSTRIAL
- BUSINESS COMMERCIAL
- INSTITUTIONAL
- NATURAL AREA
- PARKWAY BELT
- PARKS AND OPEN SPACE
- WATERFRONT OPEN SPACE
- UTILITY
- GROWTH AREA*
- SPECIAL POLICY AREA
- SPEERS ROAD CORRIDOR STUDY AREA
- RAILWAY
- + MAJOR TRANSIT STATION

* Refer to Part E, Growth Area Policies
 ○ Refer to Part E, Exceptions



1:25,000
 June 2, 2017

S:\DEPARTMENT\PLANNING\OPAL\LINKABLE_OAKVILLE\2017\OPA_ZZZ\
 SCHEDULE F_OPA_ZZZ_PROPOSED.mxd



SCHEDULE G SOUTH EAST LAND USE



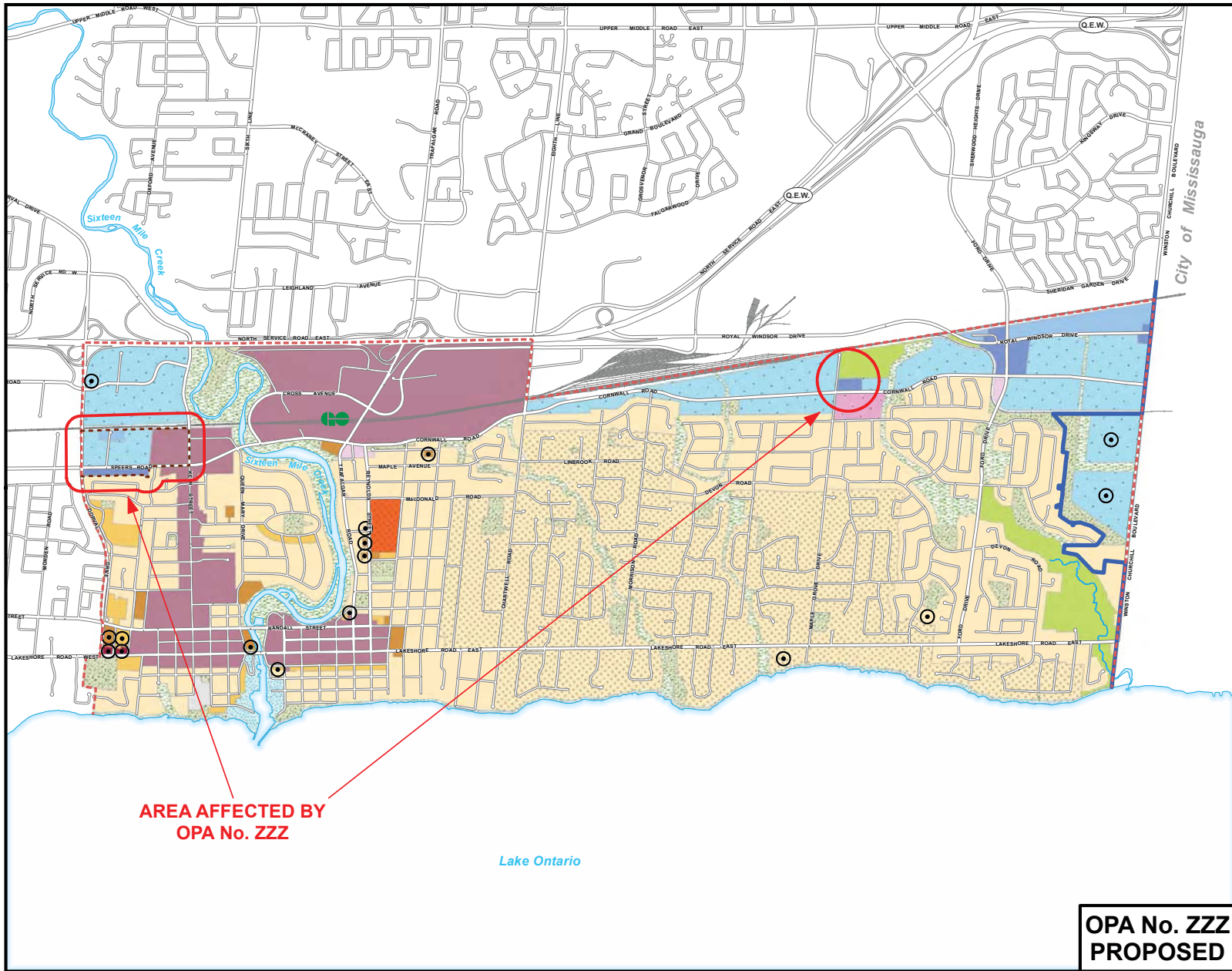
- BUILT BOUNDARY
- - - SCHEDULE AREA BOUNDARY
- LOW DENSITY RESIDENTIAL
- MEDIUM DENSITY RESIDENTIAL
- HIGH DENSITY RESIDENTIAL
- NEIGHBOURHOOD COMMERCIAL
- COMMUNITY COMMERCIAL
- CENTRAL BUSINESS DISTRICT
- OFFICE EMPLOYMENT
- BUSINESS EMPLOYMENT
- INDUSTRIAL
- BUSINESS COMMERCIAL
- INSTITUTIONAL
- NATURAL AREA
- PARKWAY BELT
- PARKS AND OPEN SPACE
- PRIVATE OPEN SPACE
- WATERFRONT OPEN SPACE
- UTILITY
- GROWTH AREA *
- SPECIAL POLICY AREA
- RAILWAY

* Refer to Part E, Growth Area Policies
 ⊙ Refer to Part E, Exceptions



1:25,000
 April 4, 2017

S:\DEPT\PLANNING\OPAL\LIABLE_OAKVILLE\2017\OPA_ZZZ\
 SCHEDULE G_OPA_ZZZ_EXISTING.mxd



SCHEDULE G SOUTH EAST LAND USE



- BUILT BOUNDARY
- - - SCHEDULE AREA BOUNDARY
- LOW DENSITY RESIDENTIAL
- MEDIUM DENSITY RESIDENTIAL
- HIGH DENSITY RESIDENTIAL
- NEIGHBOURHOOD COMMERCIAL
- COMMUNITY COMMERCIAL
- CENTRAL BUSINESS DISTRICT
- OFFICE EMPLOYMENT
- BUSINESS EMPLOYMENT
- INDUSTRIAL
- BUSINESS COMMERCIAL
- INSTITUTIONAL
- NATURAL AREA
- PARKWAY BELT
- PARKS AND OPEN SPACE
- PRIVATE OPEN SPACE
- WATERFRONT OPEN SPACE
- UTILITY
- GROWTH AREA*
- SPECIAL POLICY AREA
- SPEERS ROAD CORRIDOR STUDY AREA
- RAILWAY

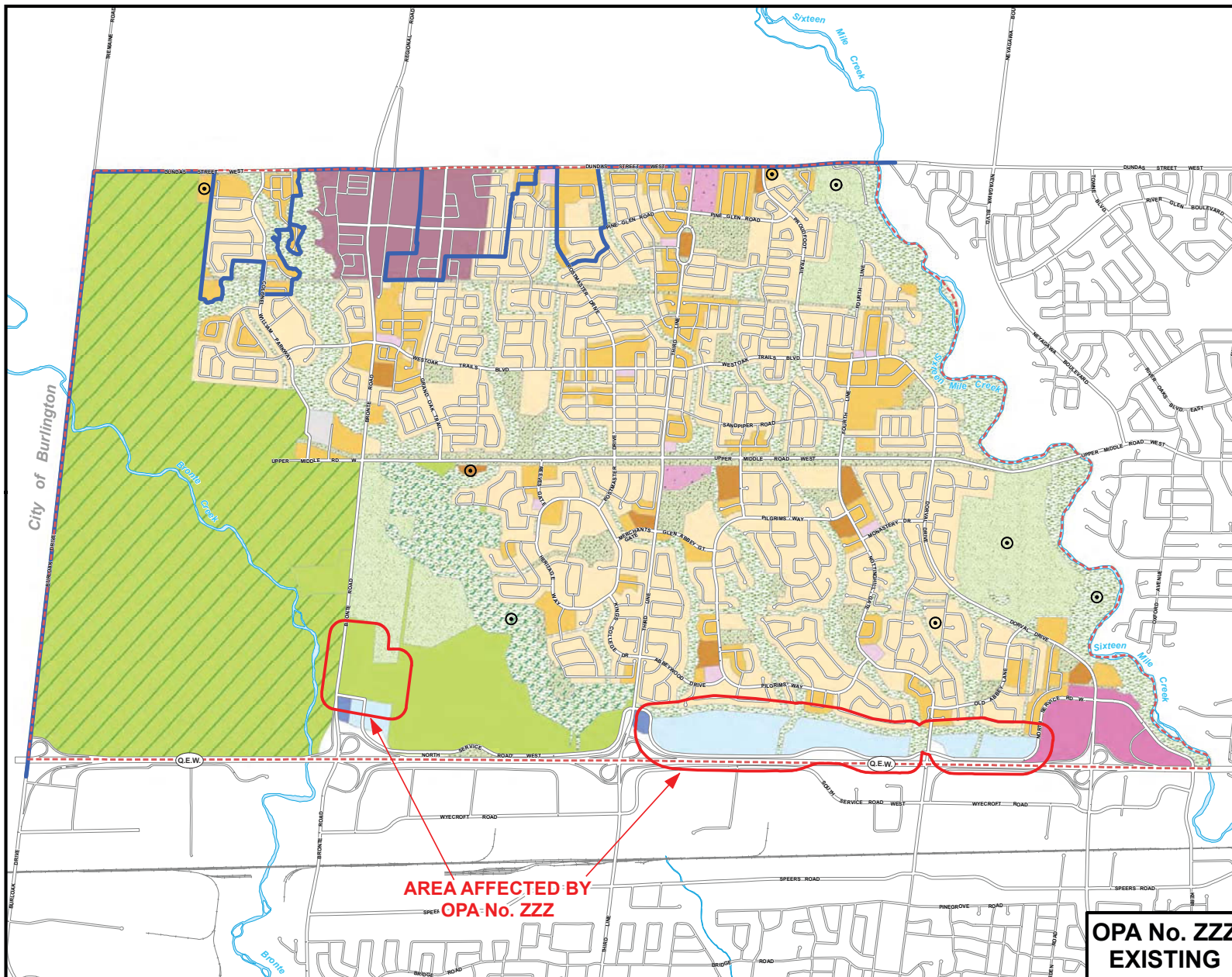
* Refer to Part E, Growth Area Policies

⊙ Refer to Part E, Exceptions

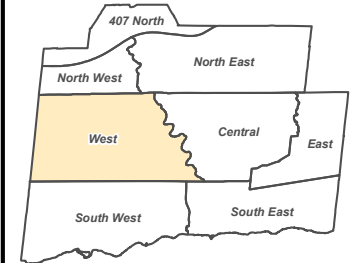


1:25,000
June 2, 2017

S:\DEPARTMENT\PLANNING\OPAL\LIABLE_OAKVILLE\2017\OPA_ZZZ\ SCHEDULE G_OPA_ZZZ_EXISTING.mxd



SCHEDULE H WEST LAND USE



- BUILT BOUNDARY
- - - SCHEDULE AREA BOUNDARY
- LOW DENSITY RESIDENTIAL
- MEDIUM DENSITY RESIDENTIAL
- HIGH DENSITY RESIDENTIAL
- NEIGHBOURHOOD COMMERCIAL
- COMMUNITY COMMERCIAL
- CORE COMMERCIAL
- OFFICE EMPLOYMENT
- BUSINESS COMMERCIAL
- NATURAL AREA
- PARKWAY BELT
- PARKWAY BELT - OVERLAY
- PARKS AND OPEN SPACE
- PRIVATE OPEN SPACE
- UTILITY
- GROWTH AREA *
- GREENBELT **
- RAILWAY

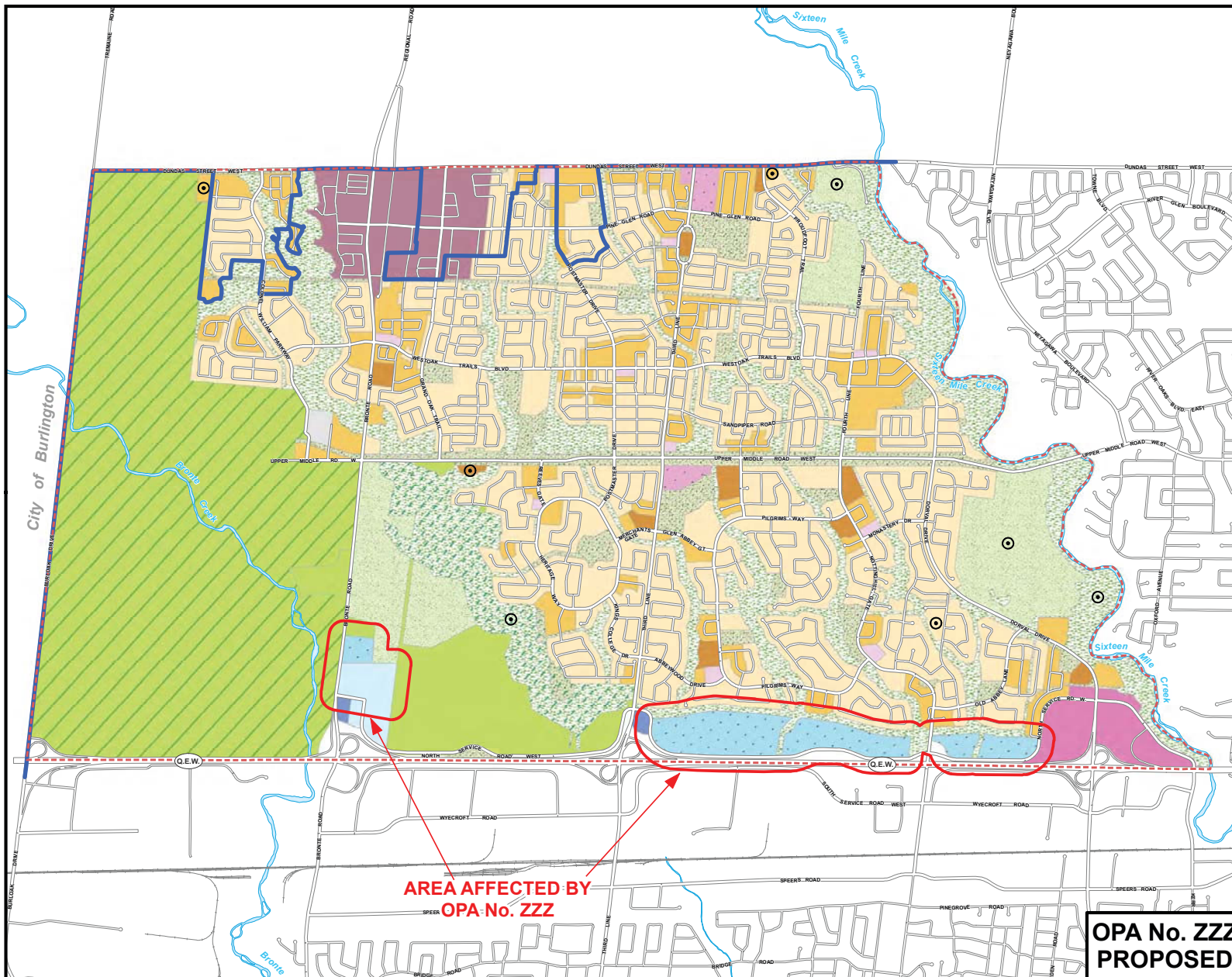
* Refer to Part E, Growth Area Policies
 ** Refer to Part E, Special Policy Areas
 ○ Refer to Part E, Exceptions



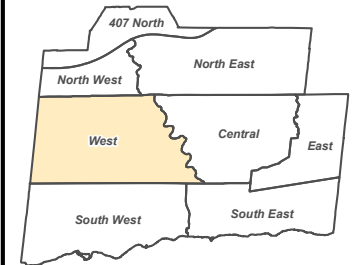
1:26,000

April 4, 2017

S:\DEPARTMENT\PLANNING\OPAL\LIBRARY_OPA\VILLE2017\OPA_ZZZ_1
 SCHEDULE H_OPA_ZZZ_EXISTING.mxd



SCHEDULE H WEST LAND USE



- BUILT BOUNDARY
- - - SCHEDULE AREA BOUNDARY
- LOW DENSITY RESIDENTIAL
- MEDIUM DENSITY RESIDENTIAL
- HIGH DENSITY RESIDENTIAL
- NEIGHBOURHOOD COMMERCIAL
- COMMUNITY COMMERCIAL
- CORE COMMERCIAL
- OFFICE EMPLOYMENT
- BUSINESS EMPLOYMENT
- BUSINESS COMMERCIAL
- NATURAL AREA
- PARKWAY BELT
- PARKWAY BELT - OVERLAY
- PARKS AND OPEN SPACE
- PRIVATE OPEN SPACE
- UTILITY
- GROWTH AREA*
- GREENBELT**
- RAILWAY

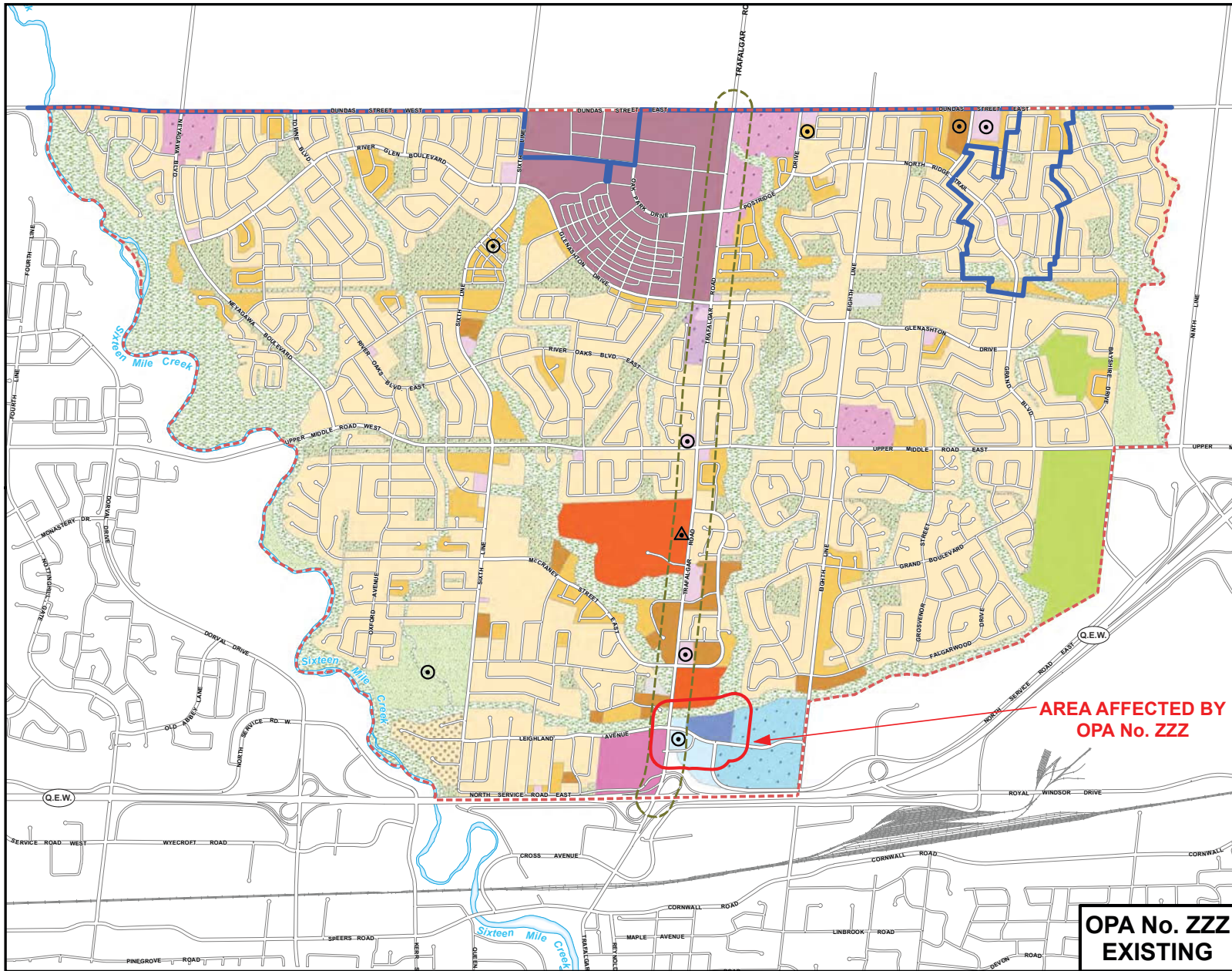
* Refer to Part E, Growth Area Policies
 ** Refer to Part E, Special Policy Areas
 ⊙ Refer to Part E, Exceptions



1:26,000
 June 2, 2017

**OPA No. ZZZ
 PROPOSED**

S:\DEPARTMENT\PLANNING\OPAL\LIBRARY_OAKVILLE\2017\OPA_ZZZ_SCHEDULE H_OPA_ZZZ_EXISTING.mxd



**OPA No. ZZZ
EXISTING**

SCHEDULE I CENTRAL LAND USE



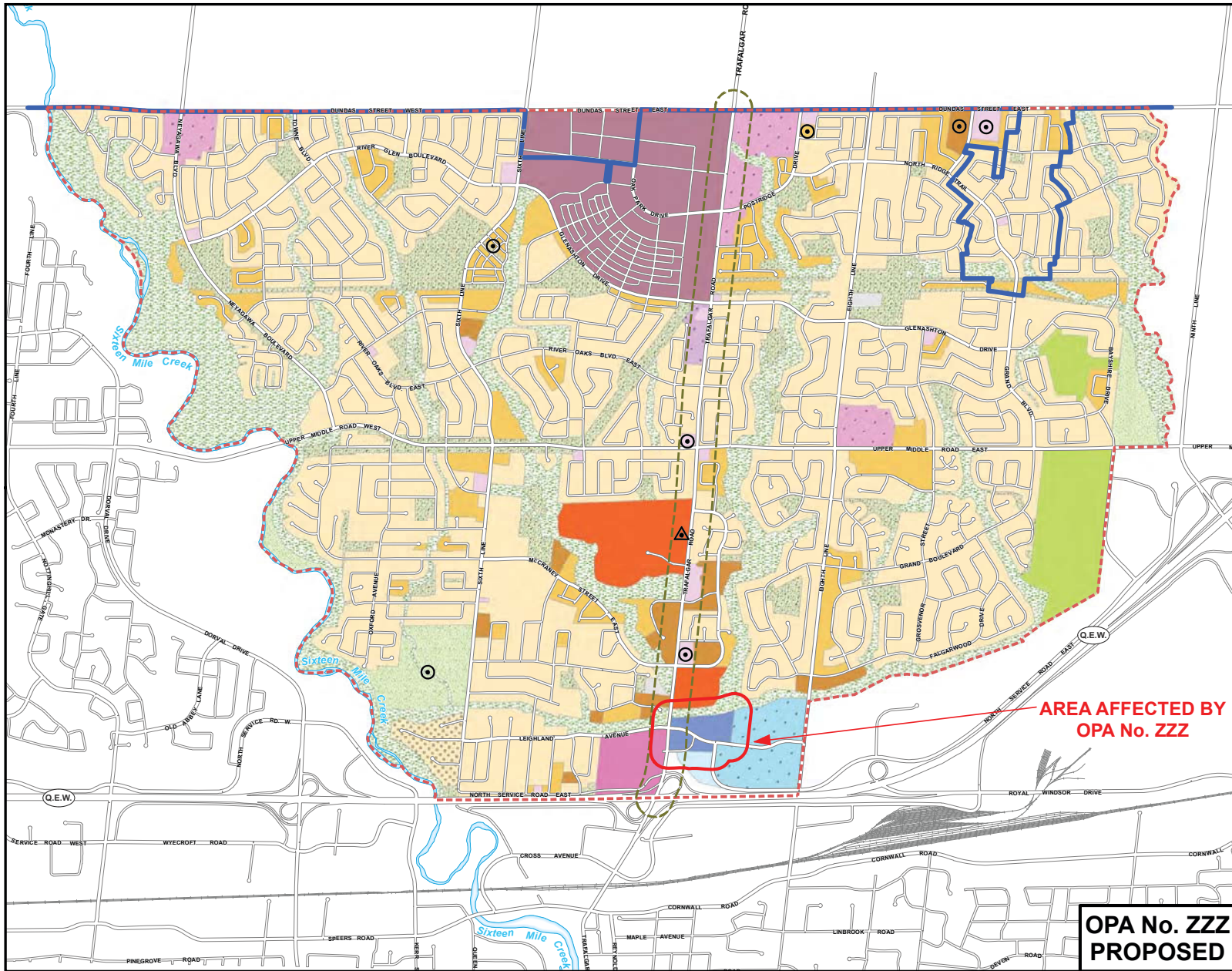
- BUILT BOUNDARY
- SCHEDULE AREA BOUNDARY
- LOW DENSITY RESIDENTIAL
- MEDIUM DENSITY RESIDENTIAL
- HIGH DENSITY RESIDENTIAL
- NEIGHBOURHOOD COMMERCIAL
- COMMUNITY COMMERCIAL
- CORE COMMERCIAL
- MAIN STREET 2
- OFFICE EMPLOYMENT
- BUSINESS EMPLOYMENT
- BUSINESS COMMERCIAL
- INSTITUTIONAL
- NATURAL AREA
- PARKWAY BELT
- PARKS AND OPEN SPACE
- PRIVATE OPEN SPACE
- UTILITY
- GROWTH AREA*
- SPECIAL POLICY AREA
- SPECIAL POLICY AREA - TRAFALGAR ROAD CORRIDOR
- RAILWAY

* Refer to Part E, Growth Area Policies
 Refer to Part E, Exceptions
 Refer to Part E, Trafalgar Road Corridor



1:22,500
 April 4, 2017

S:\DEPARTMENT\PLANNING\OPRA\LINABLE_OAKVILLE2017\OPA_ZZZ_SCHEDULE I_OPA_ZZZ_EXISTING.mxd



SCHEDULE I CENTRAL LAND USE



- BUILT BOUNDARY
- - - SCHEDULE AREA BOUNDARY
- LOW DENSITY RESIDENTIAL
- MEDIUM DENSITY RESIDENTIAL
- HIGH DENSITY RESIDENTIAL
- NEIGHBOURHOOD COMMERCIAL
- COMMUNITY COMMERCIAL
- CORE COMMERCIAL
- MAIN STREET 2
- OFFICE EMPLOYMENT
- BUSINESS EMPLOYMENT
- BUSINESS COMMERCIAL
- INSTITUTIONAL
- NATURAL AREA
- PARKWAY BELT
- PARKS AND OPEN SPACE
- PRIVATE OPEN SPACE
- UTILITY
- GROWTH AREA *
- SPECIAL POLICY AREA
- SPECIAL POLICY AREA - TRAFALGAR ROAD CORRIDOR
- RAILWAY

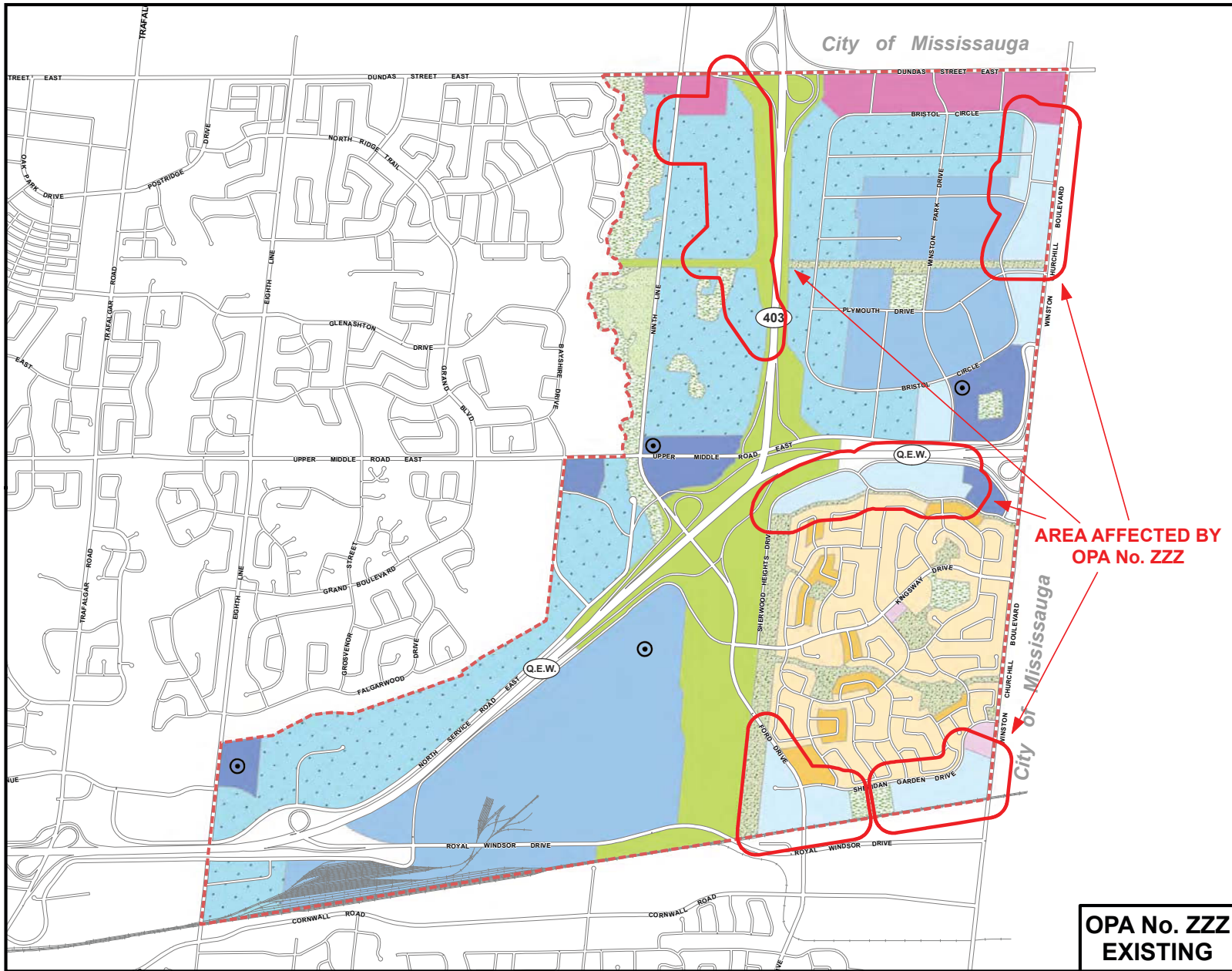
- * Refer to Part E, Growth Area Policies
- ⊙ Refer to Part E, Exceptions
- ▲ Refer to Part E, Trafalgar Road Corridor



1:22,500
June 2, 2017

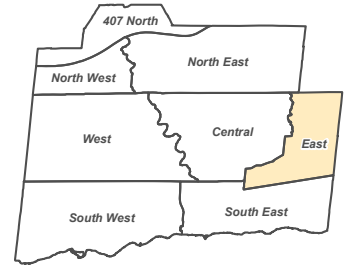
S:\DEPARTMENT\PLANNING\OPAL\Livable_Oakville2017\OPA_ZZZ_Schedule I_OPA_ZZZ_PROPOSED.mxd

**OPA No. ZZZ
PROPOSED**



**OPA No. ZZZ
EXISTING**

SCHEDULE J EAST LAND USE



- SCHEDULE AREA BOUNDARY
- LOW DENSITY RESIDENTIAL
- MEDIUM DENSITY RESIDENTIAL
- NEIGHBOURHOOD COMMERCIAL
- CORE COMMERCIAL
- OFFICE EMPLOYMENT
- BUSINESS EMPLOYMENT
- INDUSTRIAL
- BUSINESS COMMERCIAL
- NATURAL AREA
- PARKWAY BELT
- PARKS AND OPEN SPACE
- PRIVATE OPEN SPACE
- RAILWAY

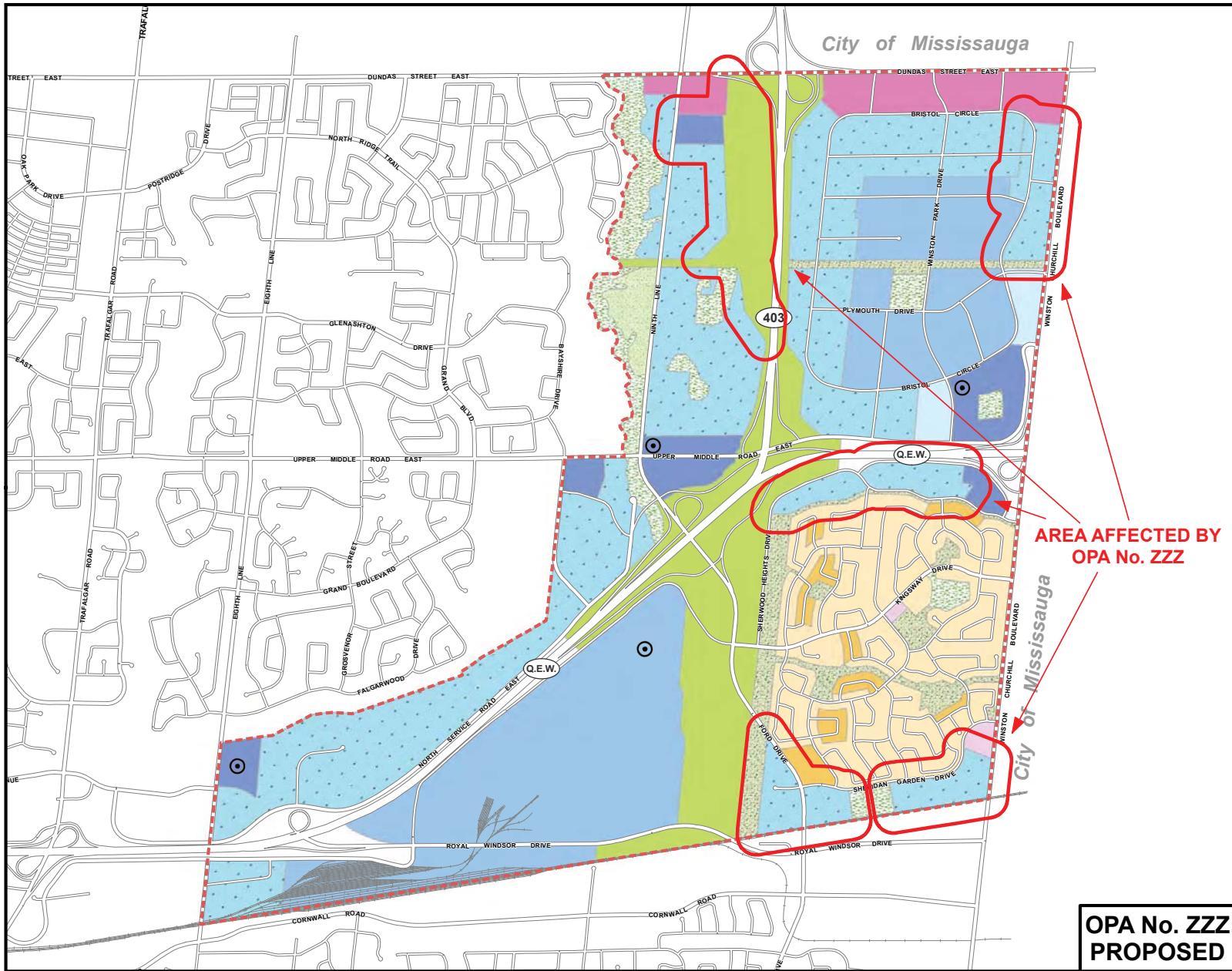
⊙ Refer to Part E, Exceptions



1:20,000

April 4, 2017

S:\DEPARTMENT\PLANNING\OPRA\LIBRARY_OAKVILLE\2017\OPA_ZZZ\ SCHEDULE J OPA_ZZZ_EXISTING.mxd



SCHEDULE J EAST LAND USE



- SCHEDULE AREA BOUNDARY
- LOW DENSITY RESIDENTIAL
- MEDIUM DENSITY RESIDENTIAL
- NEIGHBOURHOOD COMMERCIAL
- CORE COMMERCIAL
- OFFICE EMPLOYMENT
- BUSINESS EMPLOYMENT
- INDUSTRIAL
- BUSINESS COMMERCIAL
- NATURAL AREA
- PARKWAY BELT
- PARKS AND OPEN SPACE
- PRIVATE OPEN SPACE
- RAILWAY

⊙ Refer to Part E, Exceptions



1:20,000

June 2, 2017

S:\DEPARTMENT\PLANNING\OPAL\LIBRARY\OAKVILLE\2017\OPA_ZZZ\
SCHEDULE J - OPA ZZZ - PROPOSED.mxd