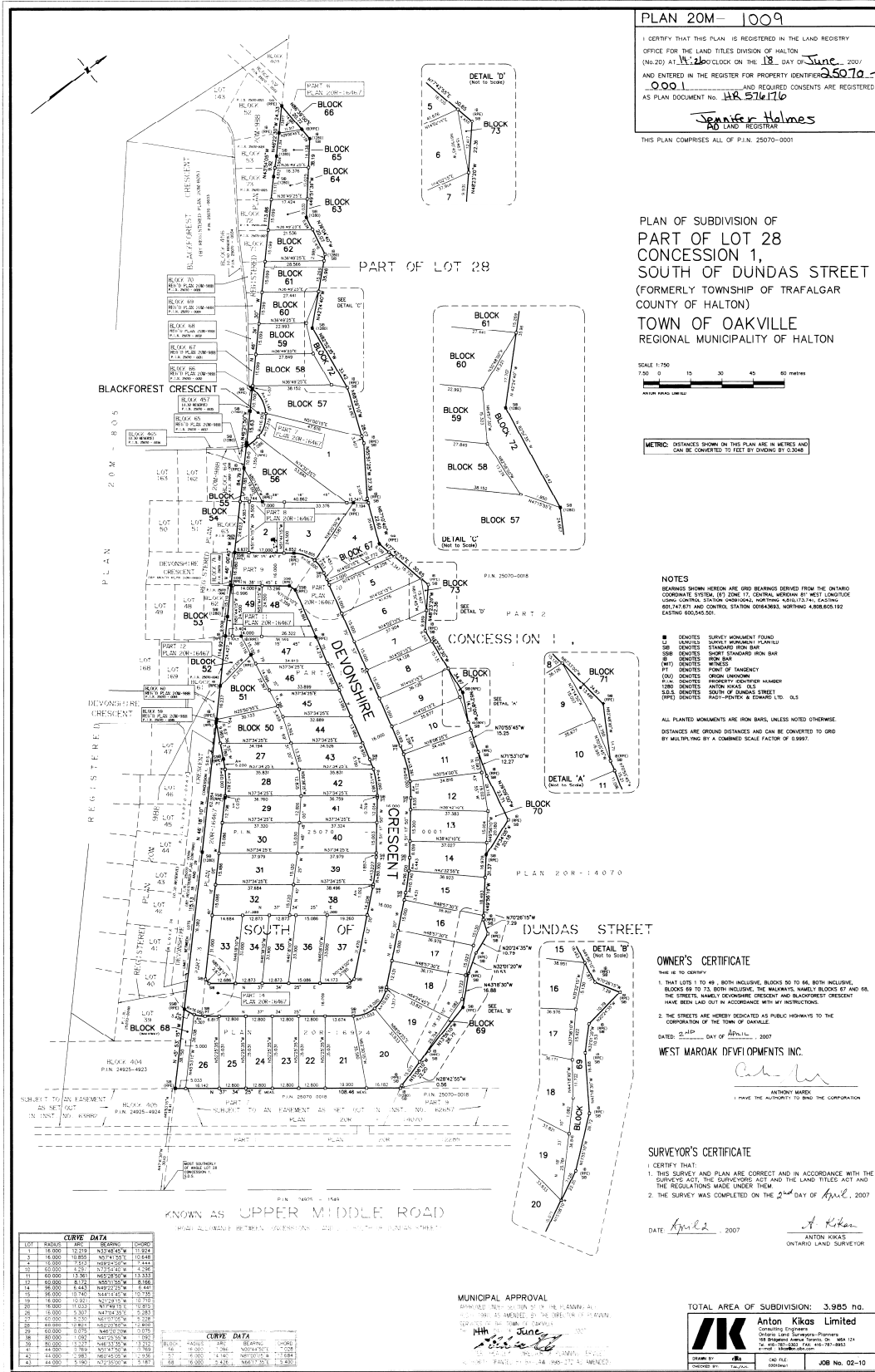


# APPENDIX 'A'



**PLAN 20M-1009**

I CERTIFY THAT THIS PLAN IS REGISTERED IN THE LAND REGISTRY OFFICE FOR THE LAND TITLES DIVISION OF HALTON (No.20) AT 11:20 O'CLOCK ON THE 18<sup>th</sup> DAY OF June 2007 AND ENTERED IN THE REGISTER FOR PROPERTY IDENTIFIERS 2507a-0001 AND REQUIRED CONSENTS ARE REGISTERED AS PLAN DOCUMENT No. HR 576176

*Jennifer Holmes*  
REGISTRAR

THIS PLAN COMPRISES ALL OF P.I.N. 25070-0001

**PLAN OF SUBDIVISION OF PART OF LOT 28 CONCESSION 1, SOUTH OF DUNDAS STREET (FORMERLY TOWNSHIP OF TRAFALGAR COUNTY OF HALTON) TOWN OF OAKVILLE REGIONAL MUNICIPALITY OF HALTON**

SCALE 1:750  
750 0 15 30 45 60 METRES  
METRIC UNITS ONLY

METRIC: DISTANCES SHOWN ON THIS PLAN ARE IN METRES AND CAN BE CONVERTED TO FEET BY DIVIDING BY 0.3048

**NOTES**

BEARINGS SHOWN HEREON ARE GRID BEARINGS DERIVED FROM THE ONTARIO COORDINATE SYSTEM (BY ZONE 17, CENTRAL MERIDIAN BY WEST LONGITUDE USING CONTROL STATION CHANDLER, NORTHING 4640134.1 EASTING 861747.876 AND CONTROL STATION 00163683, NORTHING 4306800.192 EASTING 800548.001)

- CONCRETE SURVEY MONUMENT FOUND
- SURVEY MONUMENT LOST
- SB CONCRETE STANDARD IRON BAR
- SBH CONCRETE SLOTTED STANDARD IRON BAR
- CONCRETE IRON BAR
- (P) CONCRETE PINNACLE
- (M) CONCRETE MOUND
- (O) CONCRETE OIL ORIGIN UNKNOWN
- (H) CONCRETE HARDWARE
- (T) CONCRETE TANK
- (S) CONCRETE SOUTH OF DUNDAS STREET
- (P) CONCRETE PAST-PENETEX & EDWARD LTD. OLS

ALL PLANTED MONUMENTS ARE IRON BARS, UNLESS NOTED OTHERWISE

DISTANCES ARE GROUND DISTANCES AND CAN BE CONVERTED TO GRID BY MULTIPLYING BY A COMBINED SCALE FACTOR OF 0.9997

**OWNER'S CERTIFICATE**

READ ME TO OBSERVE

- THAT LOTS 1 TO 49, BOTH INCLUSIVE, BLOCKS 50 TO 66, BOTH INCLUSIVE, BLOCKS 68 TO 73, BOTH INCLUSIVE, THE MAINLINE, NAMEL BLOCKS 67 AND 68, THE STREETS, NAMEL DEVONSHIRE CRESCENT AND BLACKFOREST CRESCENT HAVE BEEN Laid OUT IN ACCORDANCE WITH MY INSTRUCTIONS.
- THE STREETS ARE HEREBY DESIGNATED AS PUBLIC HIGHWAYS TO THE CORPORATION OF THE TOWN OF OAKVILLE

DATED: 2<sup>nd</sup> DAY OF April, 2007

**WEST MAROAK DEVELOPMENTS INC.**

*Anthony Marek*  
AUTHORITY HAD THE AUTHORITY TO END THE CORPORATION

**SURVEYOR'S CERTIFICATE**

I CERTIFY THAT:

- THIS SURVEY AND PLAN ARE CORRECT AND IN ACCORDANCE WITH THE SURVEYORS ACT, THE SURVEYORS REGULATION AND THE LAND TITLES ACT AND THE REGULATIONS MADE UNDER THEM.
- THE SURVEY WAS COMPLETED ON THE 2<sup>nd</sup> DAY OF April, 2007

DATE: April 2, 2007

*Anton Kikas*  
ANTON KIKAS  
ONTARIO LAND SURVEYOR

**CURVE DATA**

LOT	RADIUS	ARC	BEARING	CHORD
1	18.000	13.231	N75°34'00"W	11.9763
2	18.000	0.850	N87°14'50"W	10.4481
3	18.000	4.521	N85°00'00"W	7.4242
4	18.000	8.790	N72°54'40"W	7.4821
5	60.000	13.761	N65°00'00"W	6.3333
6	60.000	8.391	N60°00'00"W	6.8888
7	60.000	6.445	N52°22'30"W	6.4481
8	60.000	0.760	N44°14'40"W	6.0789
9	60.000	0.221	N37°42'15"W	6.0789
10	60.000	0.023	N31°46'15"W	6.0789
11	60.000	0.000	N26°16'30"W	6.0789
12	60.000	0.000	N20°46'45"W	6.0789
13	60.000	0.000	N15°17'00"W	6.0789
14	60.000	0.000	N9°47'15"W	6.0789
15	60.000	0.000	N3°17'30"W	6.0789
16	60.000	0.000	N0°00'00"W	6.0789
17	60.000	0.000	S0°00'00"W	6.0789
18	60.000	0.000	S6°17'30"W	6.0789
19	60.000	0.000	S12°34'45"W	6.0789
20	60.000	0.000	S18°51'45"W	6.0789
21	60.000	0.000	S25°08'45"W	6.0789
22	60.000	0.000	S31°25'45"W	6.0789
23	60.000	0.000	S37°42'45"W	6.0789
24	60.000	0.000	S43°59'45"W	6.0789
25	60.000	0.000	S50°16'45"W	6.0789
26	60.000	0.000	S56°33'45"W	6.0789
27	60.000	0.000	S62°50'45"W	6.0789
28	60.000	0.000	S69°07'45"W	6.0789
29	60.000	0.000	S75°24'45"W	6.0789
30	60.000	0.000	S81°41'45"W	6.0789
31	60.000	0.000	S87°58'45"W	6.0789
32	60.000	0.000	S94°15'45"W	6.0789
33	60.000	0.000	S00°32'45"W	6.0789
34	60.000	0.000	S06°49'45"W	6.0789
35	60.000	0.000	S13°06'45"W	6.0789
36	60.000	0.000	S19°23'45"W	6.0789
37	60.000	0.000	S25°40'45"W	6.0789
38	60.000	0.000	S31°57'45"W	6.0789
39	60.000	0.000	S38°14'45"W	6.0789
40	60.000	0.000	S44°31'45"W	6.0789
41	60.000	0.000	S50°48'45"W	6.0789
42	60.000	0.000	S56°65'45"W	6.0789
43	60.000	0.000	S62°82'45"W	6.0789
44	60.000	0.000	S68°99'45"W	6.0789
45	60.000	0.000	S74°16'45"W	6.0789
46	60.000	0.000	S80°33'45"W	6.0789
47	60.000	0.000	S86°50'45"W	6.0789
48	60.000	0.000	S93°07'45"W	6.0789
49	60.000	0.000	S99°24'45"W	6.0789

**CURVE DATA**

LOT	RADIUS	ARC	BEARING	CHORD
50	18.000	13.231	N75°34'00"W	11.9763
51	18.000	0.850	N87°14'50"W	10.4481
52	18.000	4.521	N85°00'00"W	7.4242
53	18.000	8.790	N72°54'40"W	7.4821
54	60.000	13.761	N65°00'00"W	6.3333
55	60.000	8.391	N60°00'00"W	6.8888
56	60.000	6.445	N52°22'30"W	6.4481
57	60.000	0.760	N44°14'40"W	6.0789
58	60.000	0.221	N37°42'15"W	6.0789
59	60.000	0.023	N31°46'15"W	6.0789
60	60.000	0.000	N26°16'30"W	6.0789
61	60.000	0.000	N20°46'45"W	6.0789
62	60.000	0.000	N15°17'00"W	6.0789
63	60.000	0.000	N9°47'15"W	6.0789
64	60.000	0.000	N3°17'30"W	6.0789
65	60.000	0.000	N0°00'00"W	6.0789
66	60.000	0.000	S0°00'00"W	6.0789
67	60.000	0.000	S6°17'30"W	6.0789
68	60.000	0.000	S12°34'45"W	6.0789
69	60.000	0.000	S18°51'45"W	6.0789
70	60.000	0.000	S25°08'45"W	6.0789
71	60.000	0.000	S31°25'45"W	6.0789
72	60.000	0.000	S37°42'45"W	6.0789
73	60.000	0.000	S43°59'45"W	6.0789

TOTAL AREA OF SUBDIVISION: 3.985 ha.

**Anton Kikas Limited**  
Consulting Engineers  
395 Sheppard Avenue East, Suite 104  
Toronto, Ontario M2N 6L2  
Tel: 416-491-2222 Fax: 416-491-2223  
www.antonkikas.com

DATE BY: [Signature] 08/04/07  
CHECKED BY: [Signature] 08/04/07  
JOB No. 02-10

## REGISTERED PLAN - 20M-1009