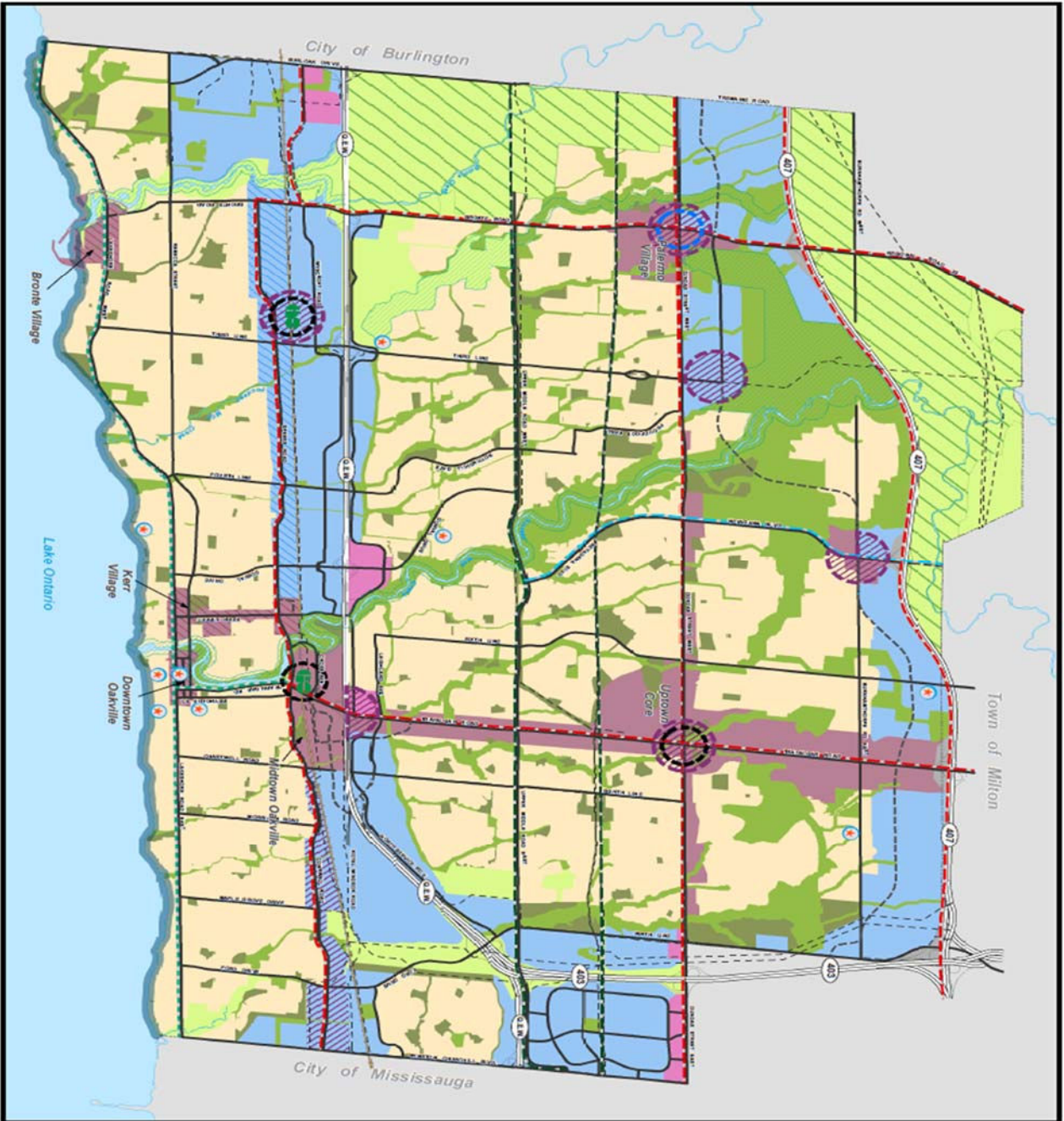


Appendix G  
Town of Oakville Urban Structure



**SCHEDULE A1  
URBAN STRUCTURE**

**LEGEND<sup>1</sup>**

- PARKWAY BELT
- GREENBELT
- GREENBELT - URBAN RIVER VALLEY
- NATURAL HERITAGE SYSTEM
- PARKS OPEN SPACE & CEMETERIES
- WATERFRONT OPEN SPACE
- NODES AND CORRIDORS
- EMPLOYMENT AREAS
- MAJOR COMMERCIAL AREAS
- RESIDENTIAL AREAS
- MAIN STREET AREA
- EMPLOYMENT MIXED USE CORRIDOR
- REGIONAL TRANSIT NODE
- PROPOSED REGIONAL TRANSIT NODE
- NODES AND CORRIDORS 2 FOR FURTHER STUDY
- MAJOR TRANSPORTATION CORRIDOR<sup>3</sup>
- PROPOSED MAJOR TRANSPORTATION CORRIDOR
- REGIONAL TRANSIT PRIORITY CORRIDOR
- MOBILITY LINK
- MAJOR ACTIVE TRANSPORTATION CONNECTIONS
- SCENIC CORRIDOR
- UTILITY CORRIDOR
- PROVINCIAL PRIORITY TRANSIT CORRIDOR
- MAJOR TRANSIT STATION
- HERITAGE CONSERVATION DISTRICTS/<sup>4</sup> CULTURAL HERITAGE LANDSCAPES

NOTE 1: This schedule does not represent land use designations.  
NOTE 2: In addition, the south side of Dundas is recognized as having the potential for redevelopment subject further study to more precisely delineate the extent of such areas.  
NOTE 3: Transportation corridors, with the exception of Provincial Highways, permit all transportation modes including transit, pedestrian and bicycle facilities.  
NOTE 4: Heritage Conservation Districts and Cultural Heritage landscapes are protected and regulated under the Ontario Heritage Act. They shall be added to Schedule A1, Urban Structure.

1:50,000

September 28, 2017

ESKINORP/PLANNING/PLANNING, LAND & DEVELOPMENT  
TOWN OF OAKVILLE, ONTARIO