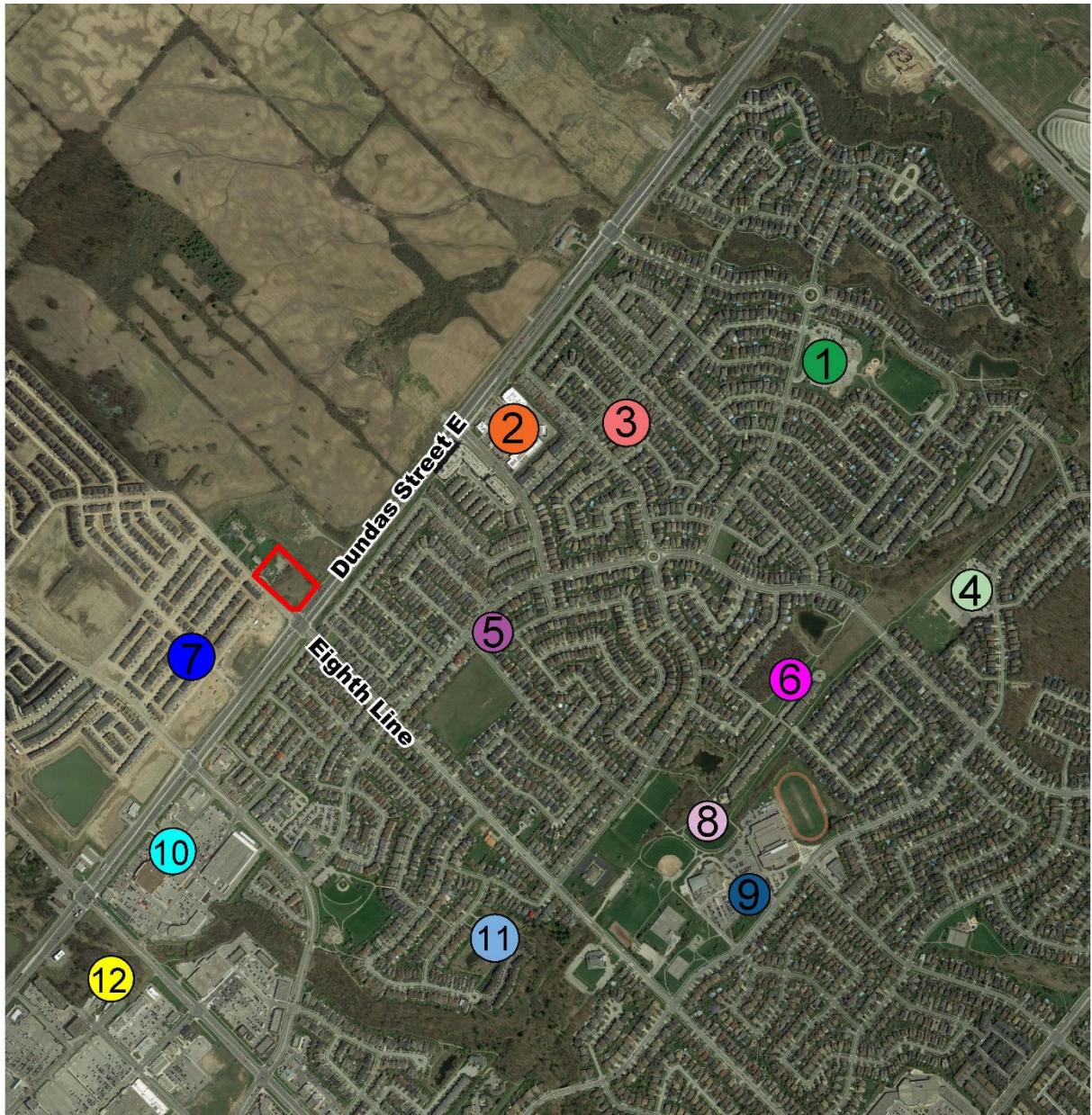


APPENDIX A: CONTEXT PLAN WITH SURROUNDING DESTINATIONS AND WALKING DISTANCES



Data Source: First Base Solutions Aerial Flown 2016

Figure
Context Map

1005 Dundas Street &
3033 Eighth Line,
Oakville, Ontario

LEGEND

Subject Lands

1 Joshua Creek Public School

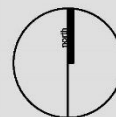
2 Shoppes on Dundas

3 Craigleith Park
4 St. Marguerite D'Youville Catholic School
5 North Ridge Trail Park
6 Nena Woods Park
7 William Rose Park

8 Glenashton Park
9 Iroquois Ridge Community Centre
10 Retail Plaza
11 Pondview Pond
12 Uptown Core Transit Terminal

DATE: September 10, 2019

SCALE N.T.S



\\fs1\trb - 100 Dundas - Iroquois Ridge\GIS\10109_1\gmap\figmap.dwg

MHBC PLANNING
URBAN DESIGN
& LANDSCAPE
ARCHITECTURE
442 BRANT STREET BURLINGTON, ON, L7R 2G4
P: 905 639 8686 F: 905 761 5589 | WWW.MHBCPLAN.COM

Table 1: Proximity of Subject Lands to Surrounding Destinations.

Destination	Travel Distance (km)	Travel Time		
		Walk	Cycle	Car
William Rose Park	0.50	6	1	1
Retail Plaza (Dundas / Postridge)	0.50	6	1	1
North Ridge Trail Park	0.70	8	3	1
Shoppes on Dundas	0.75	8	3	1
Craigleith Park	1.0	13	4	2
Uptown Core Transit Terminal	1.6	18	6	4
Glenashton Park	1.2	15	5	2
Iroquois Ridge Community Centre and High School	1.7	21	7	3
Joshua Creek Public School	1.8	21	7	4
Nena Woods Park	1.7	19	6	3
St. Marguerite d'Youville Catholic Elementary School	2.6	30	9	6
Pondview Pond	1.2	13	4	2