

1 Lakeshore Road Reconstruction & Streetscape Project

Public Consultation - December 2016

APPENDIX A

COMMUNITY CONSULTATION

The town is moving forward with a project to reconstruct Lakeshore Road East in downtown Oakville and is looking for public input as it plans the future streetscape for downtown.

LAKESHORE ROAD TRADITIONAL STREETScape FURNITURE SELECTION

After extensive public consultation, Council approved a traditional theme for the downtown streetscape furniture. Now we need your help choosing the actual pieces.

We have two options for each piece of streetscape furniture - bike rings, bollards, streetlight poles and benches - to show you. Simply select which pieces you like best.

While the furniture (bike rings, bollards, benches and streetlights) in these photos feature black metal, keep in mind you will be asked if you have a colour preference for the metal - moss green or graphite black.

We will also be asking your opinion on the light colour temperature for our streetlights. Feedback closes December 23. Staff will present the preferred pieces to the town's Heritage Committee in the New Year and then go to Council for approval in early 2017.

TELL US YOUR PREFERENCE

- Take a moment to examine each sample and the boards
- Complete a survey card or complete the online survey

FLEXIBLE / CURBLESS STREETS

We are also exploring the use of a flexible (curbless) design of the Lakeshore Road East configuration. Please review the Flexible / Curbless Street board to learn more about the advantages and disadvantages of this design and provide us with your feedback tonight or online on the Idea Forum on the Town's website.

WHAT HAPPENS NEXT?

Once we gather your feedback, staff will present the preferred suite of traditional furniture pieces to the town's Heritage Committee in the new year. Town staff will then go to Council for approval in early 2017.

Once finalized, the new streetscape materials and furnishings will be used as part of the Lakeshore Road Reconstruction and Streetscape Project slated to start in 2019. The same materials and furnishings will also be used on other streets in downtown Oakville as they are reconstructed in the future.

The new streetscape materials and furnishings will be included when the town undertakes to rehabilitate the Lakeshore Road Bridge at Sixteen Mile Creek starting in early 2017, including the roadway approaches between Navy Street and Forsythe Street.

GRANITE PAVER

Manufacturer: Polycor
Product: Caledonia (flamed finish)



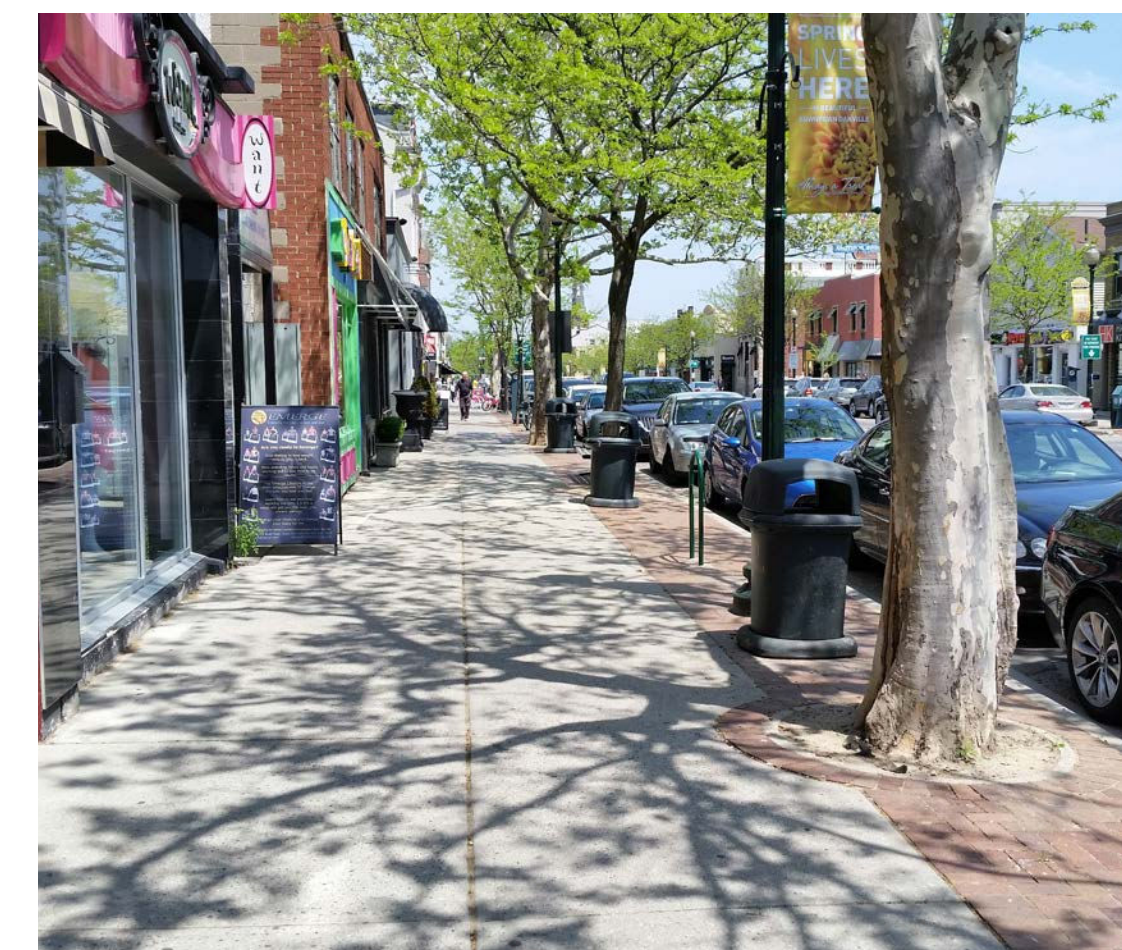
GRANITE CURB

Manufacturer: Polycor
Product: Caledonia (flamed finish)



LITTER & RECYCLING

Manufacturer: Victor Stanley
Product: SDC 36



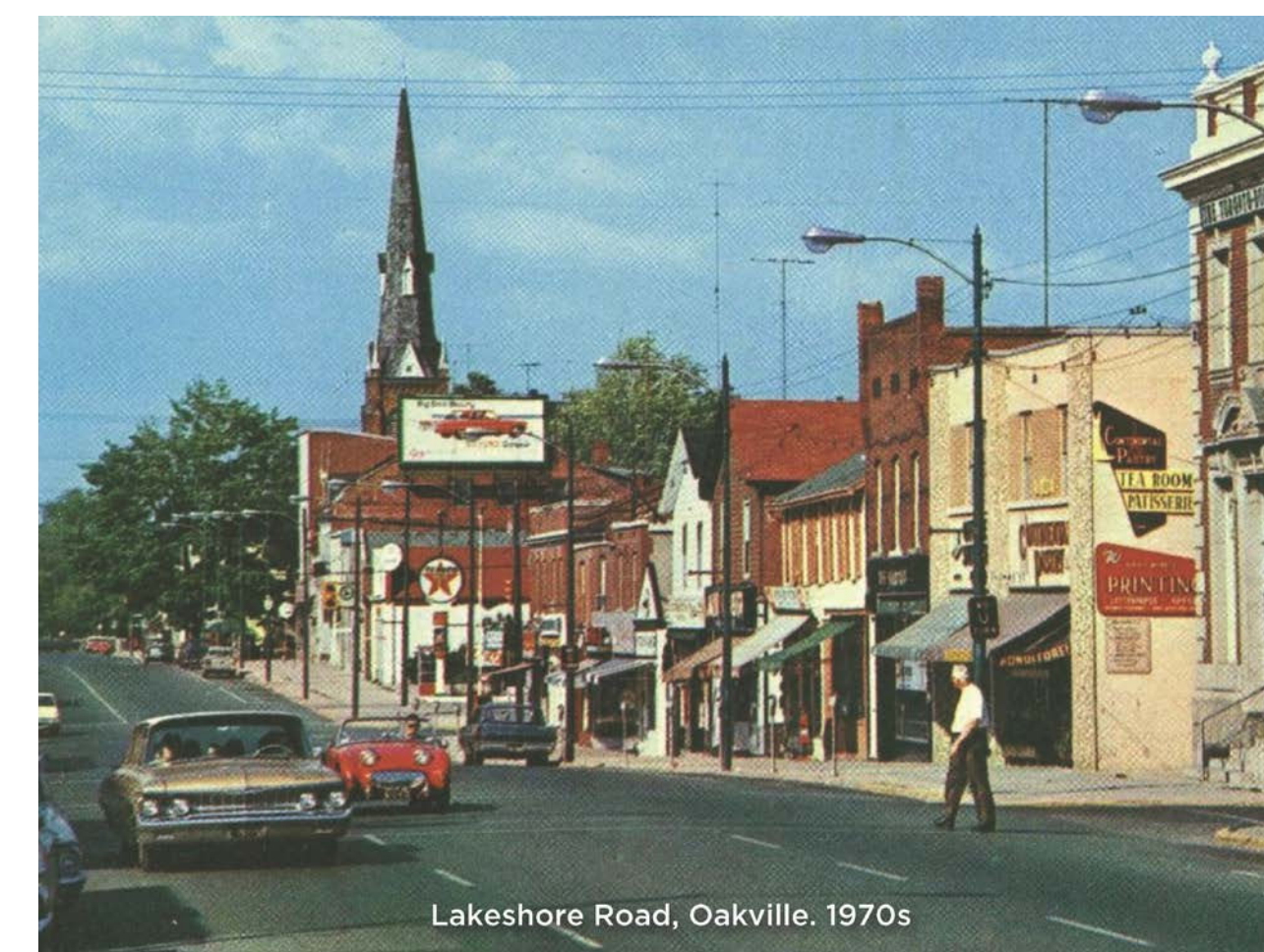
Colborne Street (Lakeshore Road), Oakville. 1914



Lakeshore Road, Oakville. 1930s



Lakeshore Road, Oakville. 1950s



Lakeshore Road, Oakville. 1970s



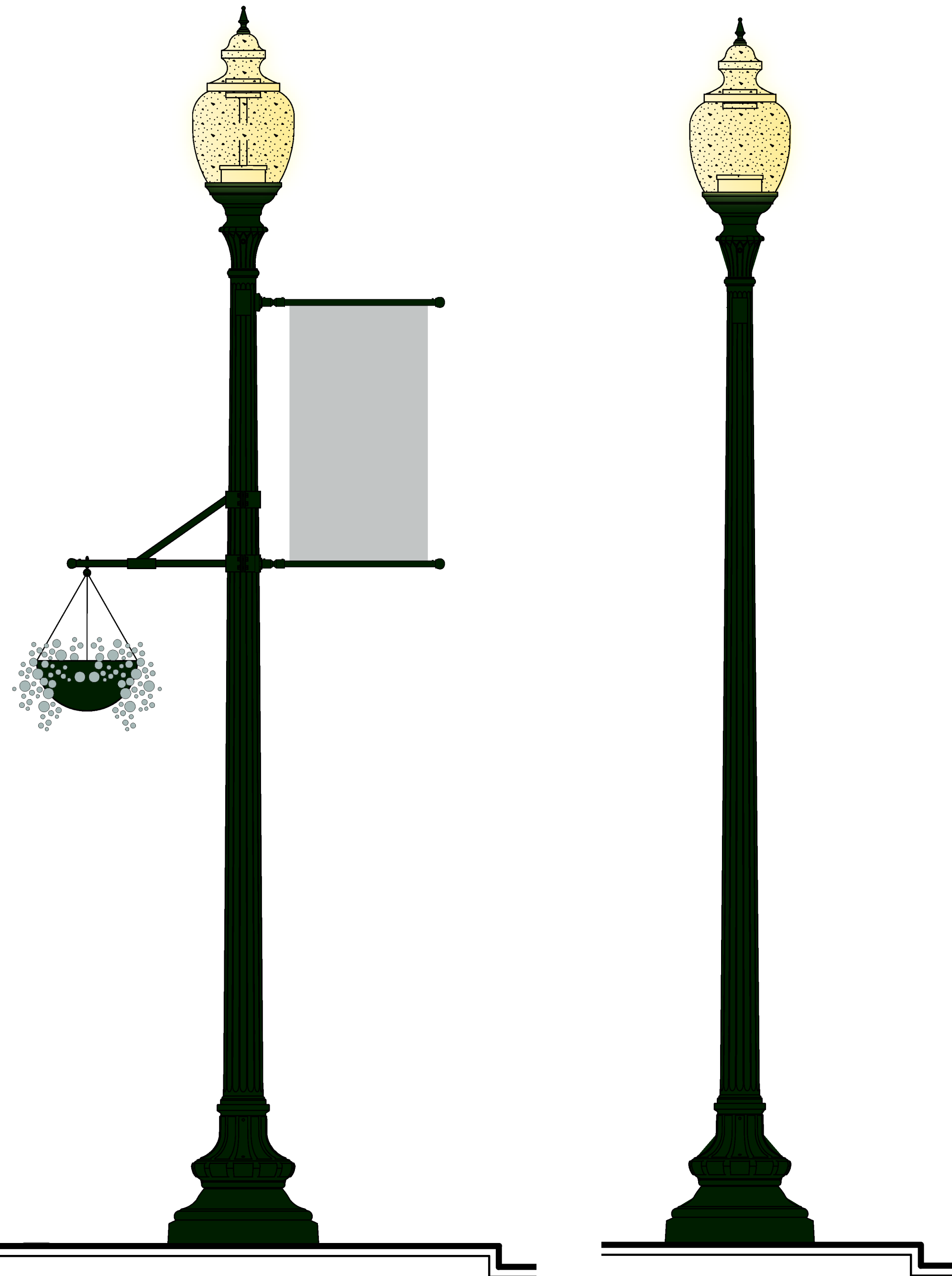
Lakeshore Road, Oakville. 2011

TRADITIONAL SITE FURNISHINGS

Acorn style light & pole to match existing



RECOMMENDED STREETLIGHT



Pendant style roadway and pedestrian lighting



TRADITIONAL SITE FURNISHINGS

RECOMMENDED BENCH

landscapeforms
Planwell bench



Maglin MLB310
bench



RECOMMENDED RING

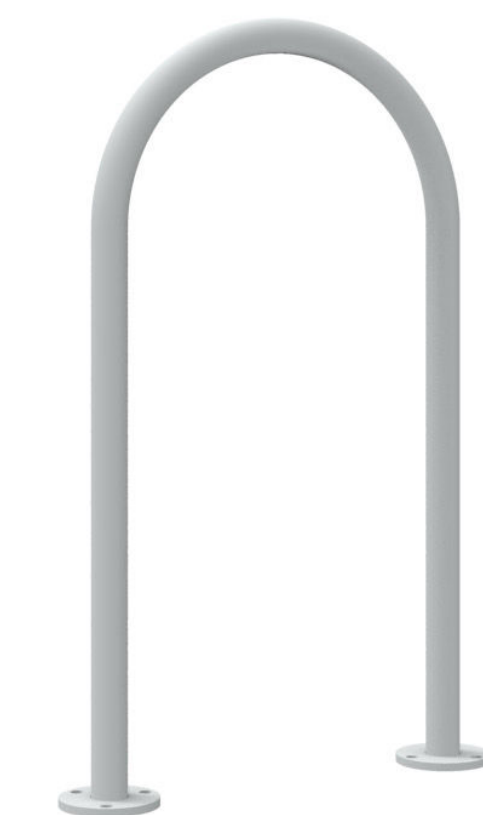
Maglin MRB200
Bike Ring



RECOMMENDED BIKE RING

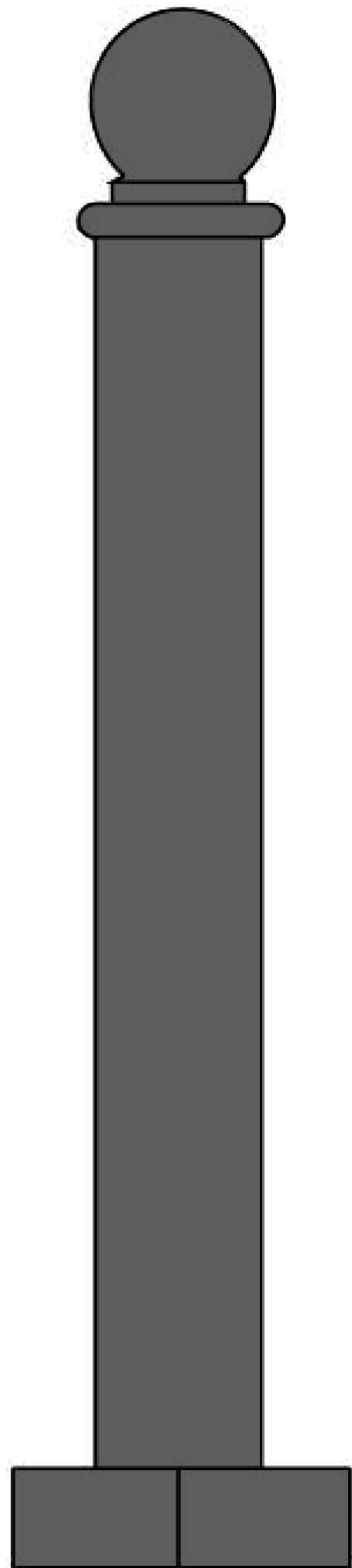


Maglin MRB500
Bike Ring



TRADITIONAL SITE FURNISHINGS

HCI B602
Bollard



Maglin MTB100
Bollard



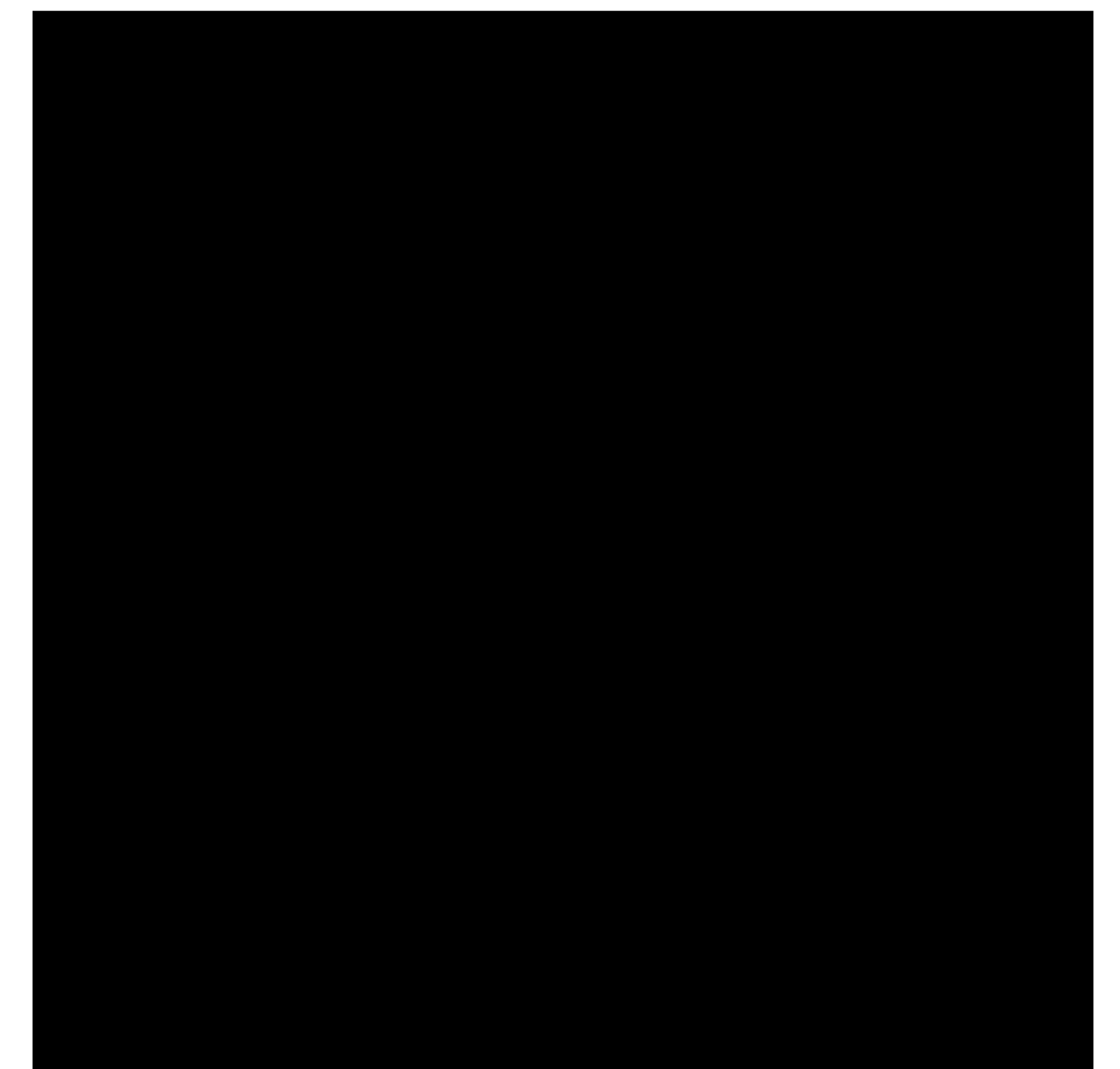
RECOMMENDED
BOLLARD



While the pictures of the streetscape furniture in this photo library feature black metal, the furniture can be in either green or black. Let us know which colour you prefer. The preferred colour will apply to all of the materials selected and would not be mixed and matched to specific pieces.



RAL 6005
Moss Green
(match to existing)



RAL 9011
Graphite Black
RECOMMENDED COLOUR

FLEXIBLE / CURBLESS STREETS

Traditional Street with a Raised Curb



Advantages

- raised curbs make parallel parking easier
- utilizes existing maintenance equipment and practices
- less expensive to maintain stormwater system using traditional catch basins
- accommodates accessible ramps on transit vehicles
- raised curb can protect boulevard elements from damage

Disadvantages

- conventional street design that prioritizes and divides modes of travel
- only accessible at curb depressions, which are typically at corners and not mid-block
- when the street is closed for events, it does not function as a contiguous open area as raised curbs break up the space and limit use

Flexible Street with a Flush Curb



Advantages

- during street closures and events, roadway transforms to an open plaza space with no physical barriers
- progressive street design where automobiles are not the dominant mode of travel
- fully accessible design - no raised curbs impeding access to and from boulevard
- the design of the street causes traffic to move slower in anticipation of more activity
- passive traffic calming effect due to increased activity in the street

Disadvantages

- parallel parking more challenging due to lack of curb
- may require specialized maintenance equipment and practices
- more expensive to maintain trench drains as they must be kept clear of debris at all times
- not optimized for accessible ramps on transit vehicles
- boulevard elements may be damaged more frequently as they act as a separator between boulevard and roadway

Lakeshore Road Bridge

Bridge

The Lakeshore Road Bridge over Sixteen Mile Creek is scheduled to be rehabilitated starting in January 2017 and will be completed in late fall 2017. We'd like your opinion on what bridge railing to choose:

1



2



3



RECOMMENDED
RAILING STYLE

The existing bridge railing height is 1.10 metres.

The proposed railing height, regardless of the railing option selected, will be 1.40 metres.