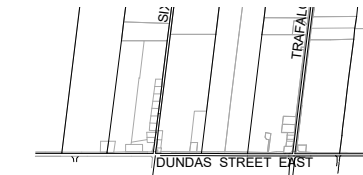


APPENDIX 'B'

APPENDIX 'B'

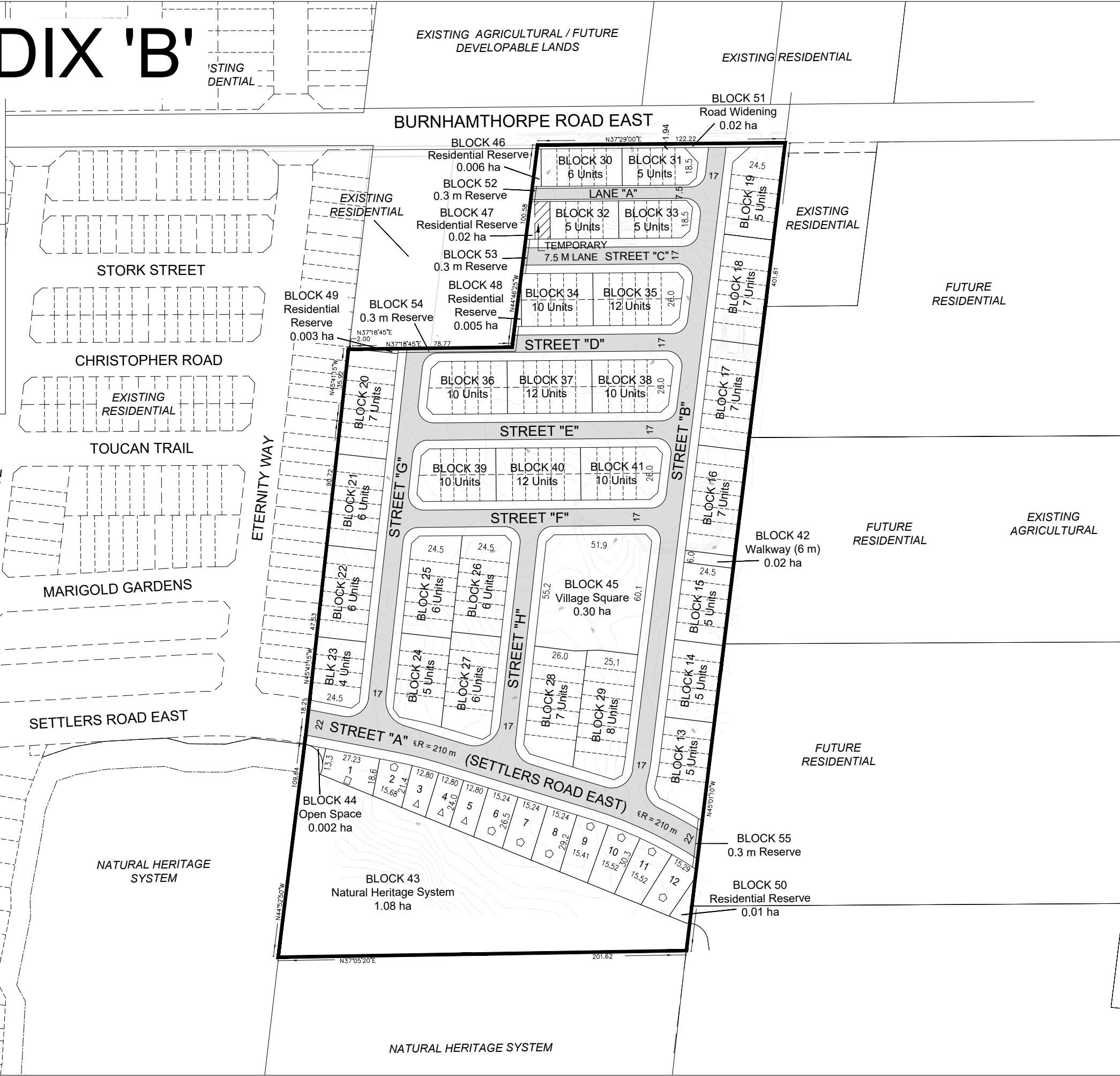


KEY MAP
N.T.S. SUBJECT PROPERTY

24T- SDE CALCULATIONS

Unit Type	Blocks	Units	SDE*
Single Detached	1-12	12	12
Townhouse	13-33	123	99.6
Back-to-Back Townhouse	34-41	86	42.1
Total		221	153.8

* SDE Factors:
Detached - 1.00
Townhouse - 0.81
Back-to-Back Townhouse - 0.49



DRAFT PLAN OF SUBDIVISION 24T-
Argo Oakville Woods Corporation
PART OF LOT 14
CONCESSION 1, NORTH OF DUNDAS STREET
GEOGRAPHIC TOWNSHIP OF TRAFALGAR
NOW IN THE
TOWN OF OAKVILLE
REGIONAL MUNICIPALITY OF HALTON

OWNER'S AUTHORIZATION
I HEREBY AUTHORIZE KORSIK URBAN PLANNING TO PREPARE AND SUBMIT THIS DRAFT PLAN OF SUBDIVISION TO THE TOWN OF OAKVILLE FOR APPROVAL.
SIGNED Scott Bland DATE _____
Scott Bland
Argo Oakville Woods Corporation
4900 Palladium Way, Suite 105, Burlington, Ontario L7M 0W7

SURVEYOR'S CERTIFICATE
I HEREBY CERTIFY THAT THE BOUNDARIES OF THE LANDS TO BE SUBDIVIDED AS SHOWN ON THIS PLAN AND THEIR RELATIONSHIP TO ADJACENT LANDS ARE CORRECTLY AND ACCURATELY SHOWN.
SIGNED R.S. Querubin DATE July 25, 2024
R.S. Querubin, Ontario Land Surveyor

J.D. BARNES
LAND INFORMATION SPECIALISTS
SURVEYING & MAPPING GIS
180 WHEELABRATOR WAY, SUITE A, MISSISSAUGA, ON L4T 1P1
T: (905) 875-9905 F: (905) 875-9906 www.jdbarnes.com

ADDITIONAL INFORMATION (UNDER SECTION 51 (17) OF THE PLANNING ACT)
A) SHOWN ON PLAN
B) SHOWN ON PLAN
C) SHOWN ON PLAN
D) SHOWN ON PLAN
E) SHOWN ON PLAN
F) SHOWN ON PLAN
G) SHOWN ON PLAN
H) MUNICIPAL AND PIPED WATER TO BE PROVIDED
I) CLAY LOAM
J) SHOWN ON PLAN
K) SANITARY AND STORM SEWERS TO BE PROVIDED
L) SHOWN ON PLAN

LAND USE SCHEDULE

Land Use	Lots/Blocks	Lot/Block Total	Area (ha)	Units
□ Single Detached (Custom)	1	1	0.04	1
◇ Single Detached (15.24 m)	2, 6-12	8	0.34	8
△ Single Detached (12.80 m)	3-5	3	0.09	3
Street Townhouses (7.0m)	13-29	17	1.98	102
Rear Lane Townhouses (6.1m)	30-33	4	0.27	21
Back-to-Back Townhouses (6.4m)	34-41	8	0.82	86
Walkway (6 m)	42	1	0.02	
Natural Heritage System (NHS)	43	1	1.08	
Open Space	44	1	0.002	
Village Square	45	1	0.30	
Residential Reserve	46-50	5	0.04	
Road Widening	51	1	0.02	
0.3m Reserve	52-55	4	0.00	
7.5 m ROW (81 m)			0.06	
17 m ROW (1,004 m)			1.75	
22 m ROW (204 m)			0.45	
Total	1-55	55	7.26	221

DATE [D.M.Y.]	REVISION	A	JH
11/12/2024	First Submission		
		DWG	BY

NOTES:
- Pavement illustration is diagrammatic
- Local to Burnhamthorpe Road = 7.5m
- Local to Local or Collector daylight triangle = 3.5m

ARGO DEVELOPMENT CORP

SCALE 1:2000 February 3, 2025

DRAWN BY: JH CHECKED BY: KC

KORSIAK Urban Planning
206-277 Lakeshore Road East
Oakville, Ontario L6J 1N9
T: 905-257-0227
info@korsiak.com

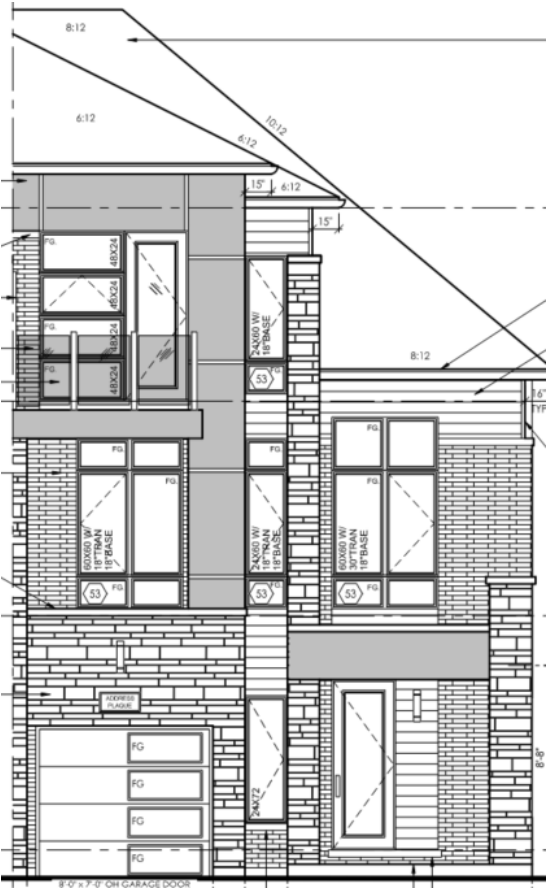
APPENDIX 'B'



Street Townhouse 'A' – End Condition



Street Townhouse 'A' – Interior Condition

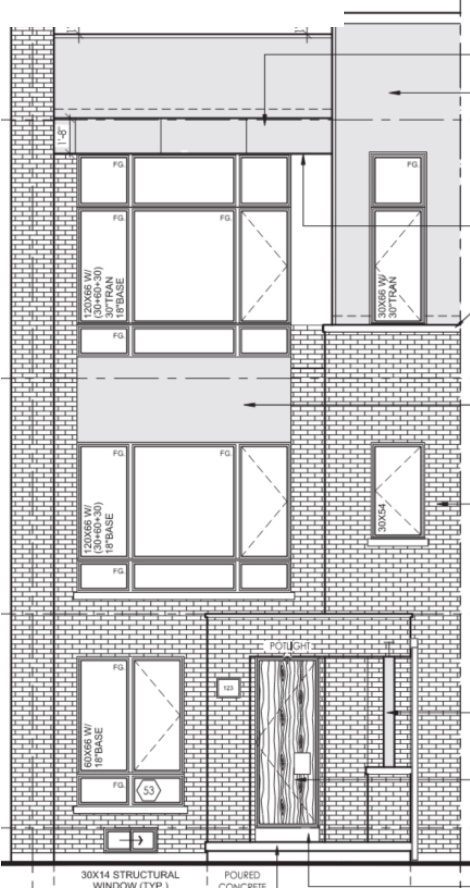


Street Townhouse 'B' – End Condition



Street Townhouse 'B' – Interior Condition

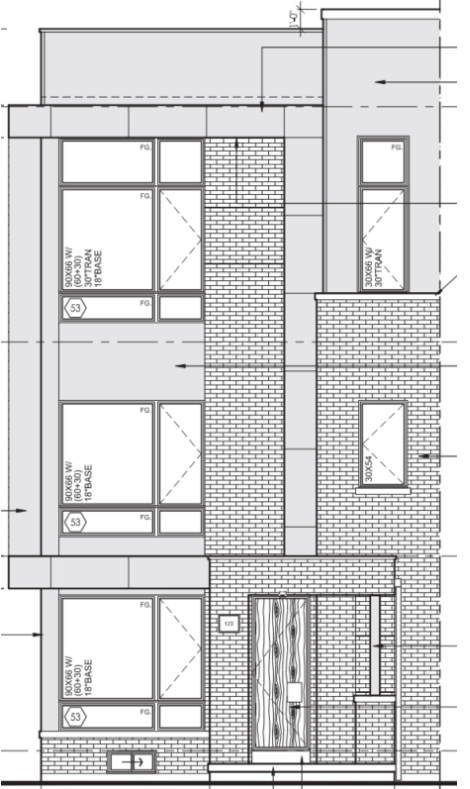
APPENDIX 'B'



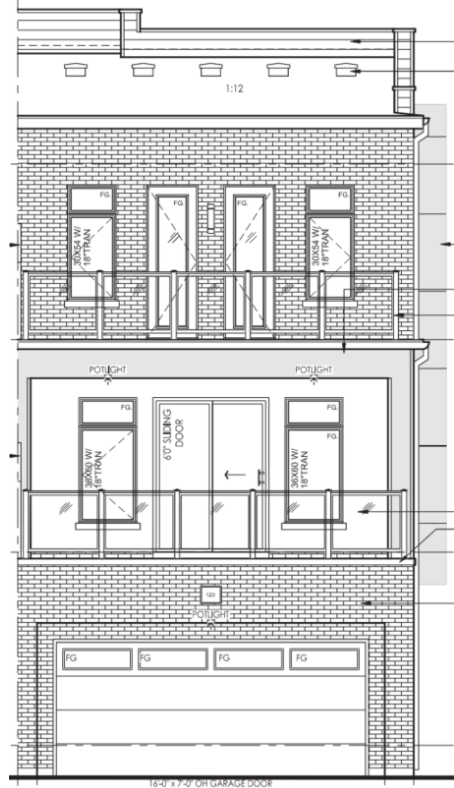
Rear lane Townhouse – Interior Unit



Rear lane Townhouse – Interior Unit

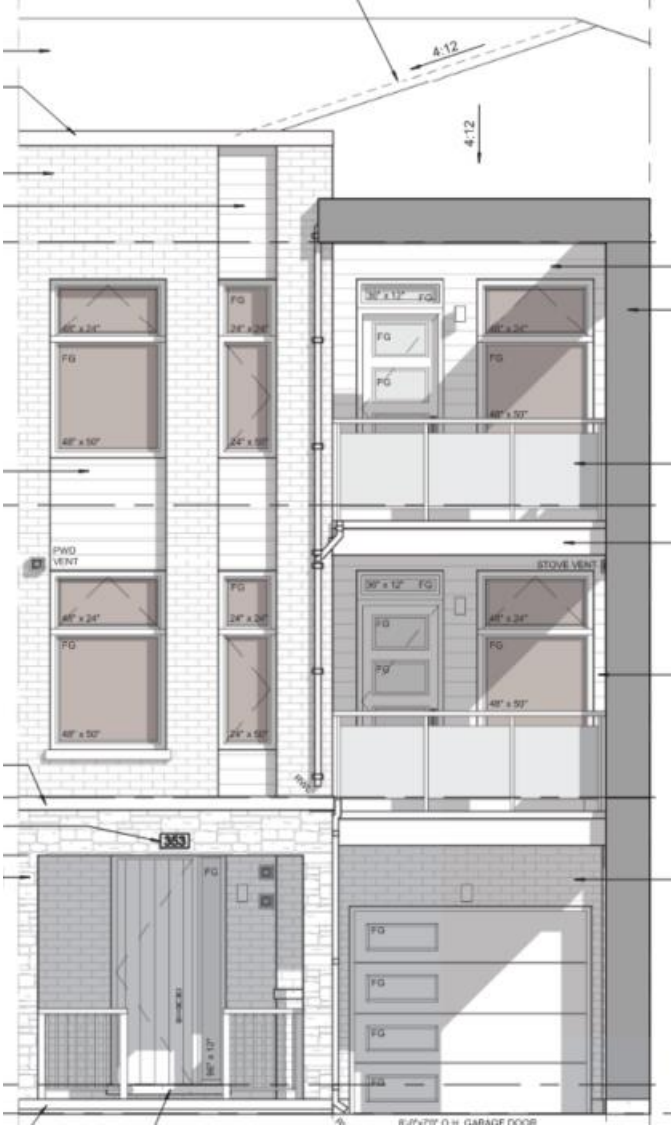


Rear lane Townhouse – End Unit



Rear lane Townhouse – End Unit

APPENDIX 'B'



Back to Back Townhouse – Front Elevation

APPENDIX 'B'



Detached Dwelling – Type 'A' Front



Detached Dwelling – Type 'A' Rear



Detached Dwelling – Type 'B' Front

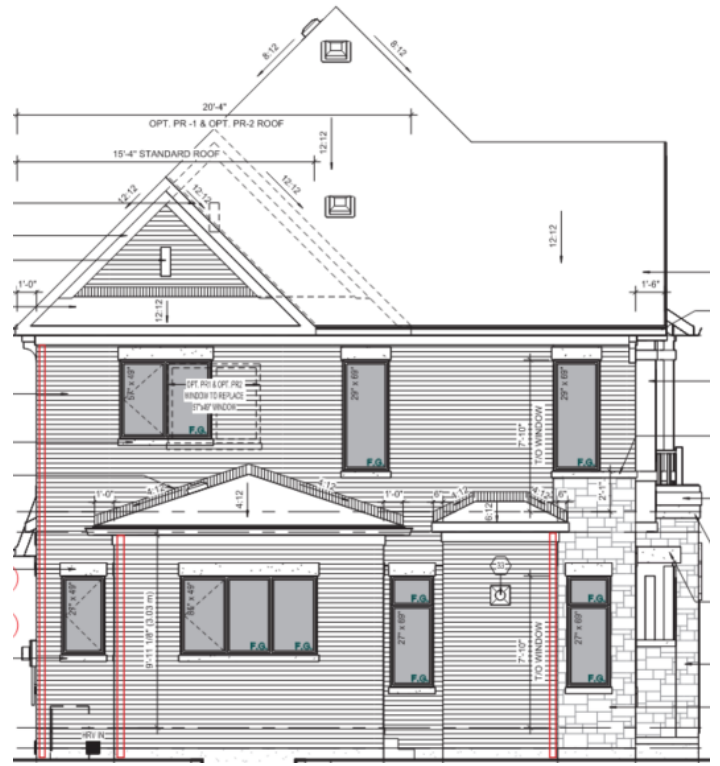


Detached Dwelling – Type 'B' Rear

APPENDIX 'B'



Detached Dwelling – Type 'C' Front



Detached Dwelling – Type 'C' Rear



Detached Dwelling – Flankage

- UNLESS OTHERWISE SPECIFIED, ALL MATERIALS SHALL BE TO COMPLY WITH THE LATEST EDITIONS OF THE FOLLOWING:
- ASBESTOS-RESISTANT GYPSUM BOARD
- ASTM A 36
- ASTM A 992
- ASTM A 136
- ASTM A 193
- ASTM A 242
- ASTM A 283
- ASTM A 305
- ASTM A 368
- ASTM A 396
- ASTM A 424
- ASTM A 449
- ASTM A 510
- ASTM A 568
- ASTM A 583
- ASTM A 601
- ASTM A 633
- ASTM A 651
- ASTM A 660
- ASTM A 687
- ASTM A 709
- ASTM A 734
- ASTM A 751
- ASTM A 768
- ASTM A 781
- ASTM A 789
- ASTM A 817
- ASTM A 835
- ASTM A 847
- ASTM A 871
- ASTM A 888
- ASTM A 913
- ASTM A 955
- ASTM A 994
- ASTM A 1002
- ASTM A 1011
- ASTM A 1025
- ASTM A 1035
- ASTM A 1043
- ASTM A 1052
- ASTM A 1062
- ASTM A 1080
- ASTM A 1099
- ASTM A 1119
- ASTM A 1136
- ASTM A 1151
- ASTM A 1163
- ASTM A 1181
- ASTM A 1191
- ASTM A 1201
- ASTM A 1216
- ASTM A 1232
- ASTM A 1249
- ASTM A 1252
- ASTM A 1259
- ASTM A 1270
- ASTM A 1274
- ASTM A 1290
- ASTM A 1302
- ASTM A 1330
- ASTM A 1348
- ASTM A 1362
- ASTM A 1370
- ASTM A 1380
- ASTM A 1395
- ASTM A 1401
- ASTM A 1424
- ASTM A 1434
- ASTM A 1444
- ASTM A 1454
- ASTM A 1462
- ASTM A 1472
- ASTM A 1480
- ASTM A 1490
- ASTM A 1501
- ASTM A 1505
- ASTM A 1518
- ASTM A 1529
- ASTM A 1539
- ASTM A 1549
- ASTM A 1553
- ASTM A 1562
- ASTM A 1570
- ASTM A 1575
- ASTM A 1583
- ASTM A 1593
- ASTM A 1603
- ASTM A 1606
- ASTM A 1617
- ASTM A 1626
- ASTM A 1633
- ASTM A 1643
- ASTM A 1653
- ASTM A 1663
- ASTM A 1673
- ASTM A 1683
- ASTM A 1693
- ASTM A 1703
- ASTM A 1713
- ASTM A 1723
- ASTM A 1733
- ASTM A 1743
- ASTM A 1753
- ASTM A 1763
- ASTM A 1773
- ASTM A 1783
- ASTM A 1793
- ASTM A 1803
- ASTM A 1813
- ASTM A 1823
- ASTM A 1833
- ASTM A 1843
- ASTM A 1853
- ASTM A 1863
- ASTM A 1873
- ASTM A 1883
- ASTM A 1893
- ASTM A 1903
- ASTM A 1913
- ASTM A 1923
- ASTM A 1933
- ASTM A 1943
- ASTM A 1953
- ASTM A 1963
- ASTM A 1973
- ASTM A 1983
- ASTM A 1993
- ASTM A 2003
- ASTM A 2013
- ASTM A 2023
- ASTM A 2033
- ASTM A 2043
- ASTM A 2053
- ASTM A 2063
- ASTM A 2073
- ASTM A 2083
- ASTM A 2093
- ASTM A 2103
- ASTM A 2113
- ASTM A 2123
- ASTM A 2133
- ASTM A 2143
- ASTM A 2153
- ASTM A 2163
- ASTM A 2173
- ASTM A 2183
- ASTM A 2193
- ASTM A 2203
- ASTM A 2213
- ASTM A 2223
- ASTM A 2233
- ASTM A 2243
- ASTM A 2253
- ASTM A 2263
- ASTM A 2273
- ASTM A 2283
- ASTM A 2293
- ASTM A 2303
- ASTM A 2313
- ASTM A 2323
- ASTM A 2333
- ASTM A 2343
- ASTM A 2353
- ASTM A 2363
- ASTM A 2373
- ASTM A 2383
- ASTM A 2393
- ASTM A 2403
- ASTM A 2413
- ASTM A 2423
- ASTM A 2433
- ASTM A 2443
- ASTM A 2453
- ASTM A 2463
- ASTM A 2473
- ASTM A 2483
- ASTM A 2493
- ASTM A 2503
- ASTM A 2513
- ASTM A 2523
- ASTM A 2533
- ASTM A 2543
- ASTM A 2553
- ASTM A 2563
- ASTM A 2573
- ASTM A 2583
- ASTM A 2593
- ASTM A 2603
- ASTM A 2613
- ASTM A 2623
- ASTM A 2633
- ASTM A 2643
- ASTM A 2653
- ASTM A 2663
- ASTM A 2673
- ASTM A 2683
- ASTM A 2693
- ASTM A 2703
- ASTM A 2713
- ASTM A 2723
- ASTM A 2733
- ASTM A 2743
- ASTM A 2753
- ASTM A 2763
- ASTM A 2773
- ASTM A 2783
- ASTM A 2793
- ASTM A 2803
- ASTM A 2813
- ASTM A 2823
- ASTM A 2833
- ASTM A 2843
- ASTM A 2853
- ASTM A 2863
- ASTM A 2873
- ASTM A 2883
- ASTM A 2893
- ASTM A 2903
- ASTM A 2913
- ASTM A 2923
- ASTM A 2933
- ASTM A 2943
- ASTM A 2953
- ASTM A 2963
- ASTM A 2973
- ASTM A 2983
- ASTM A 2993
- ASTM A 3003
- ASTM A 3013
- ASTM A 3023
- ASTM A 3033
- ASTM A 3043
- ASTM A 3053
- ASTM A 3063
- ASTM A 3073
- ASTM A 3083
- ASTM A 3093
- ASTM A 3103
- ASTM A 3113
- ASTM A 3123
- ASTM A 3133
- ASTM A 3143
- ASTM A 3153
- ASTM A 3163
- ASTM A 3173
- ASTM A 3183
- ASTM A 3193
- ASTM A 3203
- ASTM A 3213
- ASTM A 3223
- ASTM A 3233
- ASTM A 3243
- ASTM A 3253
- ASTM A 3263
- ASTM A 3273
- ASTM A 3283
- ASTM A 3293
- ASTM A 3303
- ASTM A 3313
- ASTM A 3323
- ASTM A 3333
- ASTM A 3343
- ASTM A 3353
- ASTM A 3363
- ASTM A 3373
- ASTM A 3383
- ASTM A 3393
- ASTM A 3403
- ASTM A 3413
- ASTM A 3423
- ASTM A 3433
- ASTM A 3443
- ASTM A 3453
- ASTM A 3463
- ASTM A 3473
- ASTM A 3483
- ASTM A 3493
- ASTM A 3503
- ASTM A 3513
- ASTM A 3523
- ASTM A 3533
- ASTM A 3543
- ASTM A 3553
- ASTM A 3563
- ASTM A 3573
- ASTM A 3583
- ASTM A 3593
- ASTM A 3603
- ASTM A 3613
- ASTM A 3623
- ASTM A 3633
- ASTM A 3643
- ASTM A 3653
- ASTM A 3663
- ASTM A 3673
- ASTM A 3683
- ASTM A 3693
- ASTM A 3703
- ASTM A 3713
- ASTM A 3723
- ASTM A 3733
- ASTM A 3743
- ASTM A 3753
- ASTM A 3763
- ASTM A 3773
- ASTM A 3783
- ASTM A 3793
- ASTM A 3803
- ASTM A 3813
- ASTM A 3823
- ASTM A 3833
- ASTM A 3843
- ASTM A 3853
- ASTM A 3863
- ASTM A 3873
- ASTM A 3883
- ASTM A 3893
- ASTM A 3903
- ASTM A 3913
- ASTM A 3923
- ASTM A 3933
- ASTM A 3943
- ASTM A 3953
- ASTM A 3963
- ASTM A 3973
- ASTM A 3983
- ASTM A 3993
- ASTM A 4003
- ASTM A 4013
- ASTM A 4023
- ASTM A 4033
- ASTM A 4043
- ASTM A 4053
- ASTM A 4063
- ASTM A 4073
- ASTM A 4083
- ASTM A 4093
- ASTM A 4103
- ASTM A 4113
- ASTM A 4123
- ASTM A 4133
- ASTM A 4143
- ASTM A 4153
- ASTM A 4163
- ASTM A 4173
- ASTM A 4183
- ASTM A 4193
- ASTM A 4203
- ASTM A 4213
- ASTM A 4223
- ASTM A 4233
- ASTM A 4243
- ASTM A 4253
- ASTM A 4263
- ASTM A 4273
- ASTM A 4283
- ASTM A 4293
- ASTM A 4303
- ASTM A 4313
- ASTM A 4323
- ASTM A 4333
- ASTM A 4343
- ASTM A 4353
- ASTM A 4363
- ASTM A 4373
- ASTM A 4383
- ASTM A 4393
- ASTM A 4403
- ASTM A 4413
- ASTM A 4423
- ASTM A 4433
- ASTM A 4443
- ASTM A 4453
- ASTM A 4463
- ASTM A 4473
- ASTM A 4483
- ASTM A 4493
- ASTM A 4503
- ASTM A 4513
- ASTM A 4523
- ASTM A 4533
- ASTM A 4543
- ASTM A 4553
- ASTM A 4563
- ASTM A 4573
- ASTM A 4583
- ASTM A 4593
- ASTM A 4603
- ASTM A 4613
- ASTM A 4623
- ASTM A 4633
- ASTM A 4643
- ASTM A 4653
- ASTM A 4663
- ASTM A 4673
- ASTM A 4683
- ASTM A 4693
- ASTM A 4703
- ASTM A 4713
- ASTM A 4723
- ASTM A 4733
- ASTM A 4743
- ASTM A 4753
- ASTM A 4763
- ASTM A 4773
- ASTM A 4783
- ASTM A 4793
- ASTM A 4803
- ASTM A 4813
- ASTM A 4823
- ASTM A 4833
- ASTM A 4843
- ASTM A 4853
- ASTM A 4863
- ASTM A 4873
- ASTM A 4883
- ASTM A 4893
- ASTM A 4903
- ASTM A 4913
- ASTM A 4923
- ASTM A 4933
- ASTM A 4943
- ASTM A 4953
- ASTM A 4963
- ASTM A 4973
- ASTM A 4983
- ASTM A 4993
- ASTM A 5003

NOTES:
1. ALL DIMENSIONS ARE TO FACE UNLESS OTHERWISE SPECIFIED.
2. ALL DIMENSIONS ARE TO FACE UNLESS OTHERWISE SPECIFIED.
3. ALL DIMENSIONS ARE TO FACE UNLESS OTHERWISE SPECIFIED.
4. ALL DIMENSIONS ARE TO FACE UNLESS OTHERWISE SPECIFIED.
5. ALL DIMENSIONS ARE TO FACE UNLESS OTHERWISE SPECIFIED.
6. ALL DIMENSIONS ARE TO FACE UNLESS OTHERWISE SPECIFIED.
7. ALL DIMENSIONS ARE TO FACE UNLESS OTHERWISE SPECIFIED.
8. ALL DIMENSIONS ARE TO FACE UNLESS OTHERWISE SPECIFIED.
9. ALL DIMENSIONS ARE TO FACE UNLESS OTHERWISE SPECIFIED.
10. ALL DIMENSIONS ARE TO FACE UNLESS OTHERWISE SPECIFIED.