

# Planning & Development Council

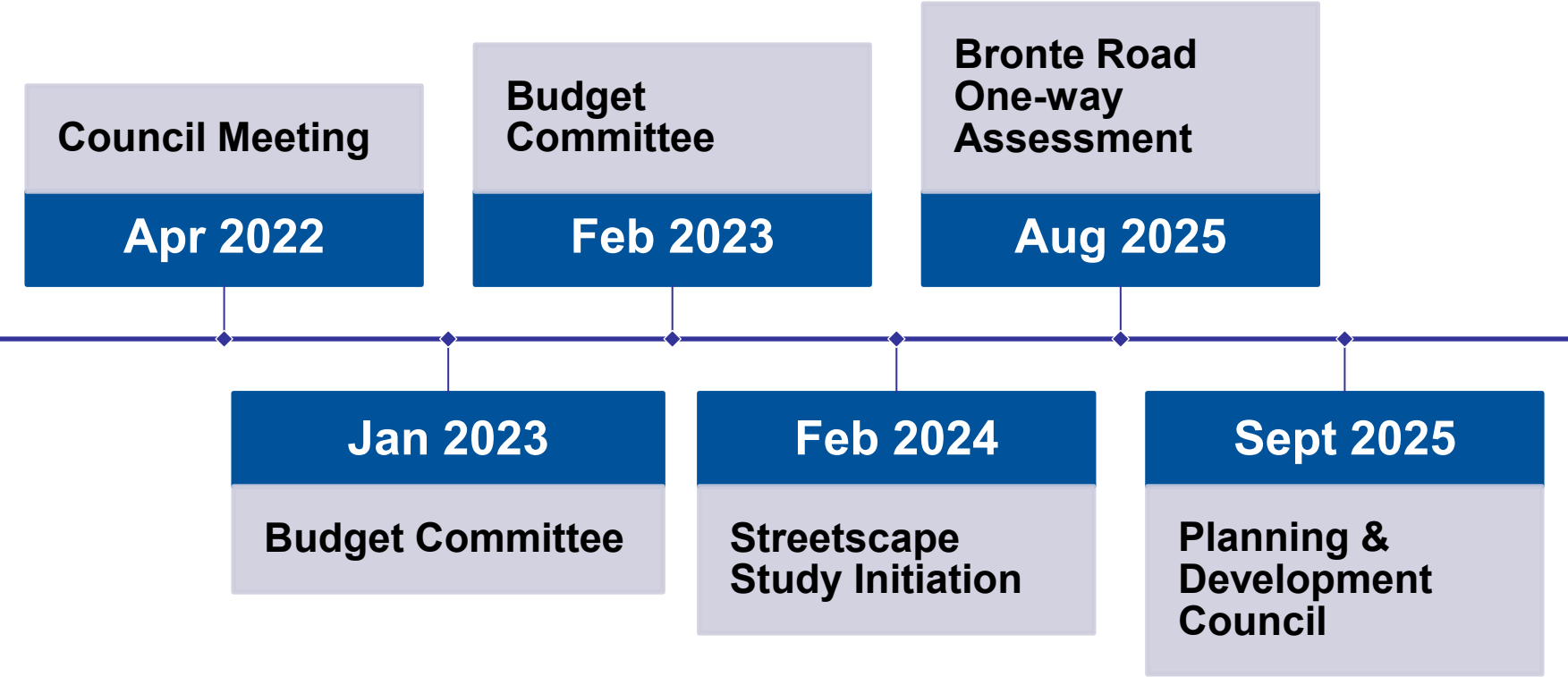
Bronte Village Streetscape Study  
Kerr Village Streetscape Study

September 22, 2025

# Agenda

- Chronology
- Recommendations
- Study Area
- Foundational Policy and Principles
- Public Engagement
- Public Real Framework
- Streetscape Design Plan
- Implementation

# Chronology



# Recommendations

- That the findings of the *Bronte Village Streetscape Study and Kerr Village Streetscape Study*, as detailed in the staff report dated September 9, 2025, be endorsed; and
- That Budget Committee consider the future capital costs of the Bronte Village and Kerr Village Streetscape Studies through the 2026 budget process and identify street improvement priorities for the 10-year capital forecast, and,
- That the Bronte Village and Kerr Village Streetscape Studies be implemented through the review and approval of planning and development applications within the Growth Areas, and through the detailed engineering design and construction of subject streets

# Study Areas

Kerr Village



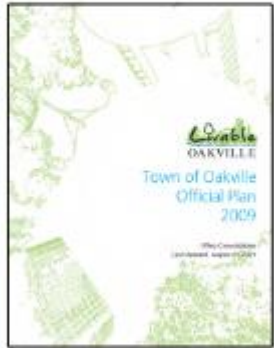
Bronte Village



# Foundational Policy and Studies

○ 2009

## Official Plan



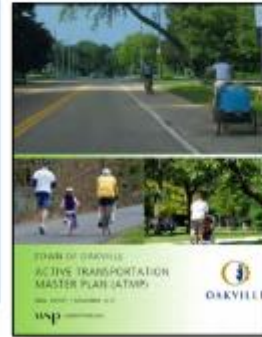
○ 2014

## Livable by Design Urban Design Manual



○ 2017

## Active Transportation Master Plan



○ 2018

## Transportation Master Plan



# Foundational Policy and Studies

○ 2019

**Livable by Design  
Urban Design Manual  
(Part B): Urban Design  
Direction for Bronte  
Village Growth Area**



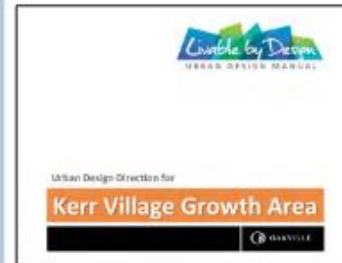
○ 2015

**Downtown  
Transportation and  
Streetscape Study**



○ 2019

**Livable by Design  
Urban Design Manual  
(Part B): Urban Design  
Direction for Kerr  
Village Growth Area**



○ 2019

**Kerr Street Grade  
Separation**

# Guiding Principles



Create Complete Streets



Accessible for All



Context Specific Design



Vibrant and Engaging Public Realm



Green Infrastructure

# Engagement

- Interest Holder Interviews
- June 3, 2024

- Public Workshop 1
- June 27, 2024

- Public Workshop 2
- Sept & Oct 2024

- Public Workshop 3 (Bronte)
- June 25, 2025

- Presentation to Council
- Sept 22, 2025



# BRONTE VILLAGE

## Public Realm Framework / Streetscape Design



# Public Realm Framework

## Legend

-  Public Green Space/  
Open Space
-  Main Street
-  Residential Street
-  Waterfront Drive
-  Mid-Block Pedestrian  
Connection
-  Gateway

## Character Areas

-  1 Main Street District
-  2 River Residential
-  3 Sovereign Street
-  4 Marine Drive
-  5 Waterfront
-  6 West Harbour



# Public Realm Framework

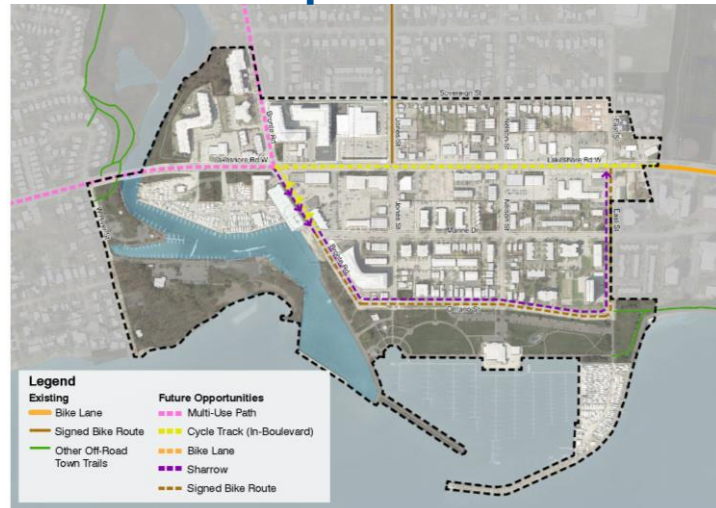
## Character Areas



## Streets



## Active Transportation



## Green Space

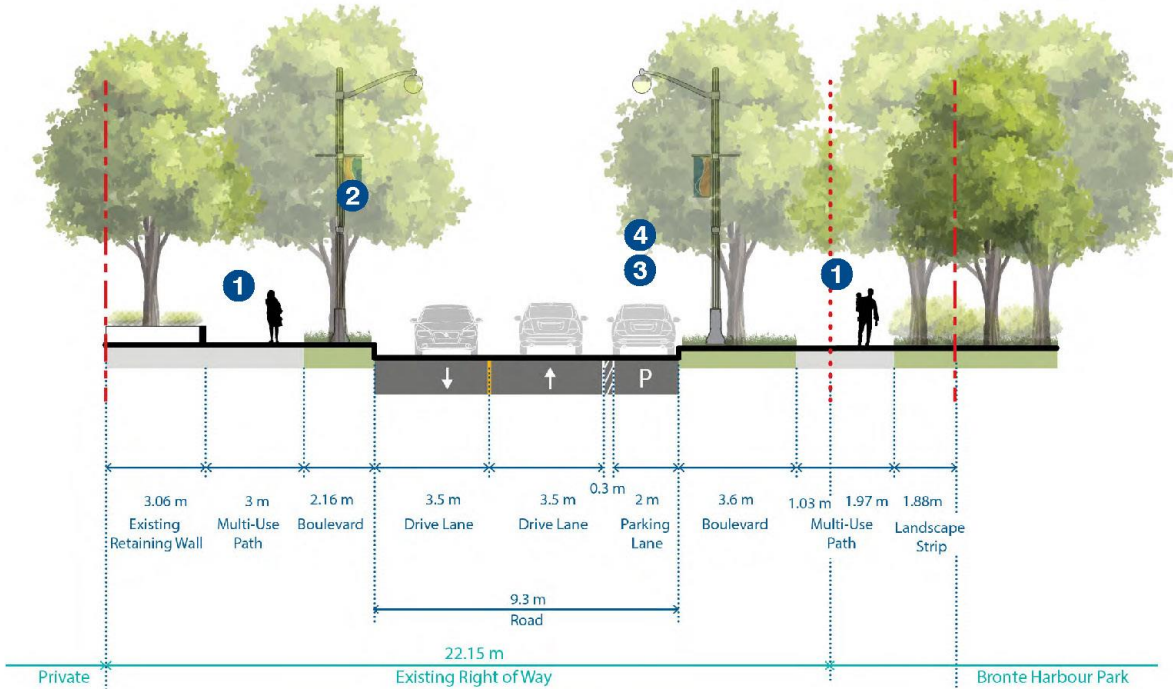


## Gateways

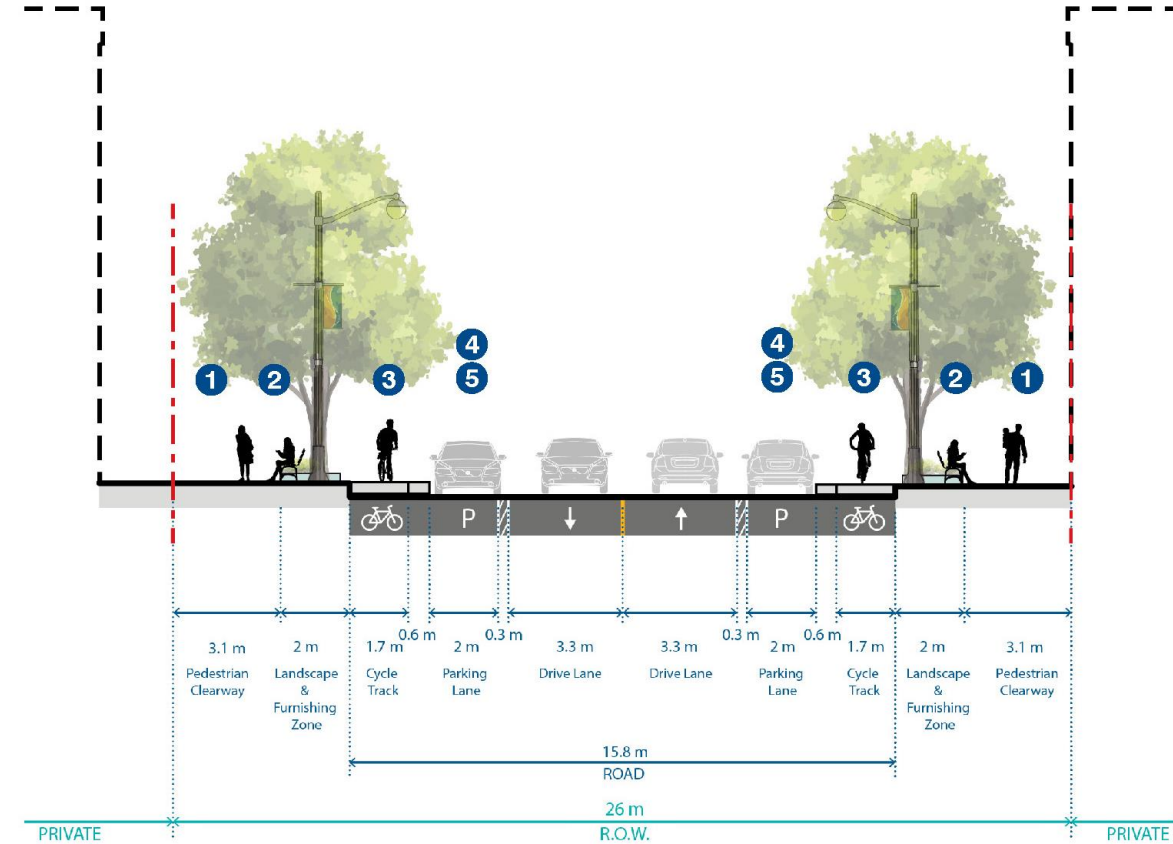


# Streetscape Design

## Lakeshore Road West – Typical Cross Sections



West River Street to Bronte Road



Bronte Road to East Street

# Streetscape Design

## Lakeshore Road West



### West River Street to Bronte Road

# Streetscape Design Lakeshore Road West

Pedestrian Clearway (3.1m)

Landscape / Furnishings Zone (2.0m)

Cycle Track (3.0m)

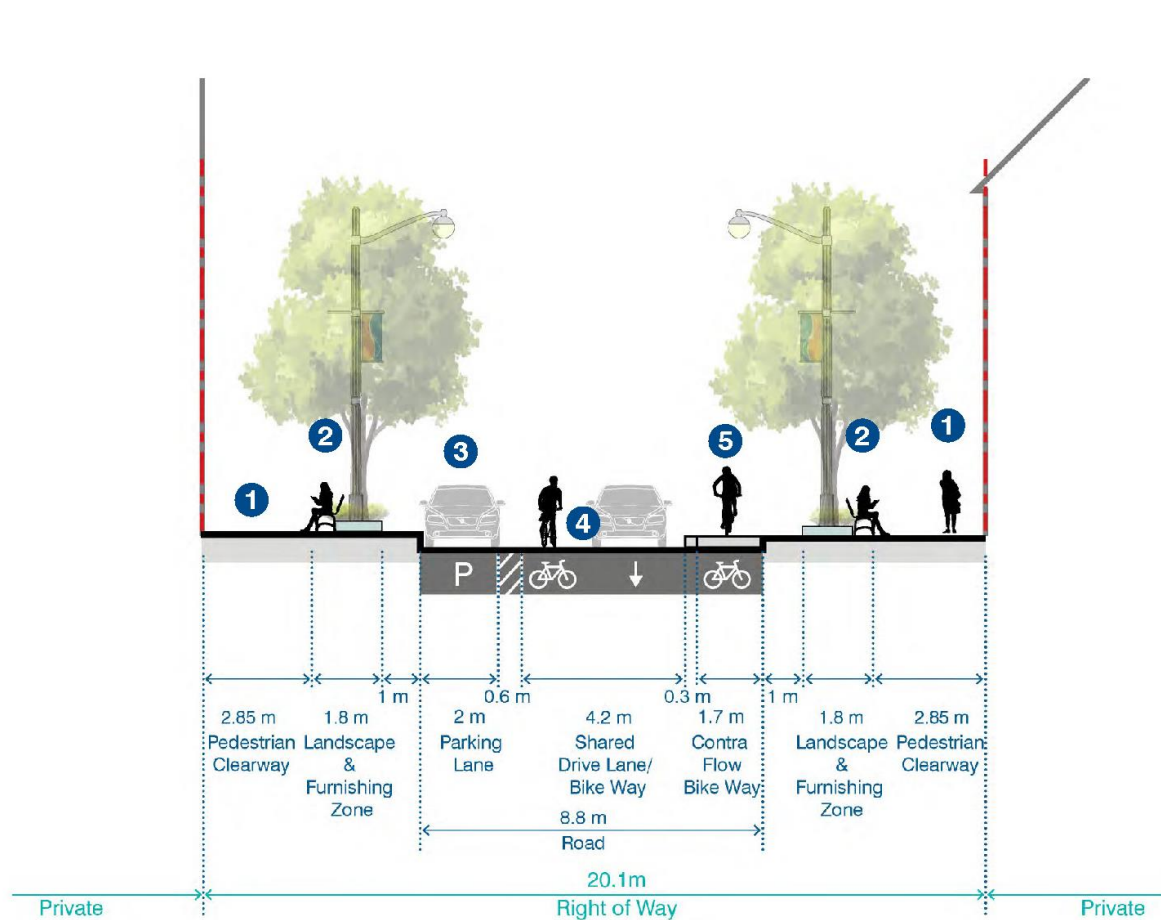
On-street parking (2.3m, includes buffer)



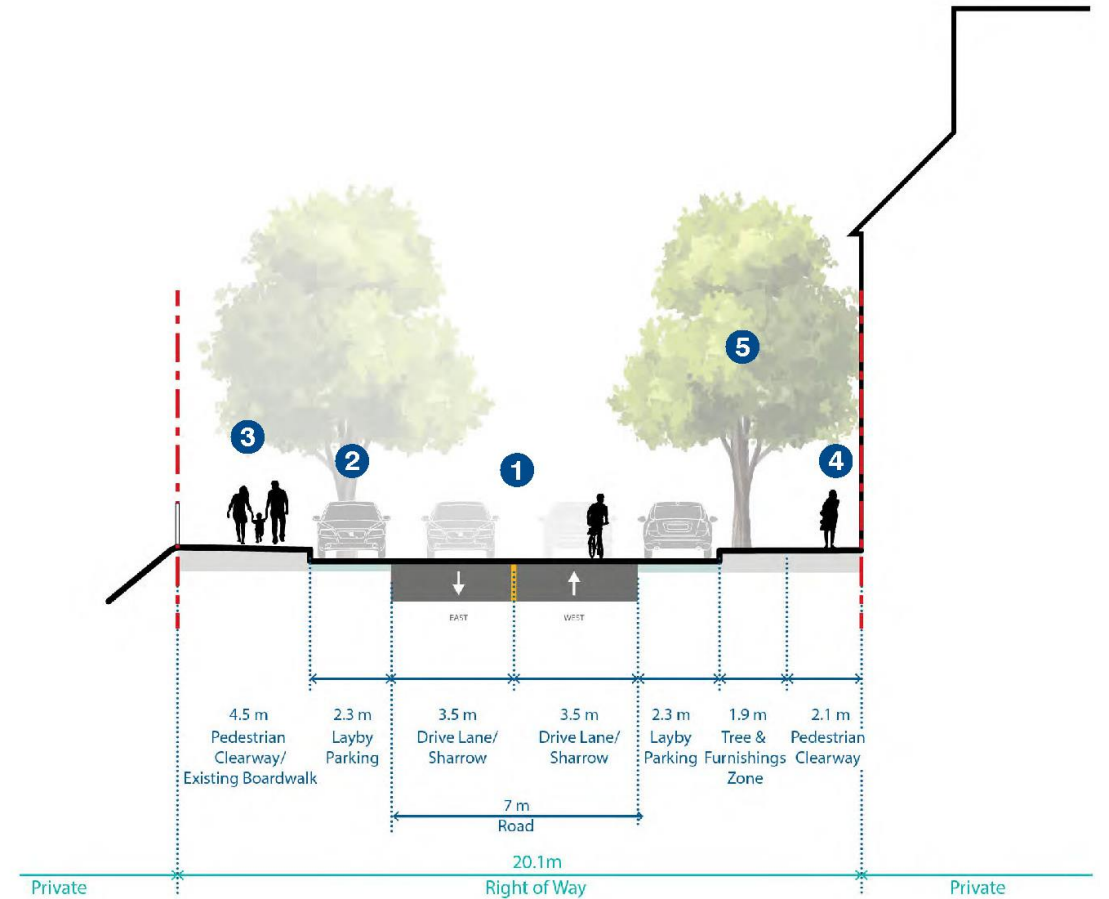
## Bronte Road to Jones Street

# Streetscape Design

## Bronte Road – Typical Cross Sections



Lakeshore Road West to Marine Drive



Marine Drive to Ontario Street

# Streetscape Design

## Bronte Road -Lakeshore Road West to Marine Drive



Pedestrian Clearway (3.1m)

Landscape / Furnishings Zone (2.0m)

Cycle Track (3.0m)

On-street parking (2.3m, includes buffer)

# Streetscape Design

## Bronte Road - Marine Drive to Ontario Street



# Streetscape Elements



## Waste / Recycling Receptacles

As per Downtown Oakville approved standard (Victor Stanley SDC36)

## Bicycle Lock-up

As per Downtown Oakville approved standard (Maglin MRB200)

## Trees in Open Planters

Planter areas to be delineated by 100mm - 150mm concrete curb



## Intersection and Lay-by Parking Paving

Concrete Unit Paver Herringbone Pattern (Unilock Promenade Paver)



## Trees Planted in Paving with Tree Grate

Design / product to match existing tree grates



## Curb Bump-out

Bump-out areas will extend approximately 2.5 metres (the depth of the lay-by parking zone) from the existing curb, at the ends of block.



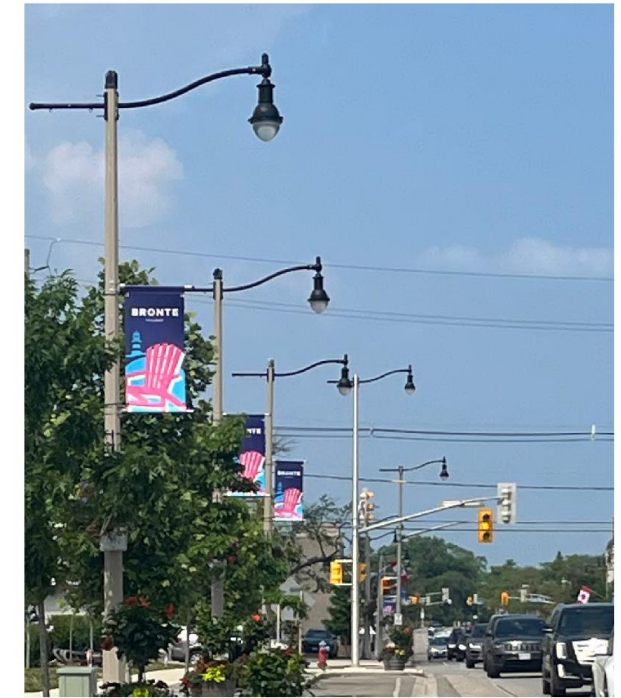
## Furnishings / Tree Zone Paving

Similar to existing condition along Lakeshore Road West, between Bronte Road and Jones Street



## Benches

Wood Bench with back and armrests (Maglin MLB1200 Backed bench)

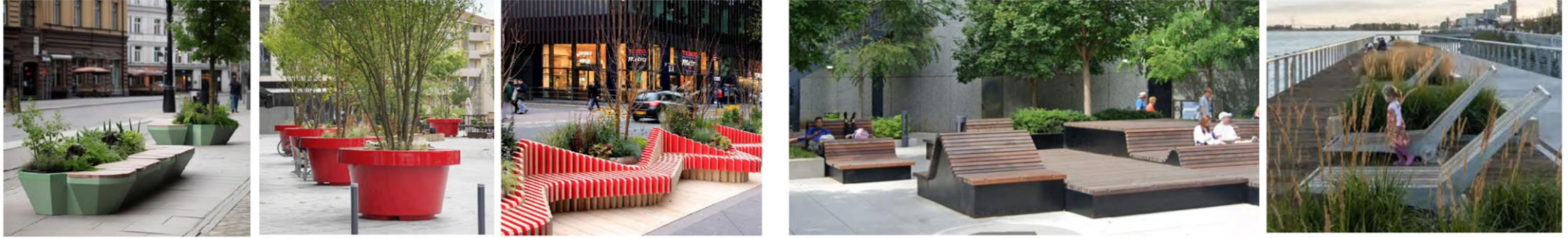


## Light Poles and Luminaires

Existing lighting to be maintained

# Special Moments

Furniture



Paving



Wayfinding



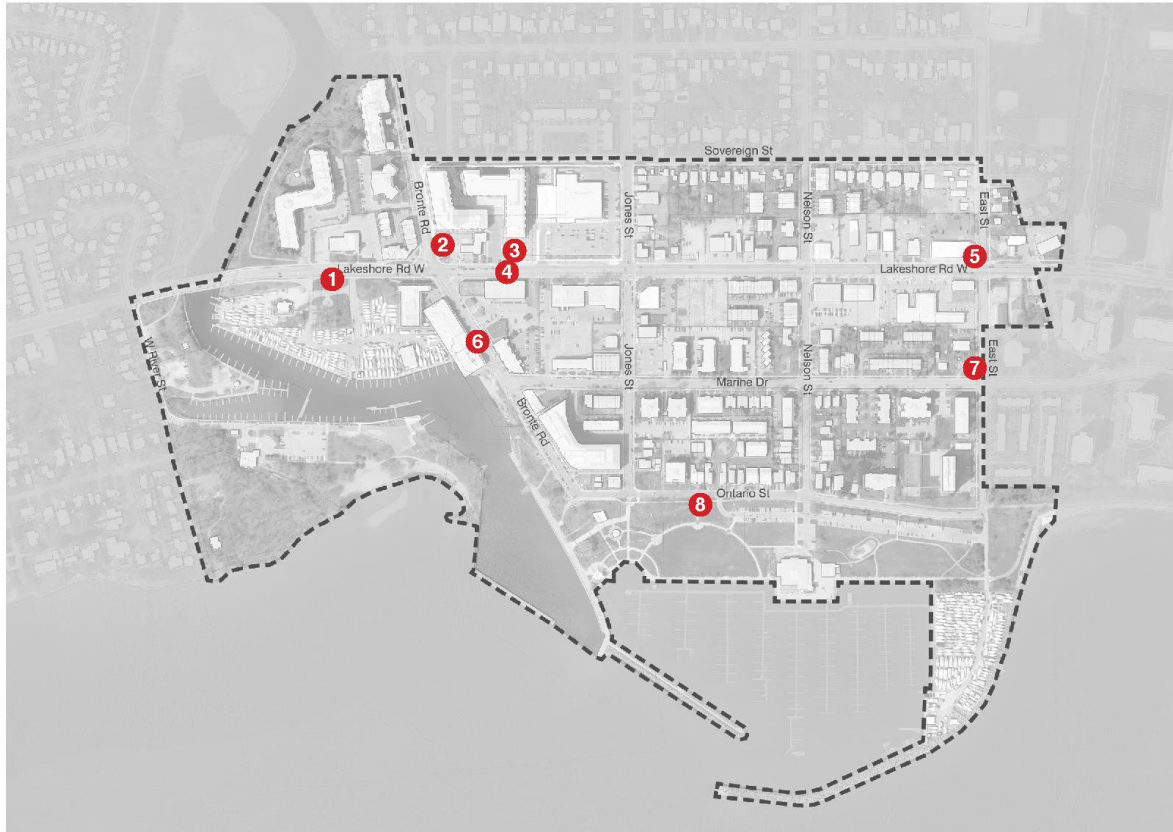
Patios



Lighting



# Future Consideration



## 1 Lakeshore Road West Open Spaces

To reinforce the gateway, and to better integrate the streetscape with the adjacent open spaces, from Bronte Creek bridge to Bronte Road, consider:

- Planting the adjacent open spaces with a continuous swathe of native ornamental shrubs and small trees along the sidewalk; and
- Providing walkways connections to Chris Volkes Memorial Park.



## 2 Bronte Gore Park

To provide an urban park space that supports a variety of passive park uses and enhances Bronte Village as a destination, consider:

- Walkways connecting to Lakeshore Road West and Bronte Road;
- Raised planters to define a central paved space, planted with shrubs, perennials, and containing any existing trees;
- Benches incorporated into the raised planters (to maximize usable/circulation space);
- Relocation of the existing cairn to the central paved space, as a focal point; and,
- Public art.

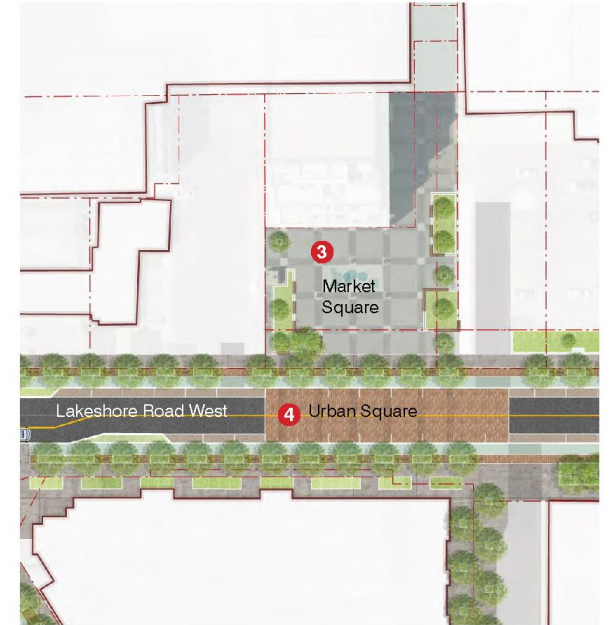
# Future Consideration



## 3 Market Square

To rebalance the amount of paved area with landscape area while also creating more visual interest and additional places for seating, consider:

- Raised planters around the edges of the space, planted with shrubs, perennials and trees;
- Benches incorporated into the raised planters (to maximize usable/circulation space);
- A shade structure / pergola along the west side;
- A ceremonial/holiday tree;
- A small area of grass / lawn; and,
- Public art.



## 4 Urban Square (Flex Street)

Lakeshore Road West, in front of Market Square, is envisioned to be designed as a flex street, bridging the mid-block connections on the north and south sides of the street, and providing the opportunity to extend the look and function of Market Square to support special events.

Key design elements to consider:

- Flush/rolled curbs along the north and south;
- Decorative traffic bollards along these curbs; and,
- Decorative paving from curb to curb coordinated in design with the streetscape and the square.

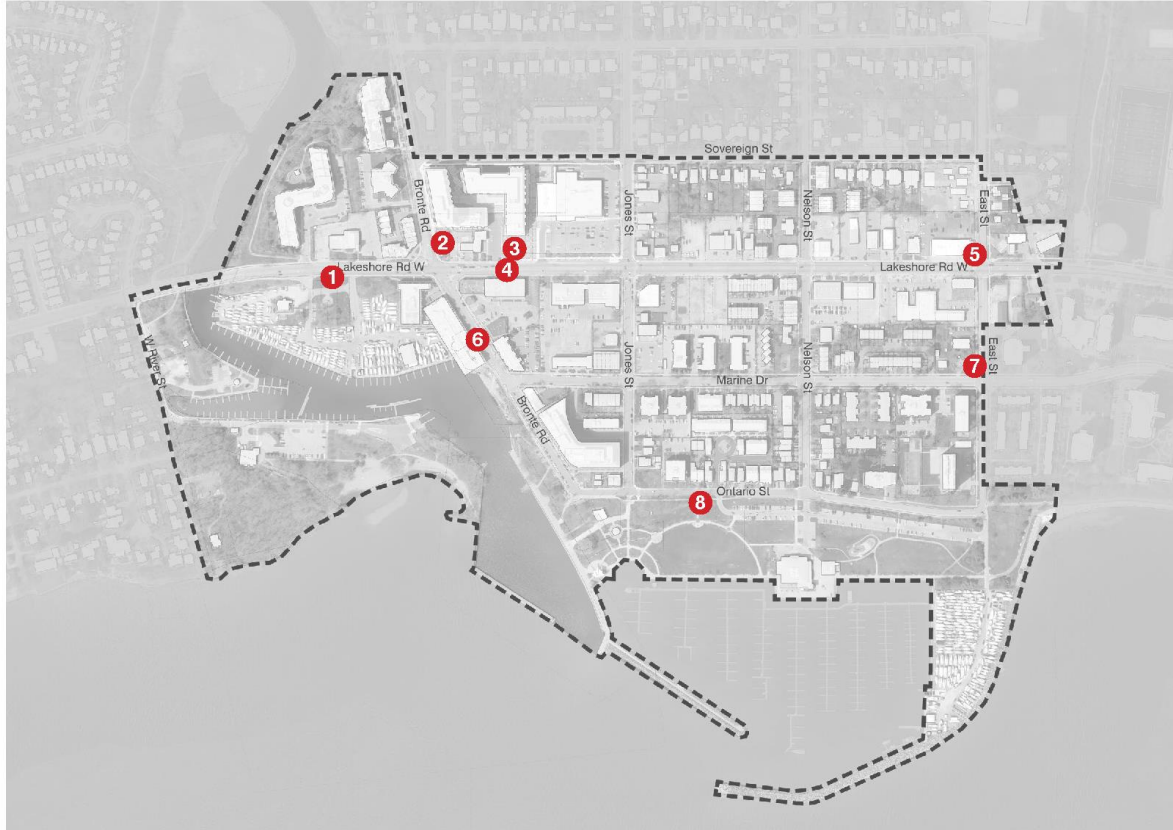


## 5 Lakeshore Road W / East St

The area centred around Lakeshore Road West and East Street is an identified gateway. Streetscape design on all four corners, should be coordinated. An opportunity exists to enhance the gateway by creating a public space at the northwest corner with:

- Coordinated sidewalk paving;
- Seating;
- Landscaping;
- Signage; and,
- Public art.

# Future Consideration

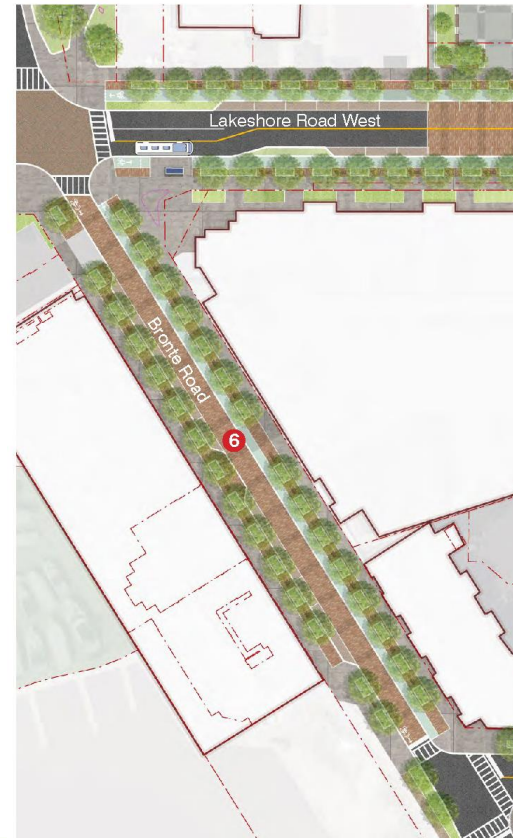


## 6 Bronte Road (Flex Street)

The one-way portion of Bronte Road, from Lakeshore Road West to Marine Drive provides the opportunity to design a flex street that extends the look and function of the street from building face to building face, to support special events.

Key design elements to consider:

- Flush/rolled curbs along the north and south;
- Decorative traffic bollards along these curbs; and,
- Decorative paving from curb to curb coordinated in design with the streetscape and the square.

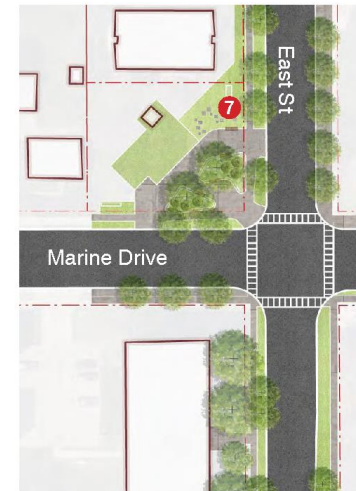


## 7 Marine Dr / East St Pocket Park

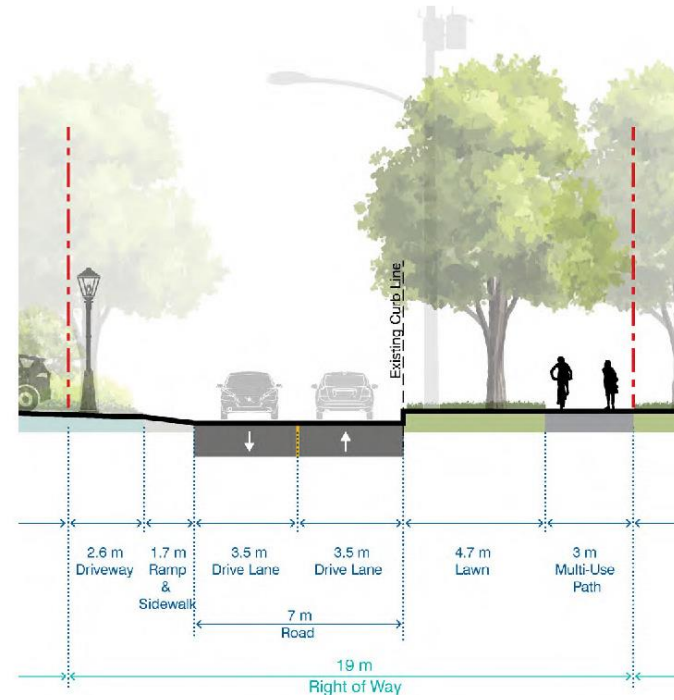
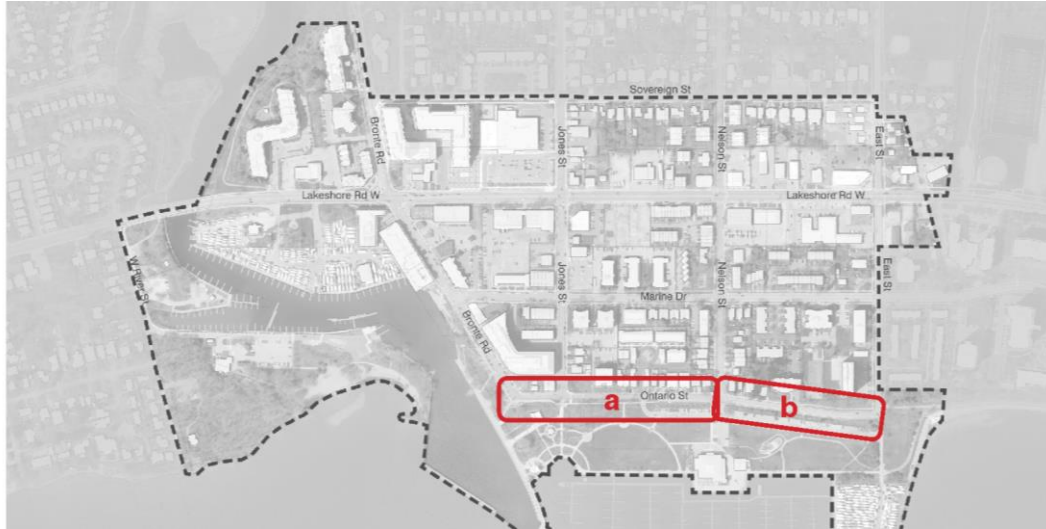
Similar to the existing parkette located at Nelson Street and Marine Drive, the small open space located at East Street and Marine Drive presents an opportunity to provide usable open space within the neighbourhood, while maintaining access to the (public utility).

Key design elements to consider

- Driveway paved with decorative concrete paving;
- Seating;
- Landscaping; and,
- New fence enclosure and/or mural painted on existing wood enclosure; and,
- Public art.



# Future Consideration



8a - Ontario Street, Bronte Road to Nelson Street

# KERR VILLAGE

## Public Realm Framework / Streetscape Design



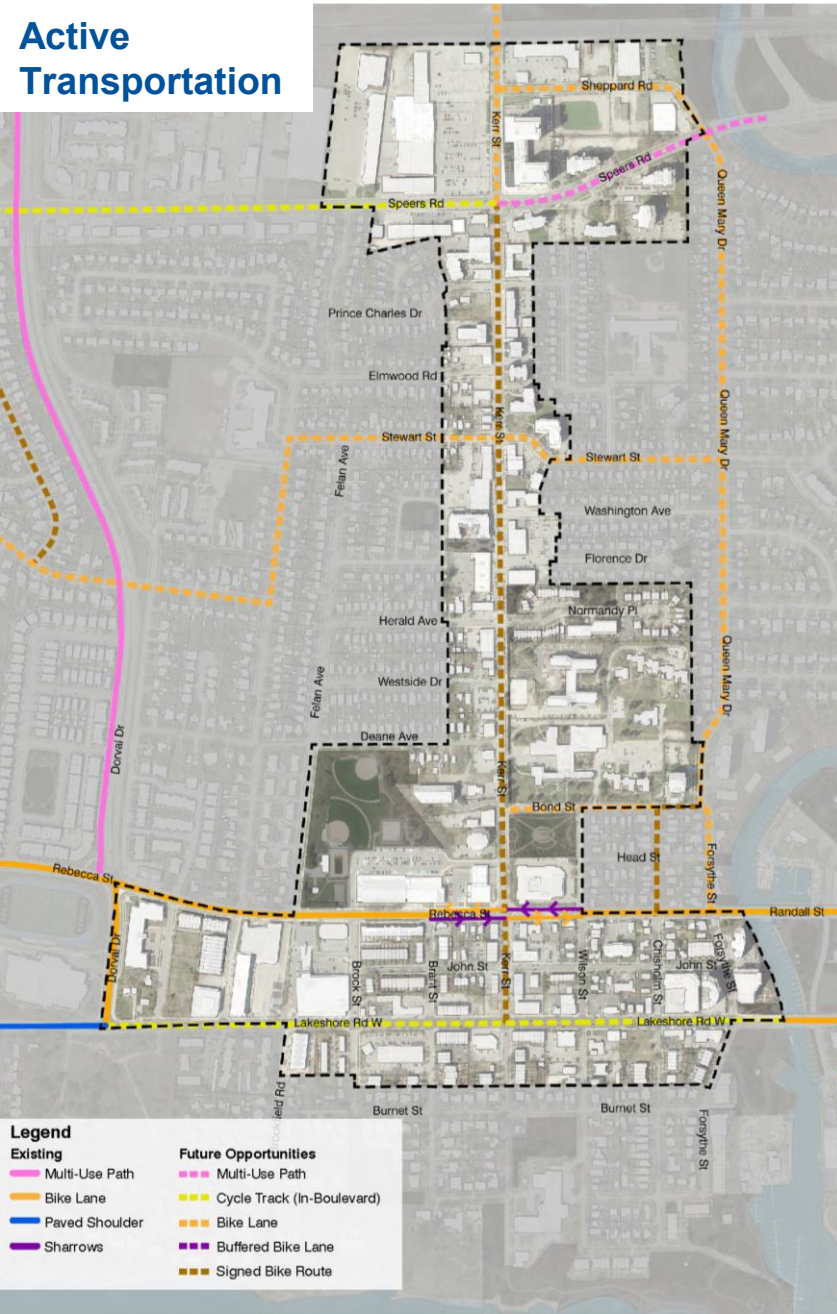
# Public Realm Framework





# Public Realm Framework

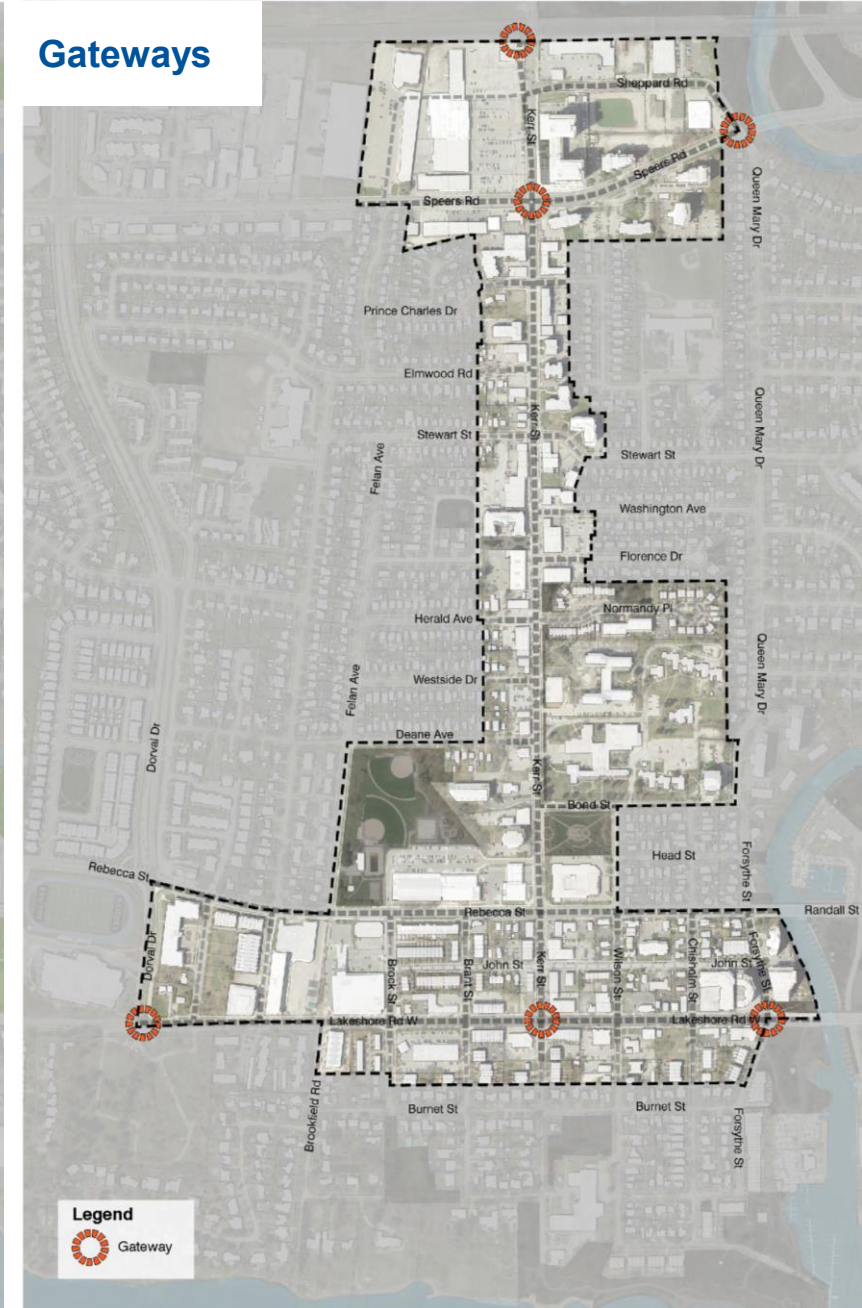
## Active Transportation



## Green Space



## Gateways

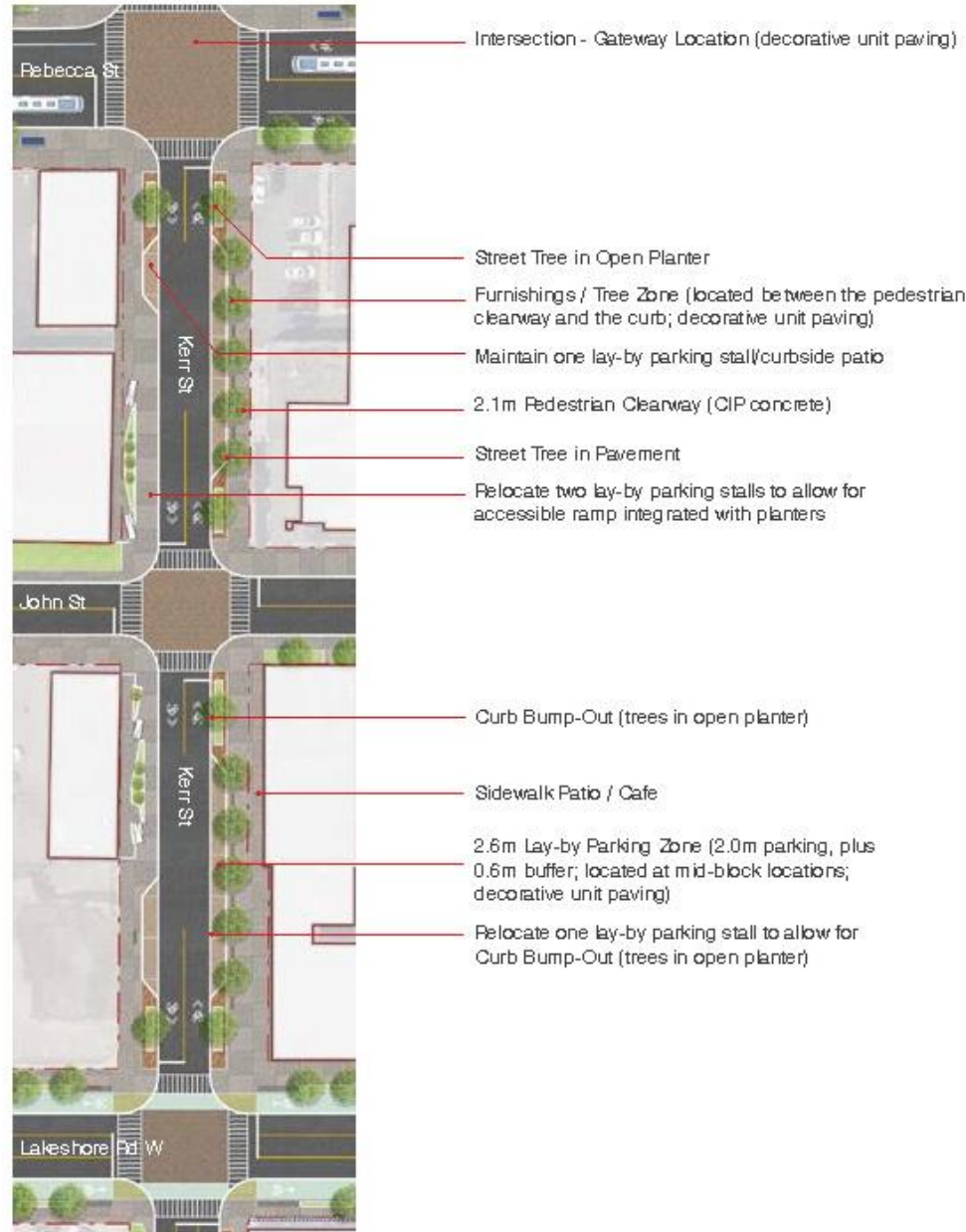




# Streetscape Design

## Kerr Street

### A - Lakeshore Road West to Rebecca Street



### B - Rebecca Street to Bond Street

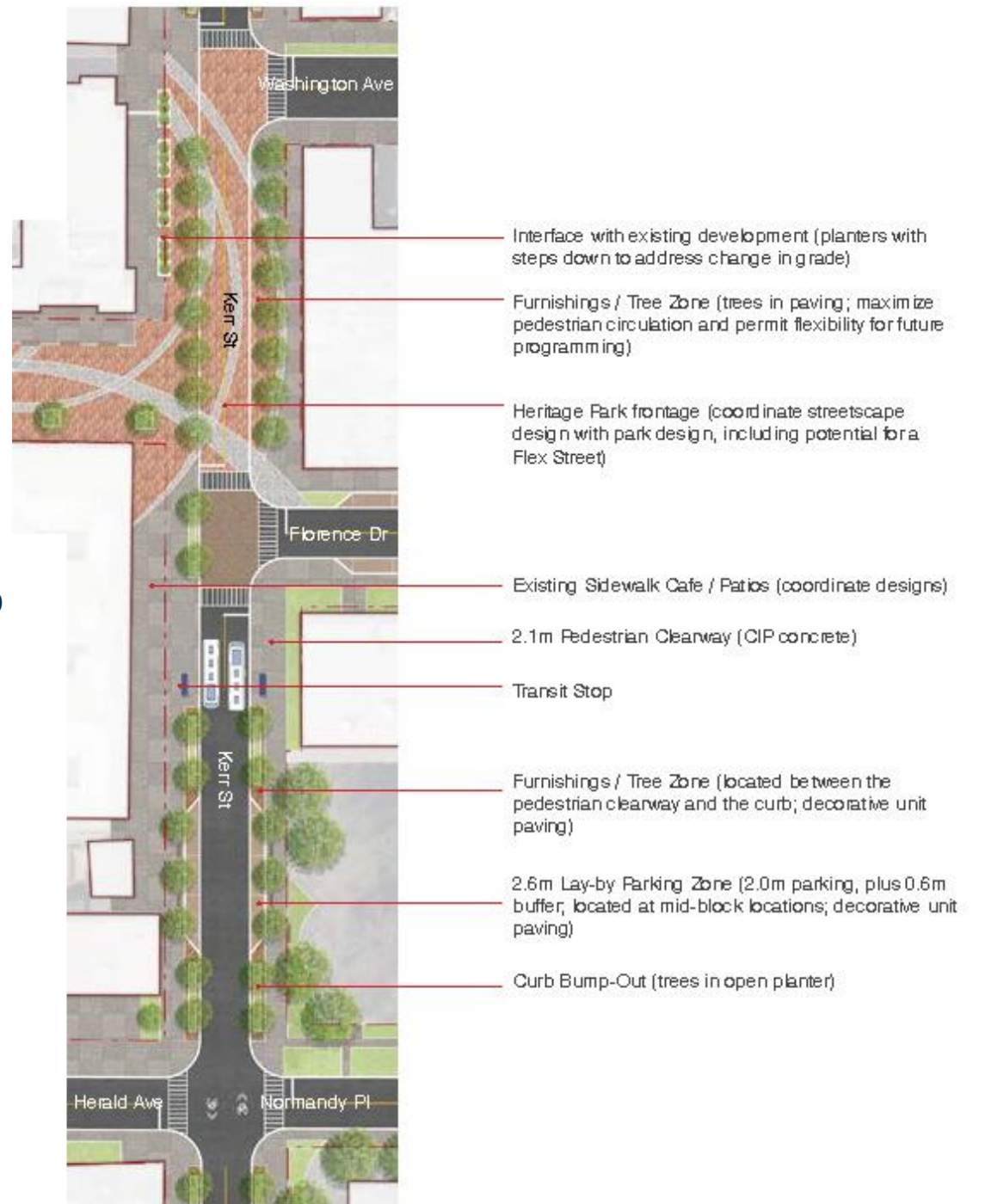


# Streetscape Design

## Kerr Street



### E – Herald Avenue to Washington Avenue





# Streetscape Design

## Lakeshore Road West



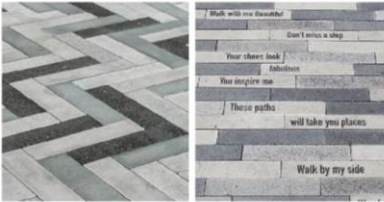
### C – Brock Street to Kerr Street



### D – Kerr Street to Chisholm Street

# Streetscape Elements

## Kerr Street

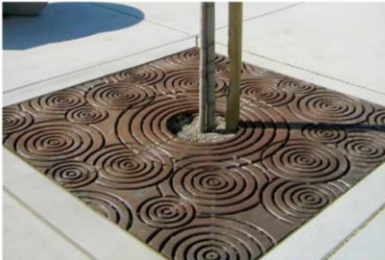


**Lay-by Parking & Intersection Paving**  
Concrete Unit Paver Herringbone Pattern, installed on concrete base (Unlock Promenade Paver)

**Furnishings Zone Paving**  
Concrete Unit Paver Stacked Bond Pattern (Unlock Promenade Paver)



**Bench**  
Wood bench with back and armrests (Equiparc EP 1600-5)



**Trees Planted in Paving with Tree Grate**  
(Ironsmith 48' x 48' Natural Finish)

## Lakeshore Road West



Bench: Maglin MLB310



Granite Paver



**Trees in Open Planter**  
Planter areas to be delineated by 100mm - 150mm concrete curb



**Curb Bump-out**  
Bump-out areas will extend approximately 2.5 metres (the depth of the lay-by parking zone) from the existing curb, at the ends of block.



**Waste / Recycling Receptacles**  
As per Downtown Oakville approved standard (Victor Stanley SDC36)



**Bicycle Lock-up**  
As per Downtown Oakville approved standard (Maglin MFB200)



Trees in Open Planter



Waste/Recycling: Victor Stanley



Bicycle Lock up: Maglin



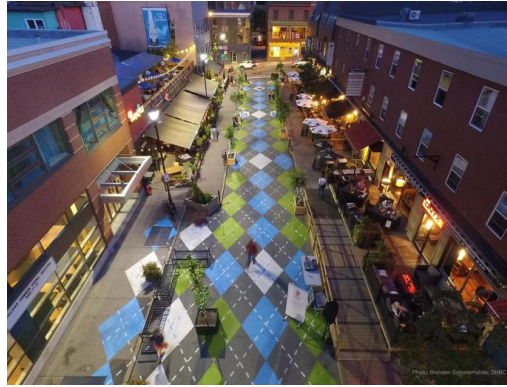
Lighting

# Special Moments



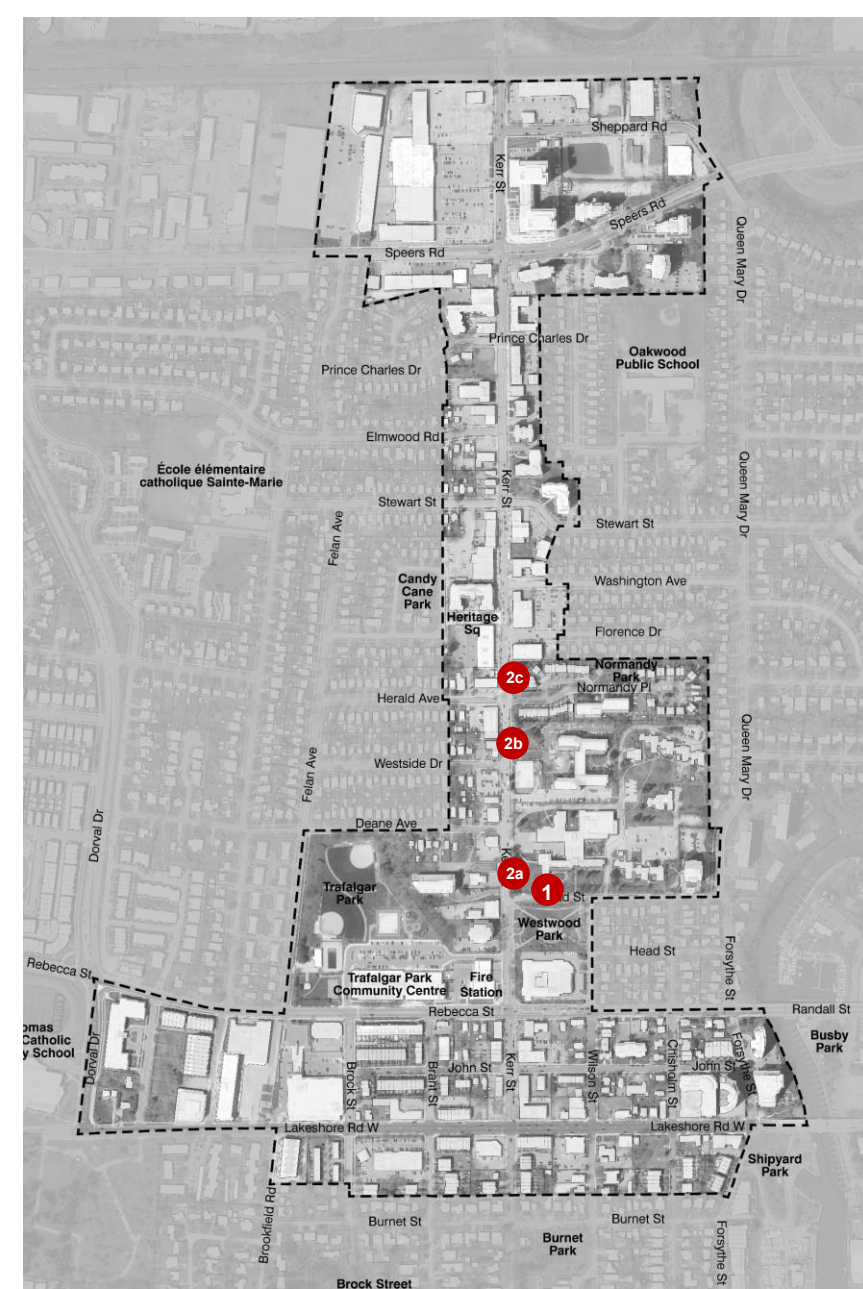
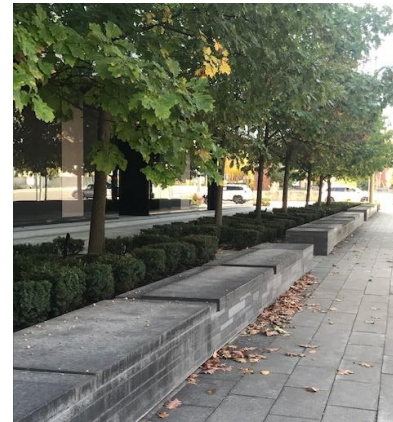
# Future Considerations

## 1. Bond Street Flex Street Design



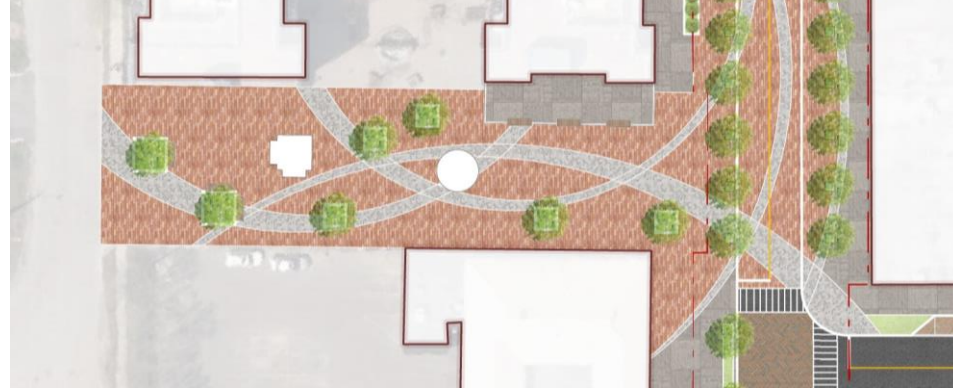
## 2. Enhanced Streetscape / Pedestrian Amenities

- ErinoakKids
- Halton Region Site
- Normandy Place



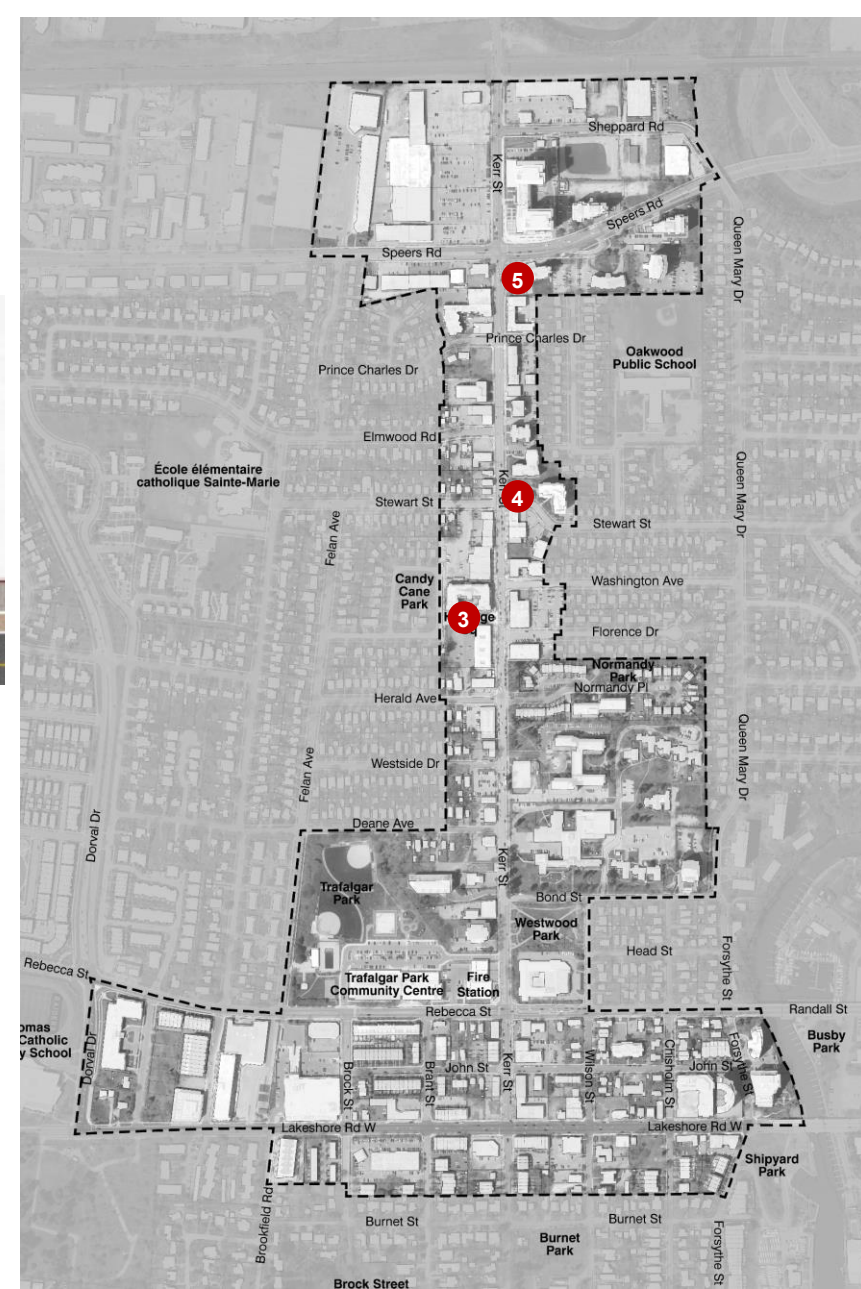
# Future Considerations

## 3. Heritage Square



## 4. Northeast corner of Kerr St / Stewart St

## 5. Southeast corner of Kerr St / Speers Rd



# Implementation

- Next Steps
  - Detailed Design and Construction
  - Implementation Plan
    - Transportation & Engineering to take the lead
    - Planning & Development to maintain design intent
    - Capital Budget
    - Asset Management Plan

