

Towne Square Design

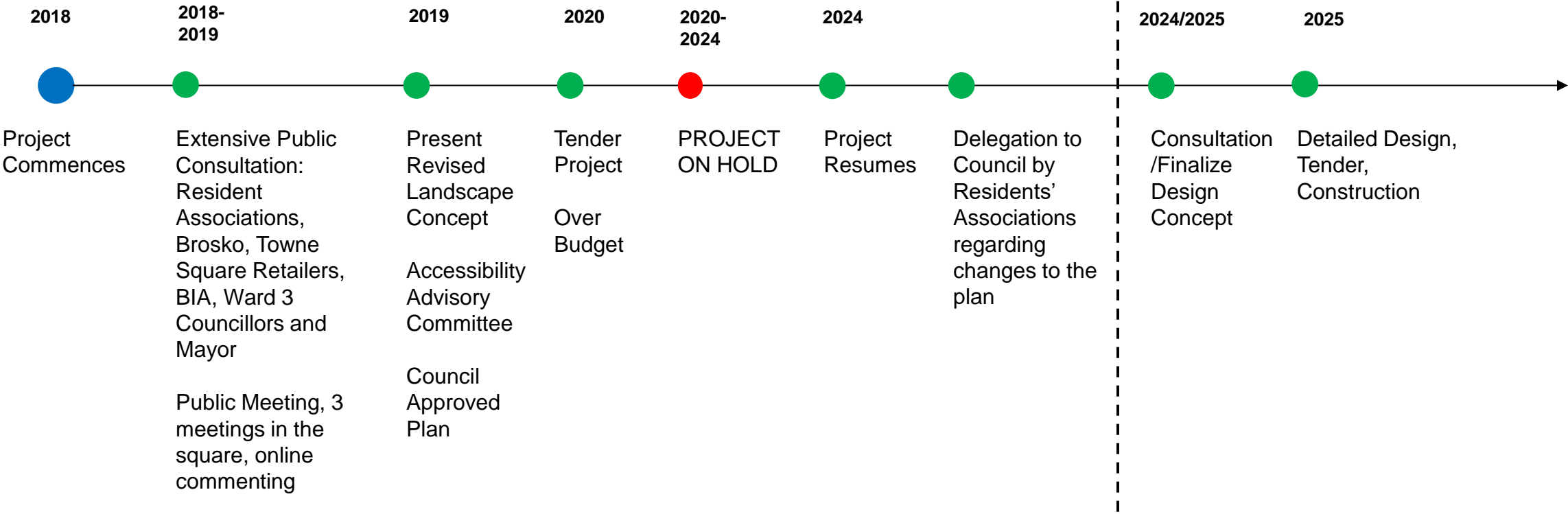
Accessibility Advisory Committee

Council Chambers
March 20, 2025
4:20-5:20 p.m.

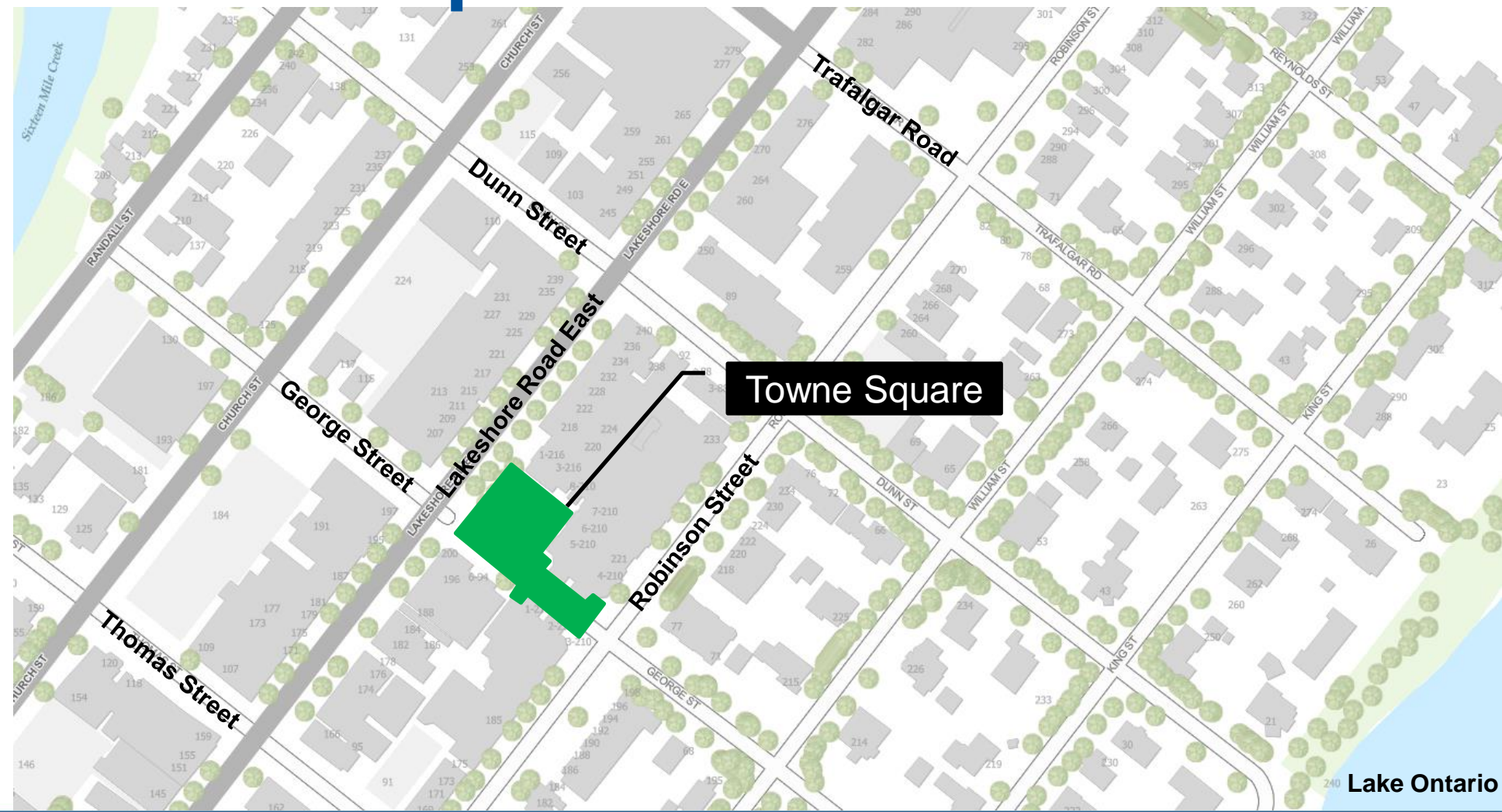
Agenda

1. Background/Consultation
2. Delegation by Residents' Associations
3. Towne Square Design Concept
4. Design & Construction Schedule
5. Accessibility Improvements
6. Discussion
7. Next Steps

Background-Project Timeline



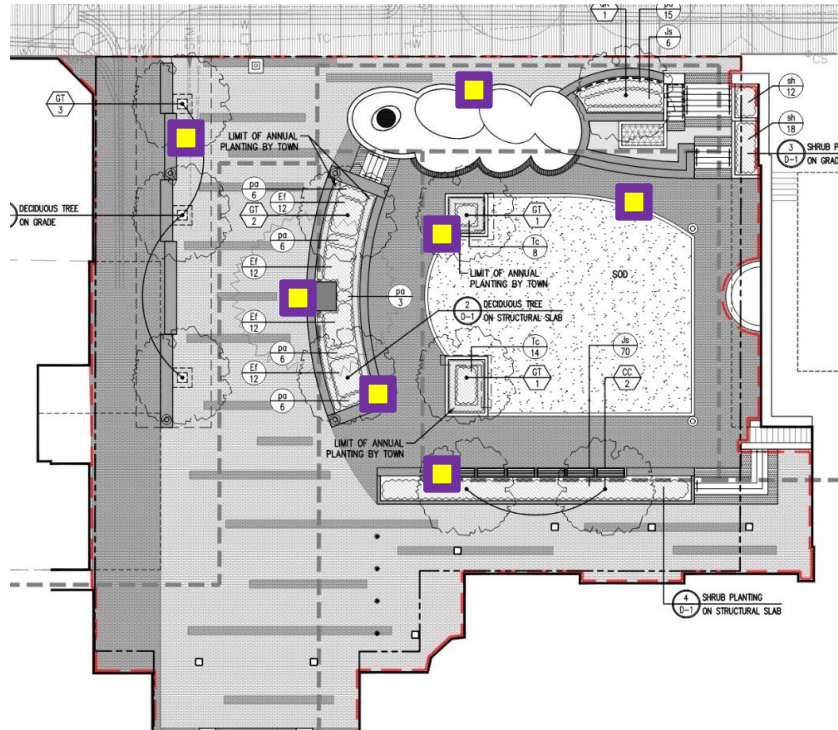
Context Map



Accessibility Standards & Guidelines

- AODA – Accessibility for Ontarians with Disabilities Act,
Accessibility standards for the Built environment
- Town of Oakville, Guidelines for Design of Accessible Facilities
- Ontario Building Code
- ASTM – American Society for Testing Materials

Towne Square Design Comparison



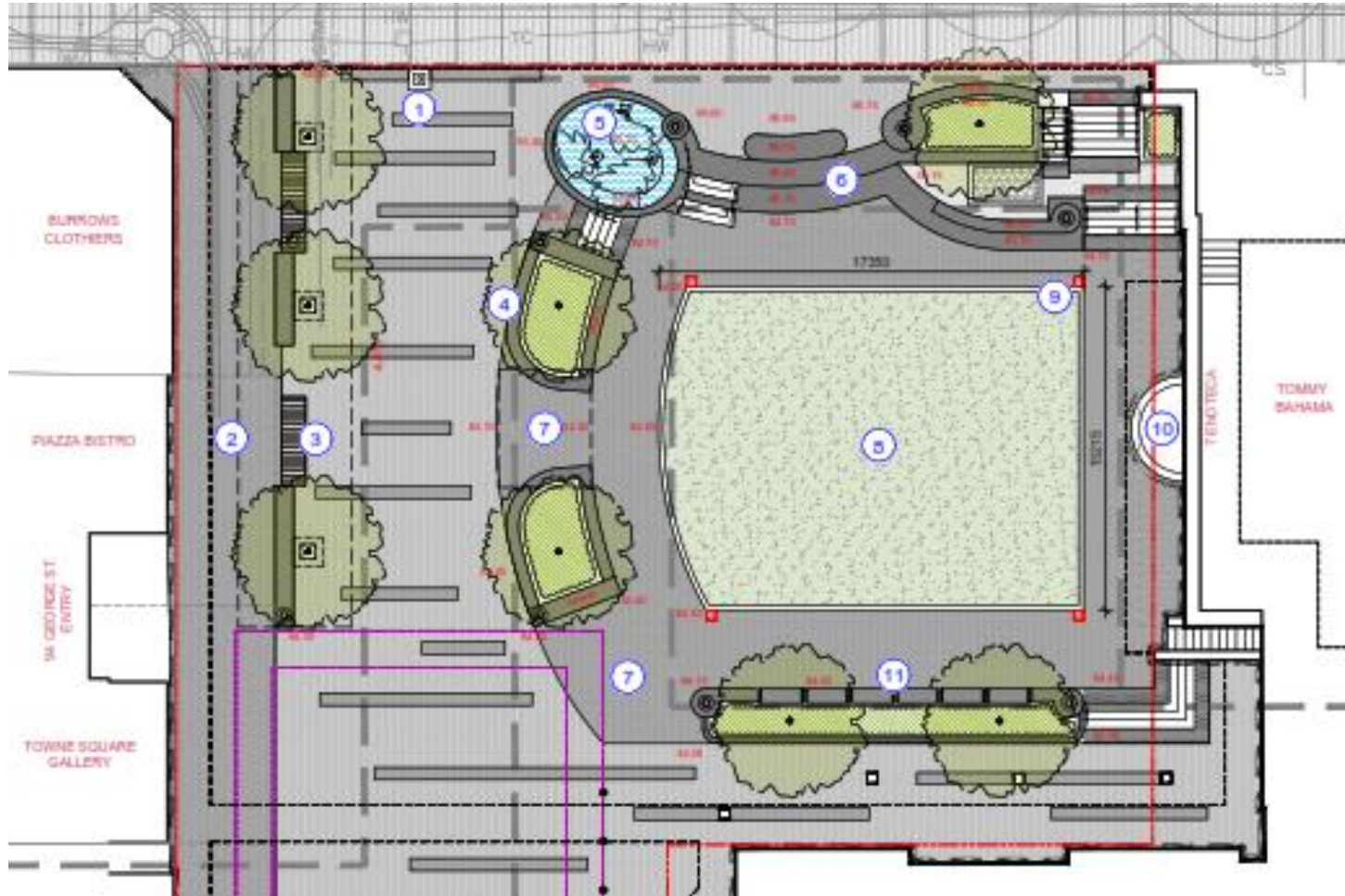
Barrier-Free Design Improvements
made to 2019 Plan in 2025

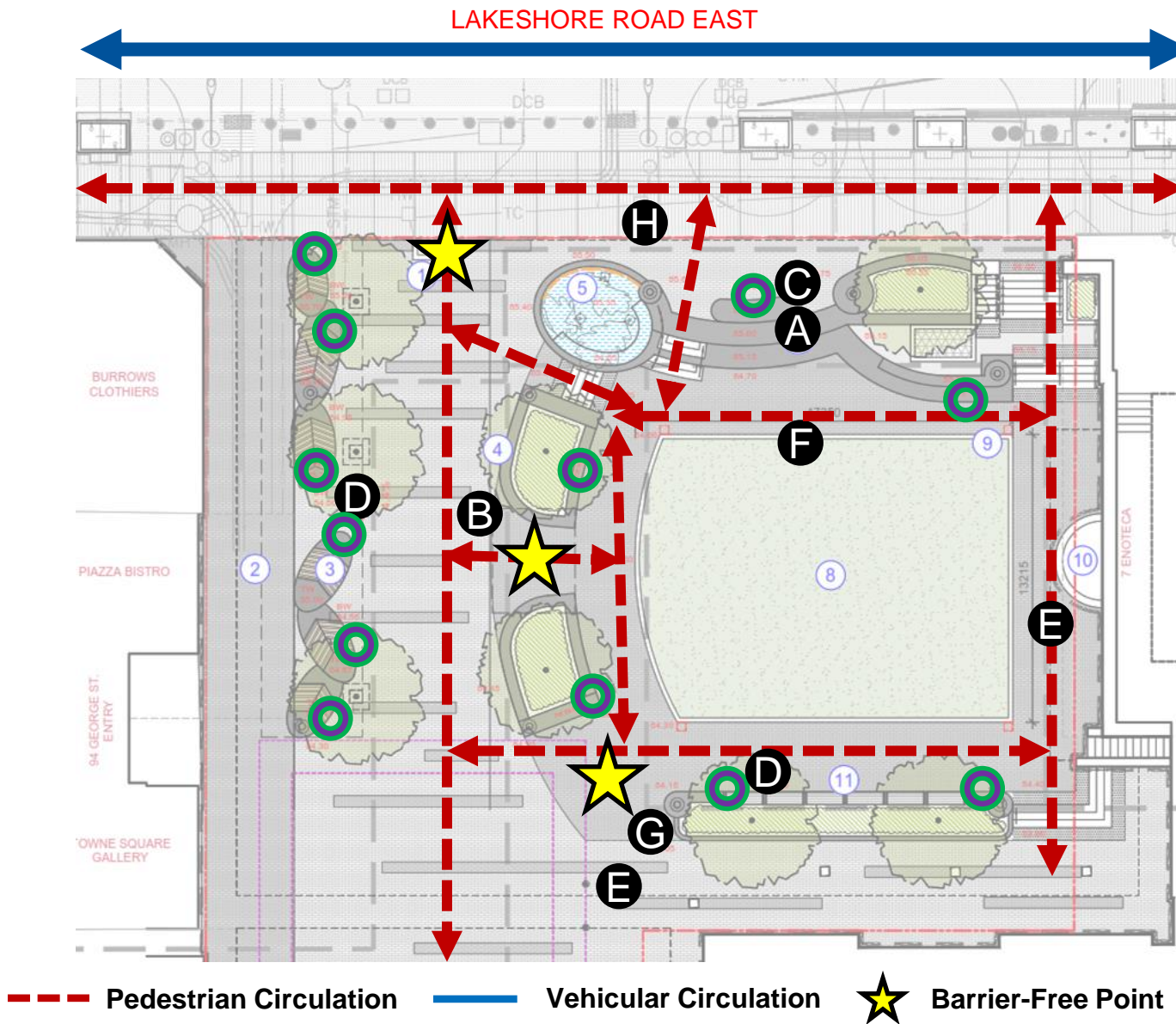


Approved Design (2019)

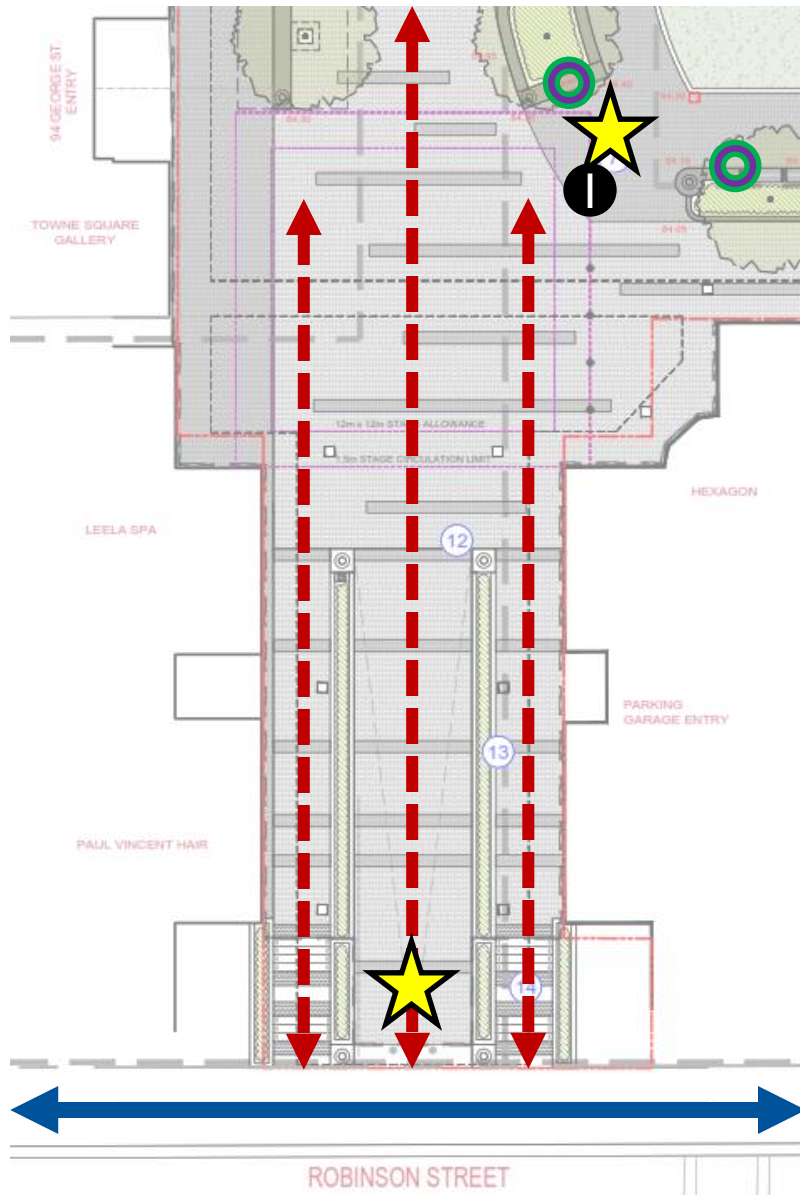
Refined Design Concept (2025)

2025 Towne Square Design

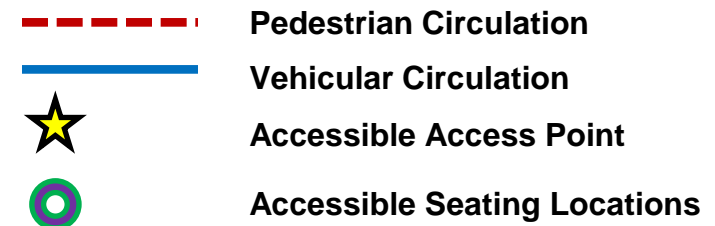


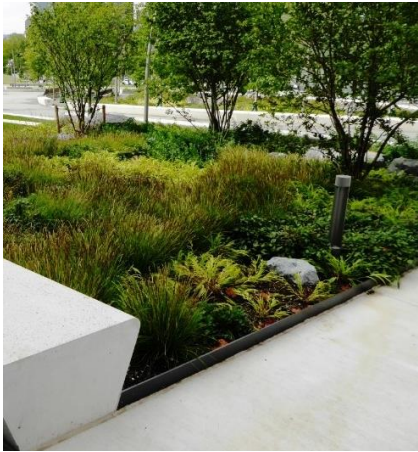
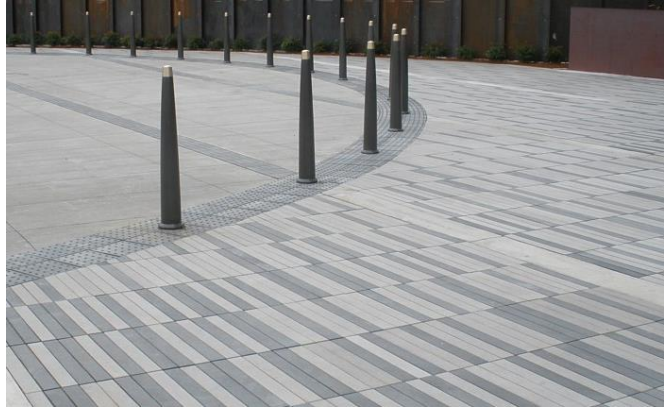


- A Tactile Domes:** detectable domes that define edge of seat walls/steps
- B Barrier-Free Point:** Removal of 'stramps' making an accessible access point between promenade and square
- C Seat/Safety Wall:** Custom accessible seating opportunity
- D Accessible Seating:** custom design site furnishings that offer accessible seating
- E Accessible Walkway:** tonal contrast and textured surface for slip-resistance and access to patios
- F Straighten Lawn:** Straighten north limit of lawn for ease in travel
- G Illumination:** provided through light standards mounted on pedestals



- I View Corridor:** expand views from the promenade into the Towne Square from Robinson Street
- J Accessible Promenade:** fully accessible from Lakeshore Road East to Robinson Street. Tonal contrast provided in paving.





Key Accessible Features

- Walkway connections between all proposed Towne Square features
- Illumination for all walkways that highlights a distinct edge
- Tonal contrast between pavers that offer direction/way-finding
- Tactile warning (stainless steel domes) on the edge of steps and seatwalls
- Removal of 'stramps' and creating an additional accessible access between the tree planters
- Seat height walls for accessible seating opportunities
- Custom leaf benches include accessible seating opportunities
- All signage to conform to AODA and Town of Oakville Universal Design Standards (OUDS).

Next Steps

1. **Heritage Advisory Committee:** March 2025
2. **Detailed Design:** February –March 2025
3. **Tender Package:** March-May 2025
4. **Project Award:** June 2025
5. **Construction:** September 2025-May 2026

Thank You