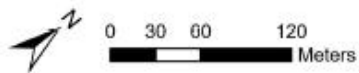
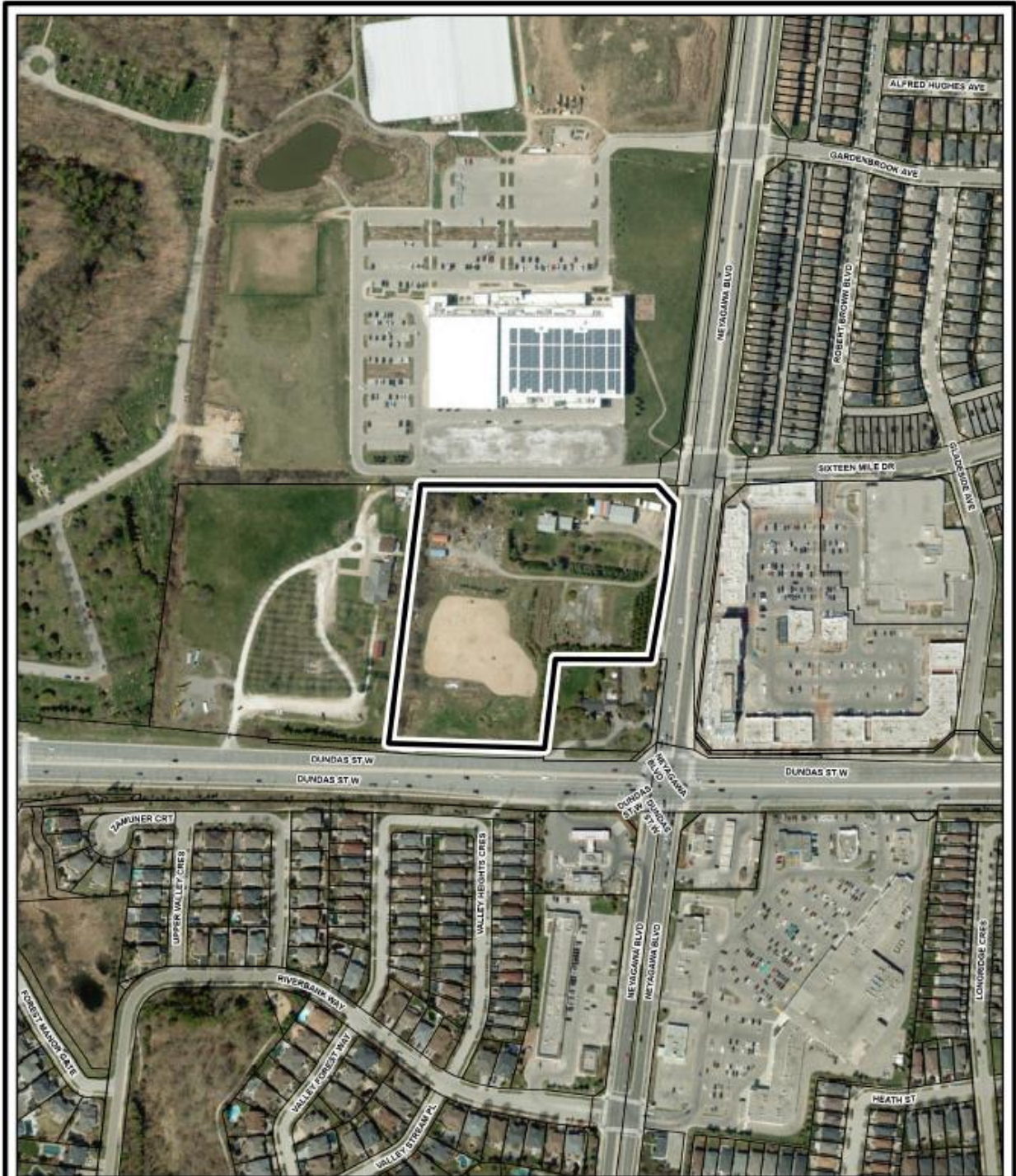


APPENDIX A: Mapping



**3056 Neyagawa Boulevard
Neatt (16 Mile Creek) Inc.**

AIR PHOTO

 **SUBJECT LANDS**

3056 Neyagawa Boulevard
OPA 1321.02, Z.1321.02 and 24T-24006/1321

Community Development Commission

© 2016 City of Mississauga, Planning Report Map(s) or 24T-24006/1321

**SECONDARY PLAN
LANDUSE**

-  Neighbourhood Area
-  Dundas Urban Core Area
-  Community Park Area
-  Cemetery Area
-  Natural Heritage System

**LIVABLE OP
(GROWTH AREA
DETAIL)**

-  LOW DENSITY RESIDENTIAL
-  COMMUNITY COMMERCIAL
-  NATURAL AREA
-  PARKS AND OPEN SPACE



0 30 60 120
Meters



SUBJECT LANDS

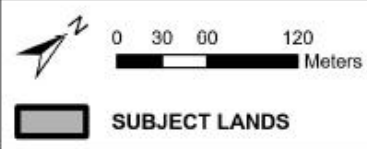
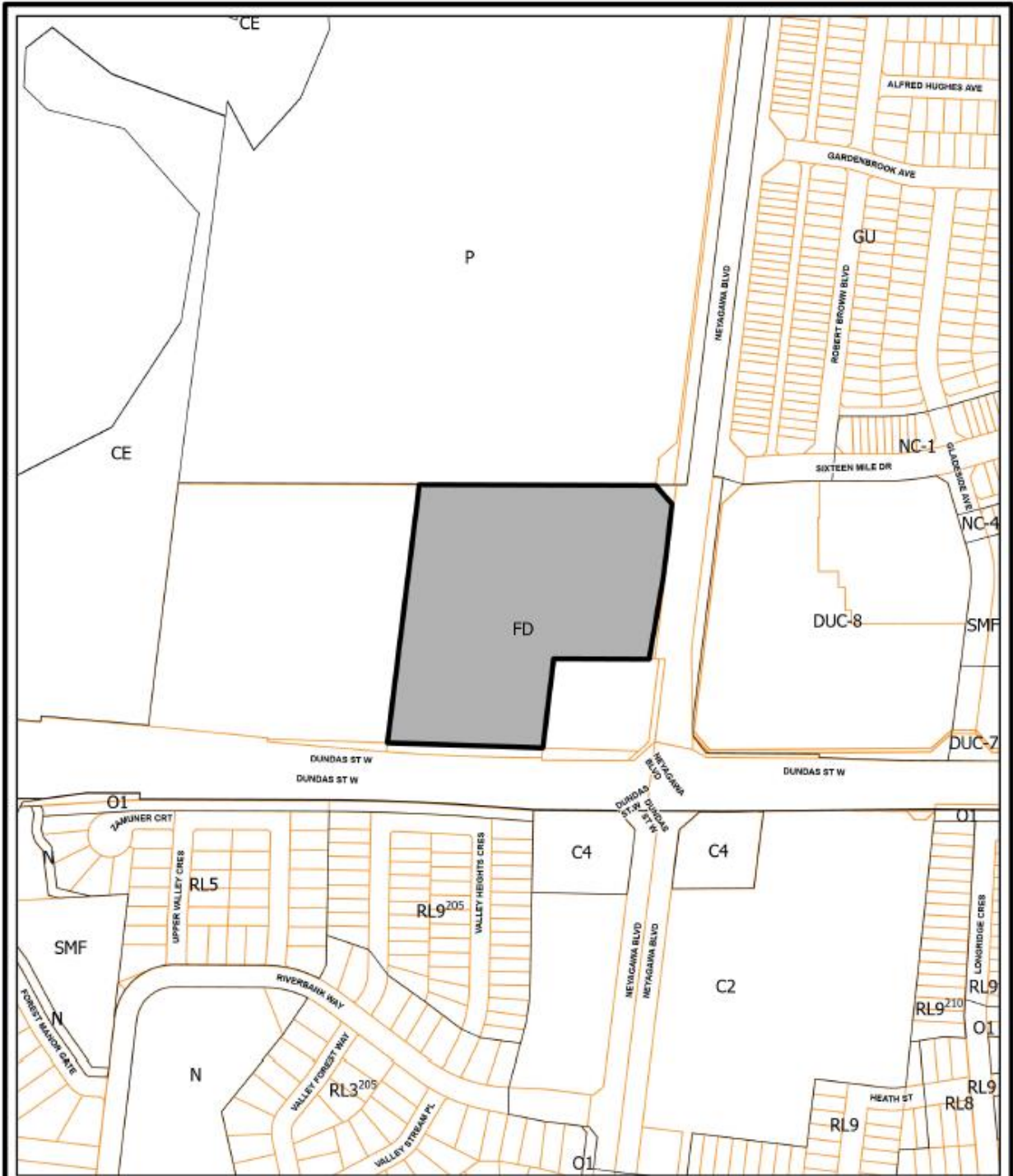
**3056 Neyagawa Boulevard
Neatt (16 Mile Creek) Inc.**

3056 Neyagawa Boulevard
OPA 1321.02, Z.1321.02 and 24T-24006/1321

**NORTH OAKVILLE
SECONDARY PLAN**

Community Development Commission

\\sp2m0100\p\ark\2012\Planning\Report Maps\2 - 24T 24006\24006_1321_02



**3056 Neyagawa Boulevard
Neatt (16 Mile Creek) Inc.**

3056 Neyagawa Boulevard
OPA 1321.02, Z.1321.02 and 24T-24006/1321

**ZONING BY-LAW
2009-189**

Community Development Commission

8/28/2010 (MJA,AWB) (Planning Report Map) (2 of 2) (Rev) (1.00) (1.01)