

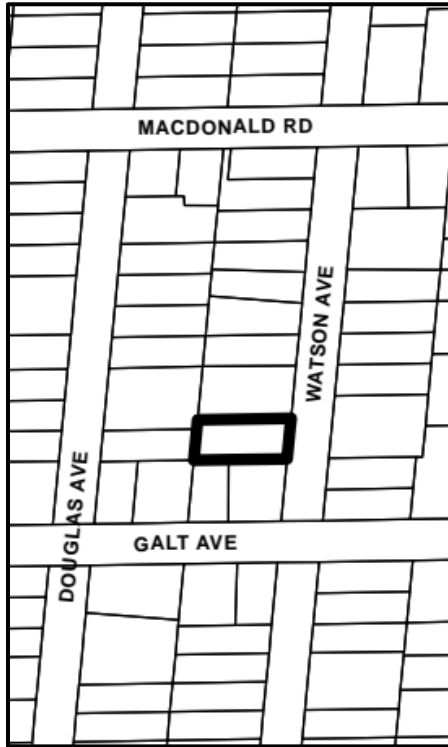
Heritage Oakville Advisory Committee

November 26, 2024

- 6 designations from the Heritage Designation Project
 - Guess House Stone Wall – 323 Douglas Avenue
 - Baillie Estate Farm Manager's Cottage – 1110 Lakeshore Road West
 - Smith House – 2460 Old Bronte Road
 - James and Muriel Blakelock House – 123 Trafalgar Road
 - Dorland House – 127 Trafalgar Road; and
 - Guess House Stone Wall – 322 Watson Avenue



OAKVILLE



Guess House Stone Wall



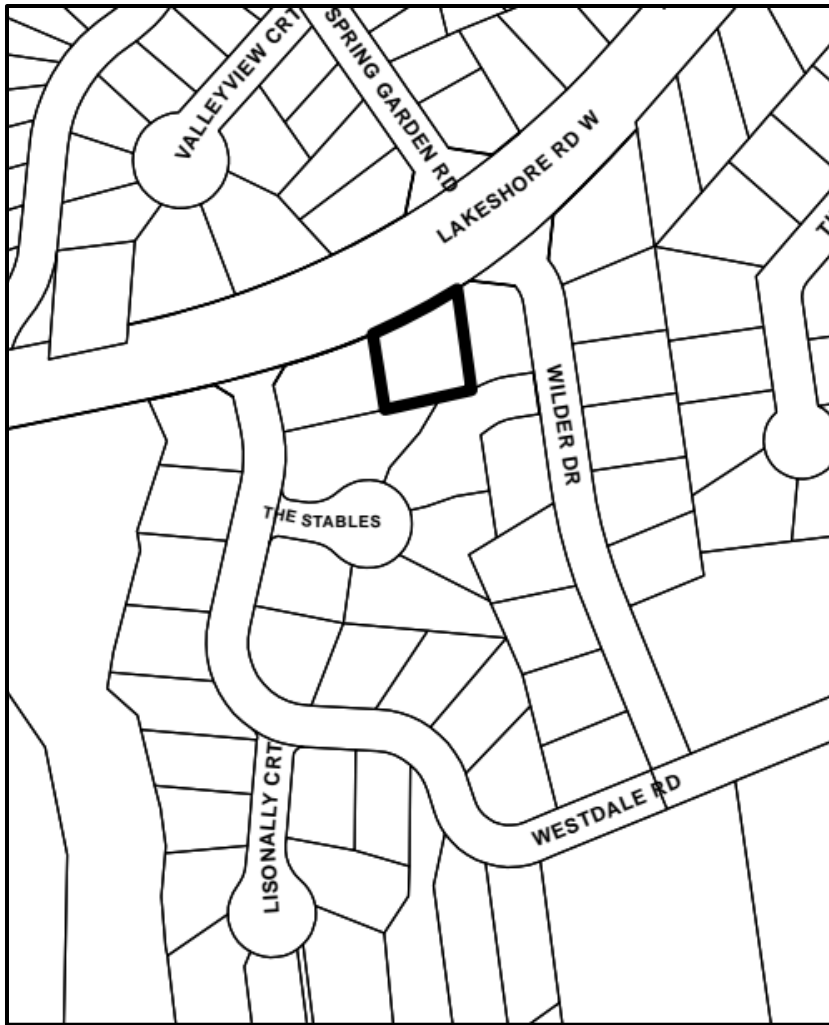
OAKVILLE

323 Douglas Avenue and 322 Watson Avenue

O.Reg 9/06 Evaluation:

- Design/physical value
 - Rare remaining examples of an early 20th century lakestone wall in Oakville.
- Historical/associative value
 - Associated with the theme of development of 'Brantwood', an early 20th century subdivision of Oakville that was influenced by the Arts and Crafts movement.
- Contextual value
 - Is important in defining, maintaining, and supporting the historic residential character of Brantwood.
 - Is physically, functionally, visually, and historically linked to its surroundings. It contributes to the history of the local community, specifically Brantwood, a significant early 20th century Oakville subdivision.





Baillie Estate Farm Manager's House

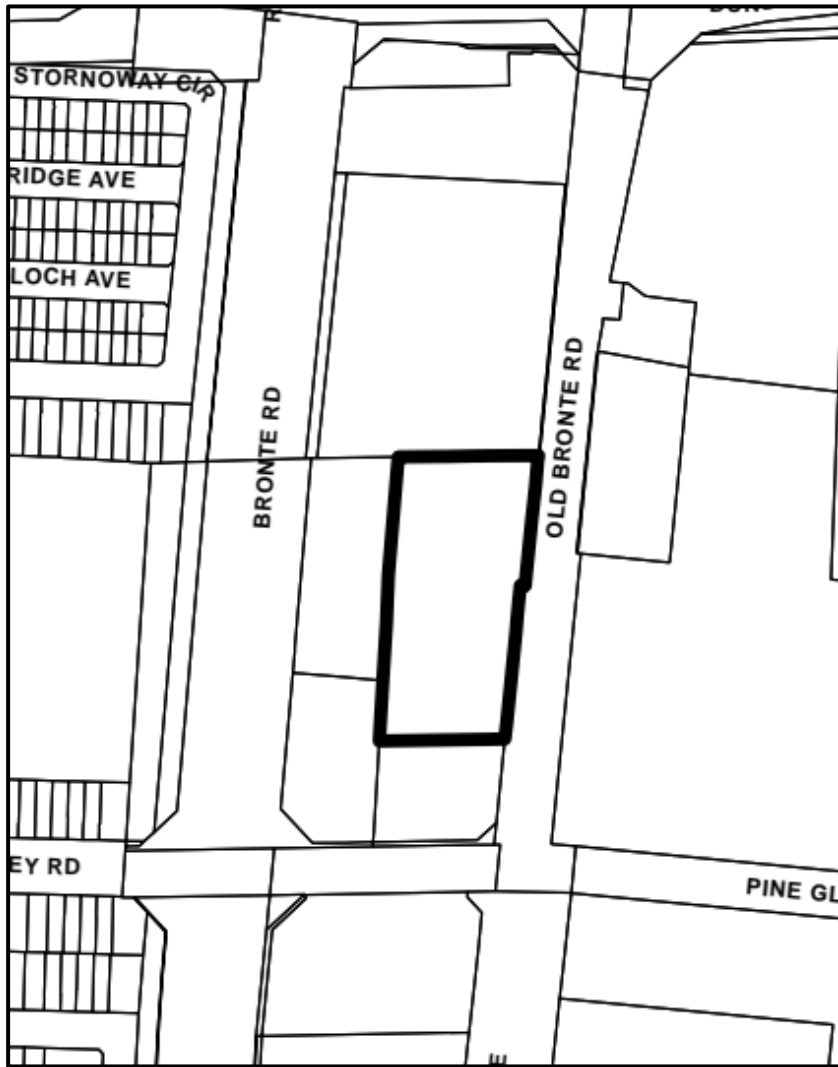


OAKVILLE

1110 Lakeshore Road West

O.Reg 9/06 Evaluation:

- Design/physical value
 - Representative example of a one-storey Arts & Crafts cottage, originally built as a farm manager's home.
- Historical/associative value
 - Associated with the Baillie family who built it as part of Lisonally Farm, the family estate.
 - Associated with the architecture firm Page & Warrington, a prominent Toronto firm.
- Contextual value
 - Physically, visually, and historically linked with its surroundings along Lakeshore Road West where it was once the entrance to Lisonally Farm.



Smith House



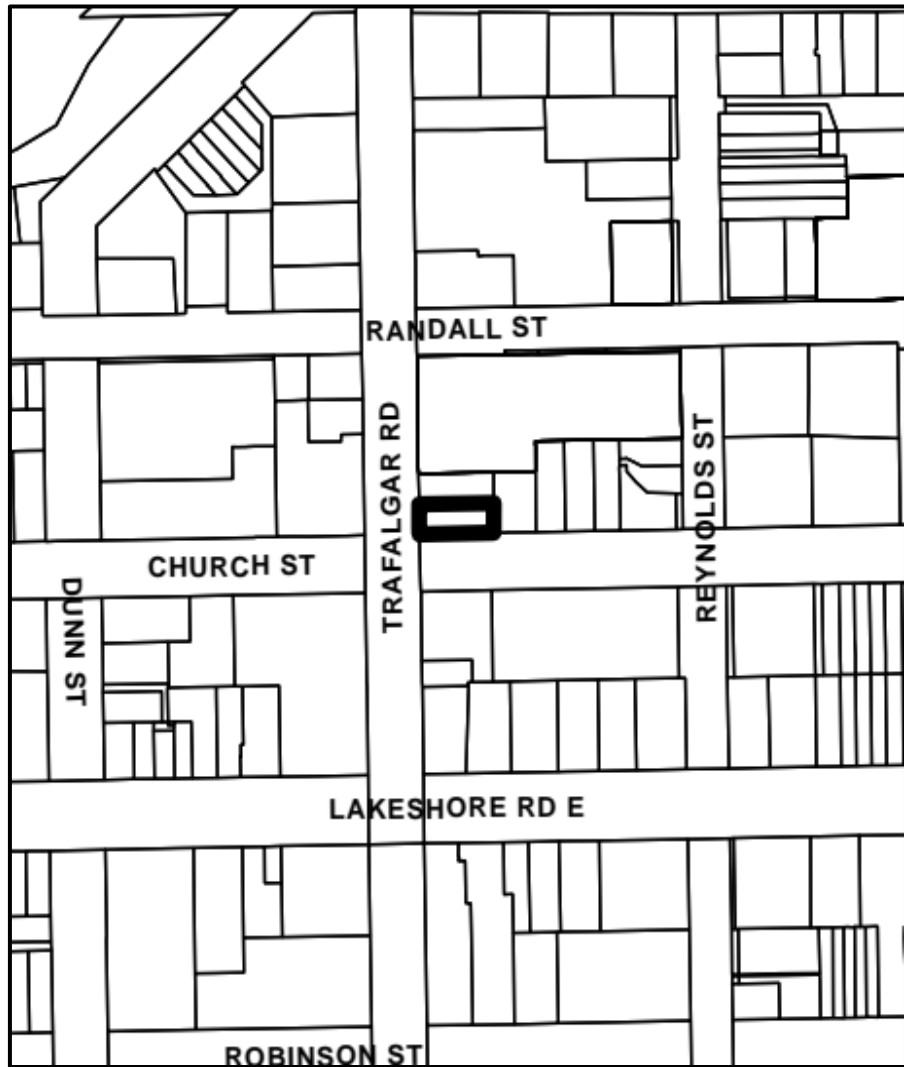
OAKVILLE

2460 Old Bronte Road

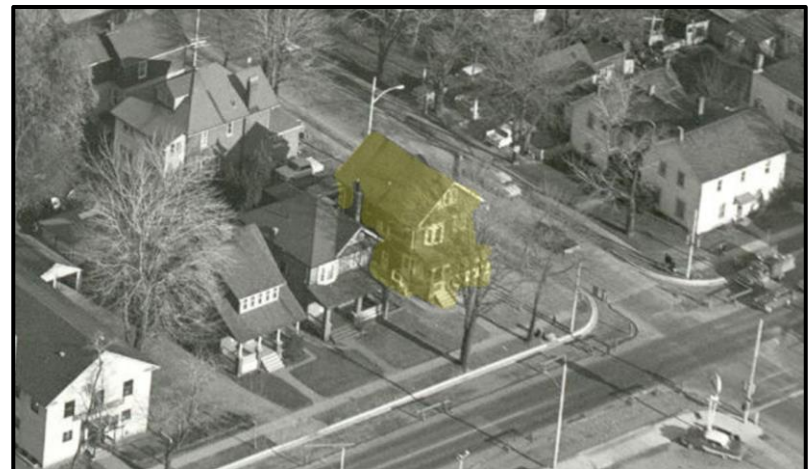
O.Reg 9/06 Evaluation:

- Design/physical value
 - Evolved example of a 19th century village house with influences from the Gothic Revival and Italianate styles.
 - Rare and early example of a circa 1813 timber-frame structure in Oakville, located at the rear of the main house
- Historical/associative value
 - Associated with the theme of 19th century village life in Palermo, the oldest European settlement in present-day Oakville
 - Associated with the Smith families, early settlers in Trafalgar Township
- Contextual value
 - Physically, visually and historically linked to its surroundings, the historic village of Palermo
 - Important in defining the area as a former historic rural village and in telling the story of the evolution of the village in the 19th and 20th centuries





James and Muriel Blakelock House



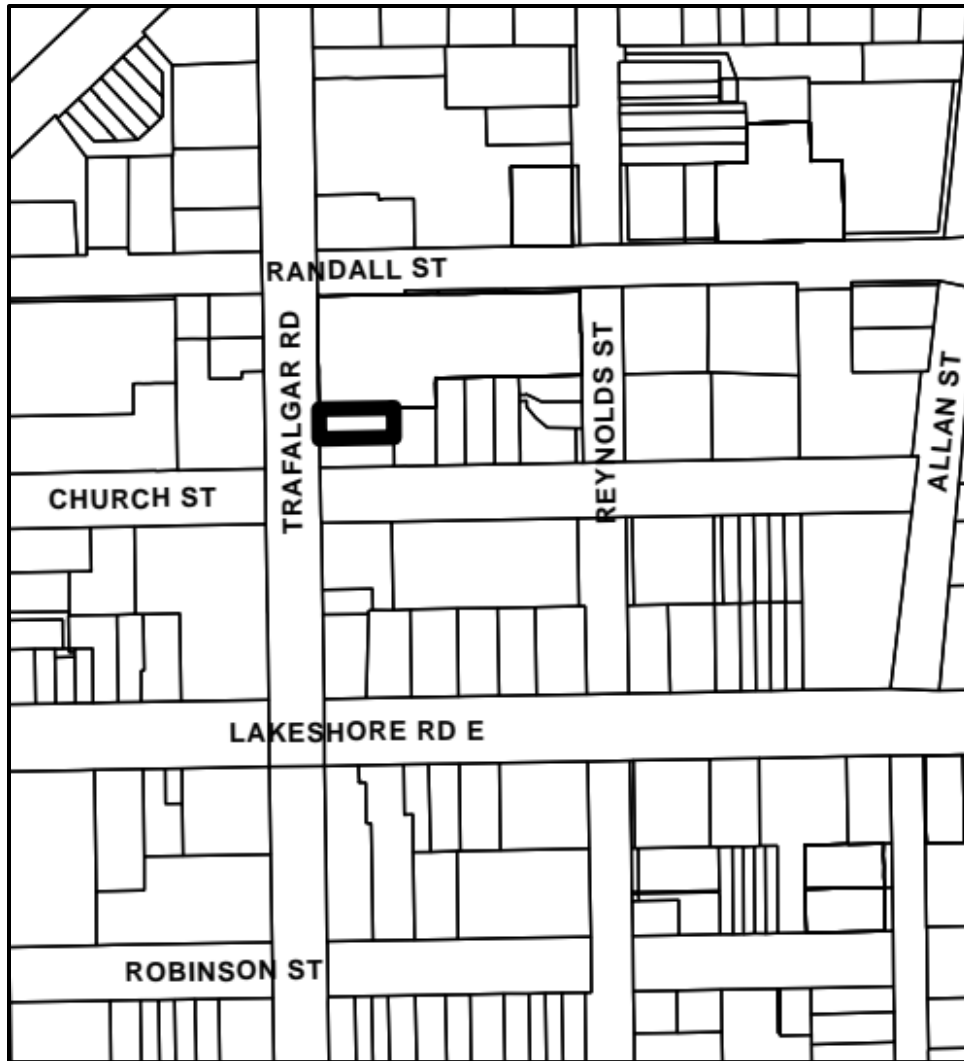
OAKVILLE

123 Trafalgar Road

O.Reg 9/06 Evaluation:

- Design/physical value
 - Representative example of an Edwardian style house with Queen Anne influences.
- Historical/associative value
 - Is directly associated with the early 20th century commercial and residential development of downtown Oakville and with the Blakelock Brothers, who built the house and were significant individuals and business owners in Oakville, specifically James B. Blakelock, who lived in the house with his family.
- Contextual value
 - Is important in defining, supporting, and maintaining the historic low-scale residential and commercial character of downtown Oakville.
 - Is physically, functionally, visually, and historically linked to the historic downtown core. It contributes to the understanding of the residential, industrial, and commercial history of downtown.





Dorland House



OAKVILLE

127 Trafalgar Road

O.Reg 9/06 Evaluation:

- Design/physical value
 - Representative example of an Edwardian style house with Queen Anne influences.
- Historical/associative value
 - The property is directly associated with the early 20th century commercial and residential development of downtown Oakville and with the Blakelock Brothers, who built the house and were significant individuals and business owners in Oakville.
- Contextual value
 - Is important in defining, supporting, and maintaining the historic low-scale residential and commercial character of downtown Oakville.
 - Is physically, functionally, visually, and historically linked to the historic downtown core. It contributes to the understanding of the residential, industrial, and commercial history of downtown.



Staff recommendation:

That a notice of intention to designate be issued under section 29, Part IV of the *Ontario Heritage Act* for the following properties:

- 1) Guess House Stone Wall at 323 Douglas Avenue;
- 2) Baillie Estate Farm Manager's Cottage at 1110 Lakeshore Road West;
- 3) Smith House at 2460 Old Bronte Road;
- 4) James and Muriel Blakelock House at 123 Trafalgar Road;
- 5) Dorland House at 127 Trafalgar Road; and
- 6) Guess House Stone Wall at 322 Watson Avenue