

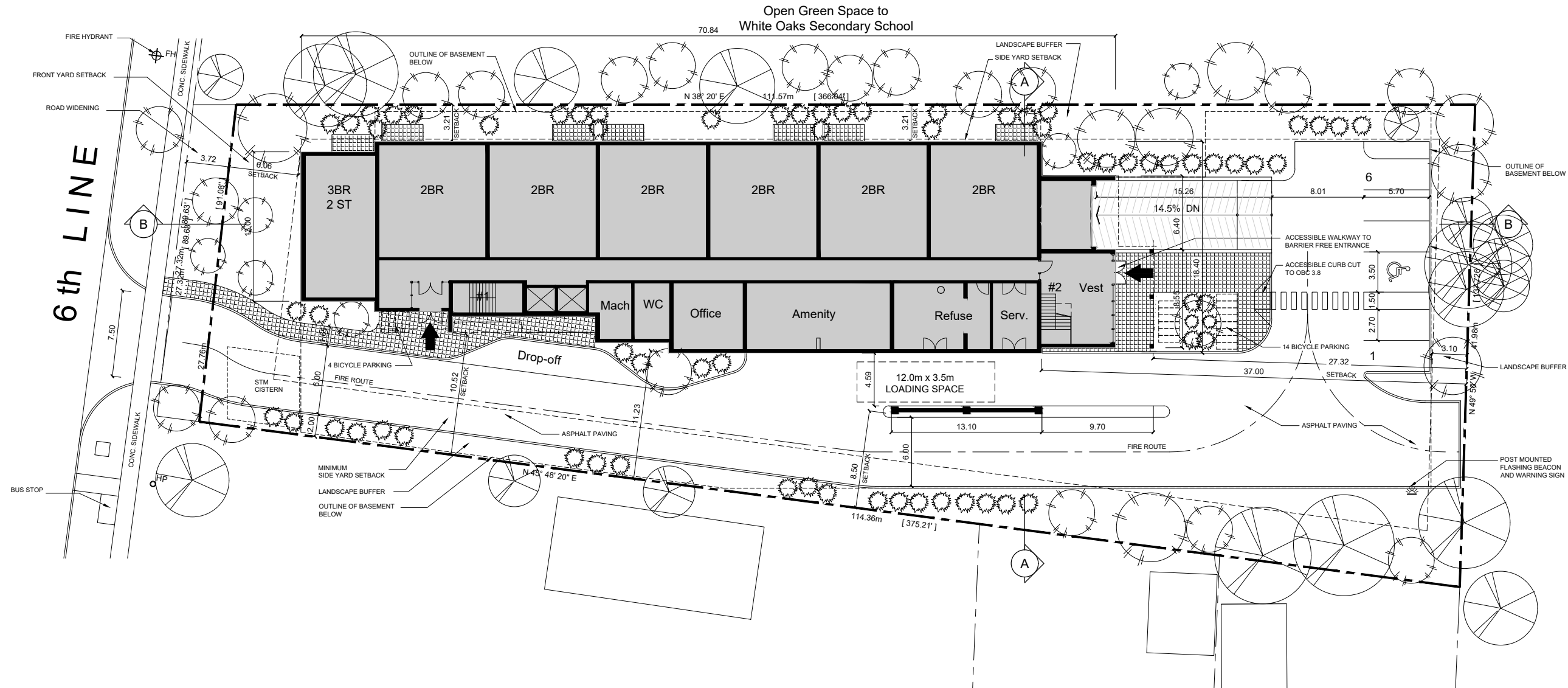
#	ISSUED FOR	DATE
1	ISSUED FOR PRELIMINARY REVIEW	07 /03/23
2	APARTMENT DESIGN REVIEW	14 /02 /23
3	REVISED DRIVEWAY ENTRANCE	17 /03 /23
4	ISSUED FOR PRELIMINARY REVIEW	11 /04/ 23
5	ISSUED FOR PRELIMINARY REVIEW	24 /11/23
6	ISSUED FOR O.P.A.	15 /12/23
7	ISSUED FOR O.P.A.	06 /02/24

© COPYRIGHT NOTES:

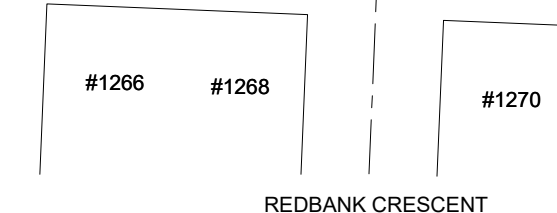
ALL DRAWINGS AND RELATED DOCUMENTS ARE THE PROPERTY OF THE DESIGNER.  
REPRODUCTION IN WHOLE OR IN PART IS FORBIDDEN WITHOUT THE PRIOR CONSENT OF THE DESIGNER. THESE DRAWINGS AND DOCUMENTS MAY NOT BE USED FOR ANY OTHER PURPOSES OTHER THAN FOR THE PROJECT FOR WHICH THEY WERE PREPARED.

GENERAL NOTES:

- DO NOT SCALE THIS DRAWING. CHECK ALL DIMENSIONS ON SITE AND REPORT ANY DISCREPANCIES TO THE DESIGNER BEFORE PROCEEDING.
- THIS IS AN METRIC DRAWING.
- LAST APPROVED DRAWINGS ONLY TO BE USED FOR CONSTRUCTION.
- SUBMIT ALL SHOP DRAWINGS (SUCH AS TRUSS ETC.) TO THE DESIGNER FOR REVIEW.
- ALL CONSTRUCTION AND SERVICES MUST COMPLY WITH OBC (ONTARIO BUILDING CODE)



SITE PLAN



UNIT MIX							
FLOOR	GFA	1 BR	2 BR	3 BR	TOTAL	NRA	PKG
GROUND	1128.6 m <sup>2</sup>	0	6	-	6	650.8 m <sup>2</sup>	9
SECOND	1113.9 m <sup>2</sup>	0	10	1	11	865.3 m <sup>2</sup>	15.5
THIRD	1025.0 m <sup>2</sup>	11	2	1	14	803.1 m <sup>2</sup>	14.5
FOURTH	1025.0 m <sup>2</sup>	11	2	1	14	803.1 m <sup>2</sup>	14.5
FIFTH	1025.0 m <sup>2</sup>	11	2	1	14	803.1 m <sup>2</sup>	14.5
SIXTH	842.6 m <sup>2</sup>	9	2	0	11	624.0 m <sup>2</sup>	11.5
<b>TOTAL</b>	<b>6160.1 m<sup>2</sup></b>	<b>42</b>	<b>24</b>	<b>4</b>	<b>70</b>	<b>4549.4 m<sup>2</sup></b>	<b>80</b>

AREA CALCULATION		
TOTAL Site Area	3,820.2 m <sup>2</sup>	0.38 ha
Building foot-print	1,174.2 m <sup>2</sup>	
Landscape Area	±28 %	
TOTAL Floor Area (GFA)	6,160.4 m <sup>2</sup>	
No. of Units	70 units	
Building Height	6 storeys	
TOTAL Parking required	80 spaces	
TOTAL Parking provided	80 spaces	
Bicycle Parking required	70 spaces	
Bicycle Parking provided	52 + 18V = 70 spaces	
Units / hectare - proposed	184.2 units/ha	
Floor Space Index	1.61	
TOTAL Unit Area	4,605.7 m <sup>2</sup>	

**PRELIMINARY NOT FOR CONSTRUCTION**

**RICK BROWN & ASSOCIATES INC.**  
1100 CENTRAL PARKWAY WEST  
SUITE 30, 2ND FLOOR  
MISSISSAUGA, ON, L5C 4E5  
T: 905 897-0388  
C: 905 510-2579  
rick@RBAdesign.ca

PROJECT NAME & ADDRESS:  
**PROPOSED RESIDENTIAL INFILL DEVELOPMENT**  
1285 SIXTH LINE, OAKVILLE, ON

SCALE: 1:200	DATE: JUNE 27, 2022	DRAWN BY: RB / MS	JOB No.: 202212
-----------------	------------------------	----------------------	--------------------

SITE PLAN  
DRAWING No.:  
**SP1**





1295 Sixth Line, Oakville