

# Heritage Oakville Advisory Committee

February 27, 2024

- 3 designations from the Heritage Designation Project
  - 159 Balsam Drive – *Thomas and Electa Leach House*
  - 2069 Lakeshore Road East – *Dunhope Heath*
  - 1099 Sixth Line – *Louth House*



OAKVILLE

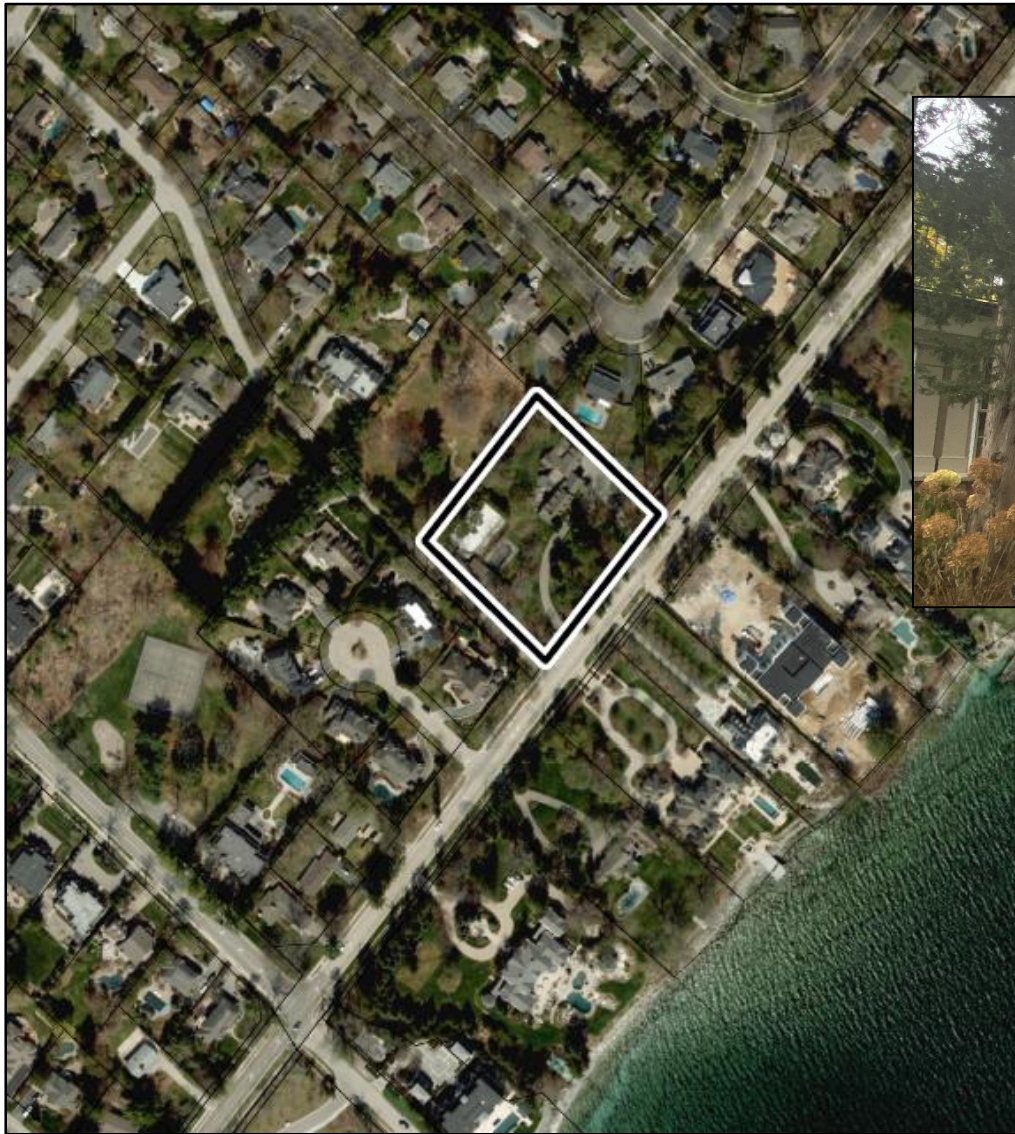


Thomas  
and Electa  
Leach  
House

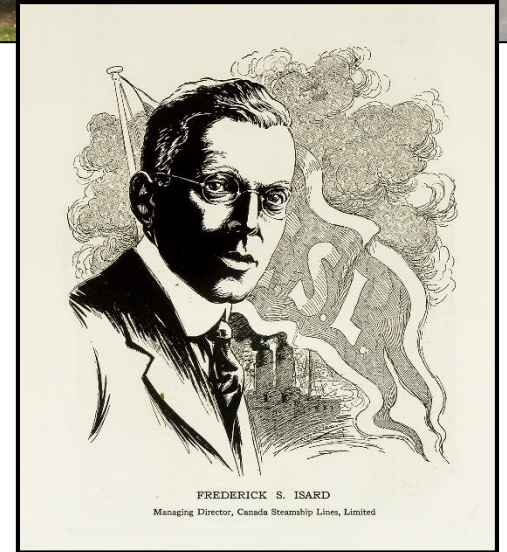


# O.Reg 9/06 Evaluation:

- Design/physical value
  - Representative example of an 1830s Neoclassical frame house and a rare and early example of its kind in Oakville.
- Historical/associative value
  - Associated with the Leach family and Wass family who both had a significant impact on the early development of the town.
  - Reflects the work of the Leach family, carpenters who built the house.
- Contextual value
  - Important in supporting the area as one that's defined by its transition from mid-19<sup>th</sup> century farmland to 20<sup>th</sup> century suburban development.
  - Physically, functionally, visually and historically linked to its surroundings.



Dunhope  
Heath

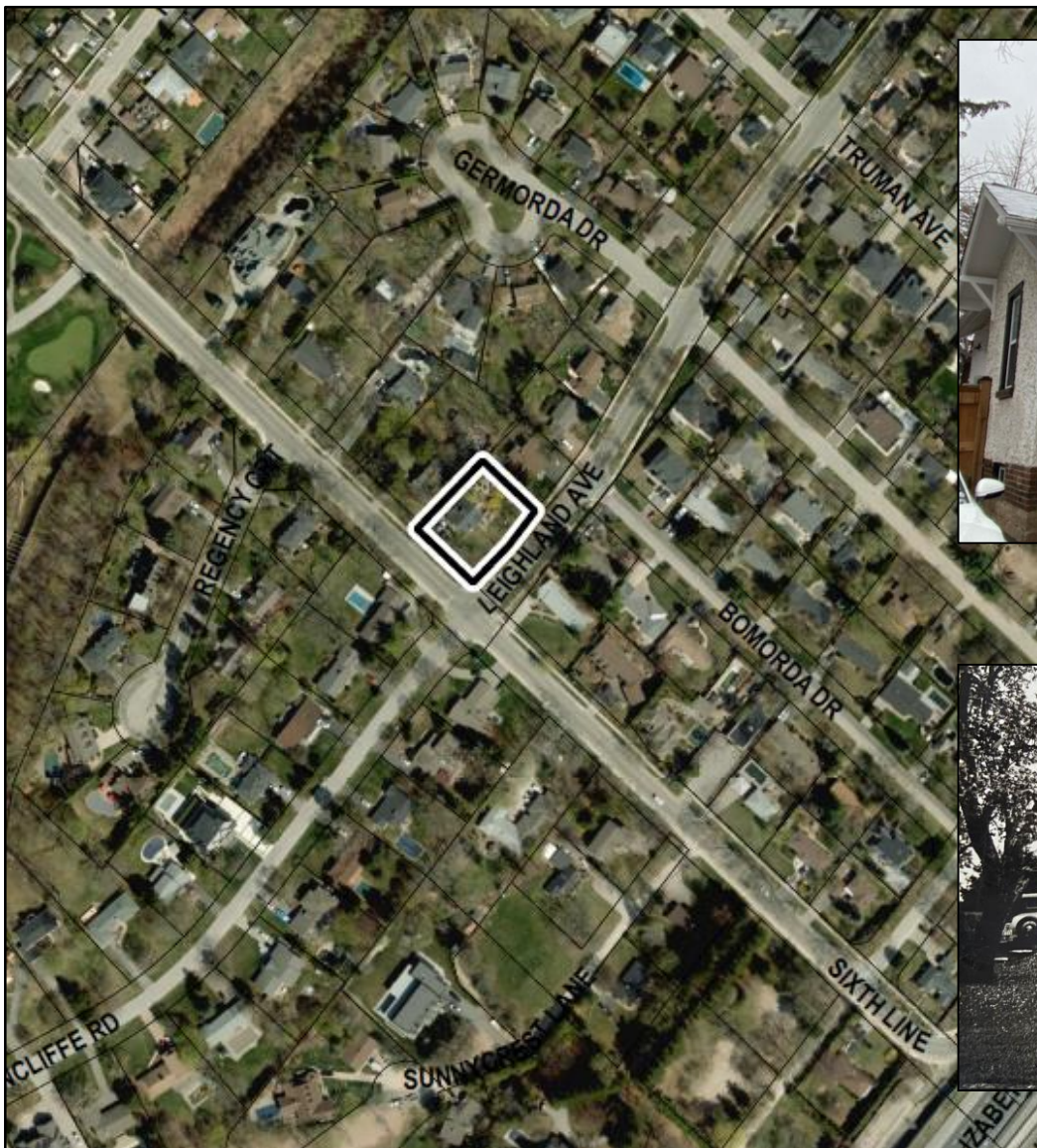


OAKVILLE

2069 Lakeshore Road East

# O.Reg 9/06 Evaluation:

- Design/physical value
  - Representative example of a 1920s Colonial Revival style estate house.
- Historical/associative value
  - Associated with the theme of development of wealthy lakeshore estates in southeast Oakville.
  - Associated with the Isard family who built the house.
- Contextual value
  - Important in defining, supporting and maintaining the character of the area that is defined by large estate homes.
  - Physically, functionally, visually and historically linked to its surroundings and contributes to the understanding of the history of Oakville's historic lakeshore estates.



Louth House



OAKVILLE

1099 Sixth Line

# O.Reg 9/06 Evaluation:

- Design/physical value
  - Representative example of an early 20<sup>th</sup> century Craftsman Bungalow.
- Historical/associative value
  - Associated with T.C. Hagaman, a well-known local fruit farmer who built the house.
  - Associated with Leslie Louth, a local golf professional who lived in the house for over 60 years.
- Contextual value
  - Is physically, visually and historically linked to its surroundings and acts as an important anchor to the understanding of the residential development of the local community from farmland.



# Staff recommendation:

That a notice of intention to designate be issued under section 29, Part IV of the *Ontario Heritage Act* for the following properties:

- 1) Thomas and Electa Leach House at 159 Balsam Drive;
- 2) Dunhope Heath at 2069 Lakeshore Road East;
- 3) Louth House at 1099 Sixth Line.

