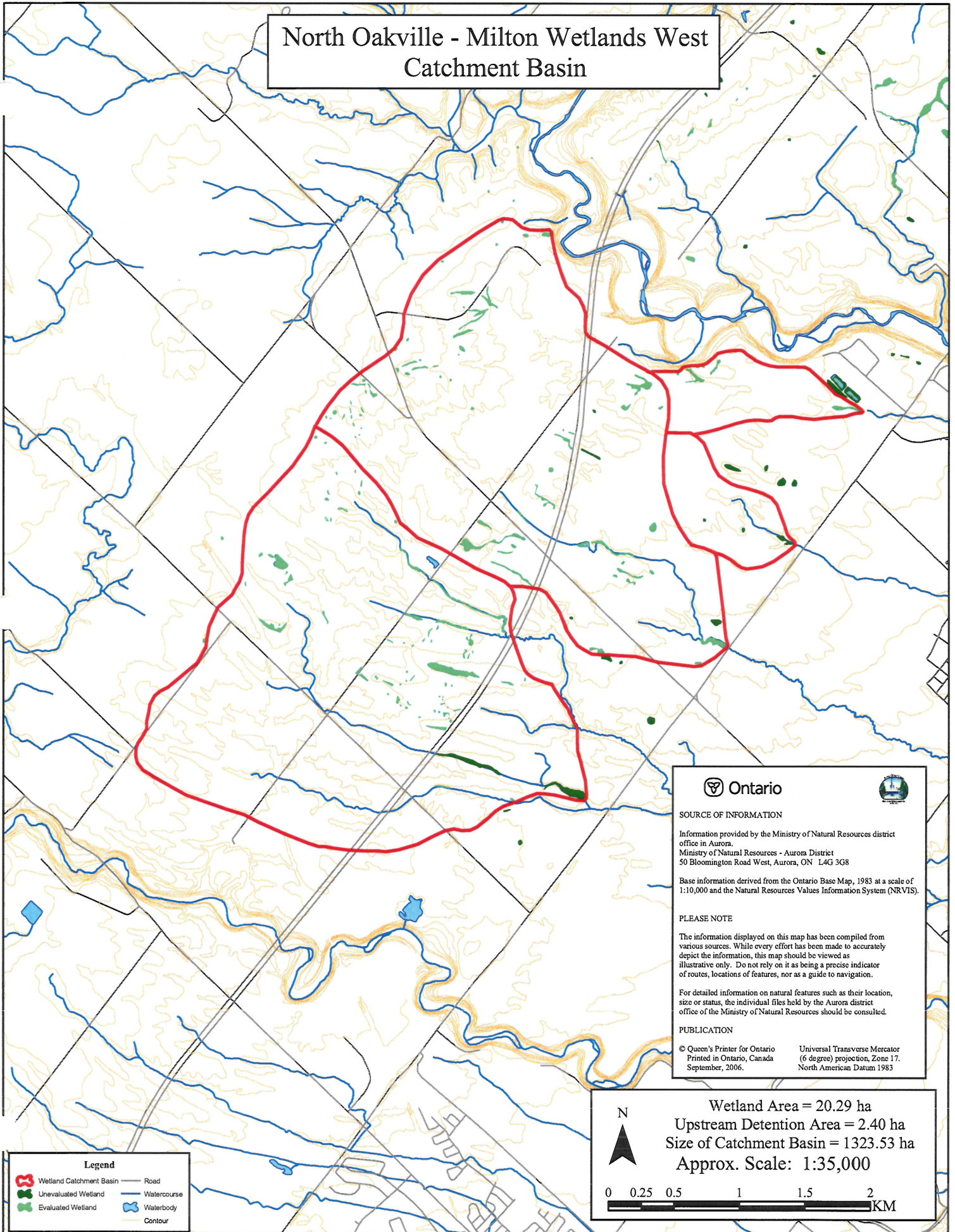




North Oakville - Milton Wetlands West
Catchment Basin



 Ontario 

SOURCE OF INFORMATION
 Information provided by the Ministry of Natural Resources district office in Aurora.
 Ministry of Natural Resources - Aurora District
 50 Bloomington Road West, Aurora, ON L4G 3G8

Base information derived from the Ontario Base Map, 1983 at a scale of 1:10,000 and the Natural Resources Values Information System (NRVIS).

PLEASE NOTE
 The information displayed on this map has been compiled from various sources. While every effort has been made to accurately depict the information, this map should be viewed as illustrative only. Do not rely on it as being a precise indicator of routes, locations of features, nor as a guide to navigation.

For detailed information on natural features such as their location, size or status, the individual files held by the Aurora district office of the Ministry of Natural Resources should be consulted.




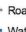
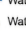


PUBLICATION
 © Queen's Printer for Ontario
 Printed in Ontario, Canada
 September, 2006.

Universal Transverse Mercator
 (6 degree) projection, Zone 17,
 North American Datum 1983

Wetland Area = 20.29 ha
 Upstream Detention Area = 2.40 ha
 Size of Catchment Basin = 1323.53 ha
 Approx. Scale: 1:35,000

0 0.25 0.5 1 1.5 2 KM

Legend

-  Wetland Catchment Basin
-  Unevaluated Wetland
-  Evaluated Wetland
-  Road
-  Watercourse
-  Waterbody
-  Contour