

**PLAN 20M-1203**

I CERTIFY THAT THIS PLAN 20M-1203 IS REGISTERED IN THE LAND REGISTRY OFFICE FOR THE LAND TITLES DIVISION OF HALTON (20) AT 11:28 O'CLOCK ON THE 19th DAY OF APRIL 2018 AND ENTERED IN THE REGISTER FOR PIN 24879-0080 AND REQUIRED CONSENTS ARE REGISTERED AS PLAN DOCUMENT NO. HR153140

*[Signature]*  
 REPRESENTATIVE FOR LAND REGISTRAR

**MUNICIPAL APPROVAL**  
 APPROVED UNDER SECTION 51 OF THE PLANNING ACT, R.S.O. 1990, C.P.13, AS AMENDED, BY THE DIRECTOR OF PLANNING FOR THE TOWN OF OAKVILLE

THIS 17th DAY OF April, 2018

*[Signature]*  
 MARK H. SIMON, M.C.P., R.P.P.  
 DIRECTOR OF PLANNING SERVICES  
 TOWN OF OAKVILLE  
 (AUTHORITY GRANTED BY BY-LAW 1998-2/2, AS AMENDED)

THIS PLAN COMPRESSES PART OF PIN 24879-0080

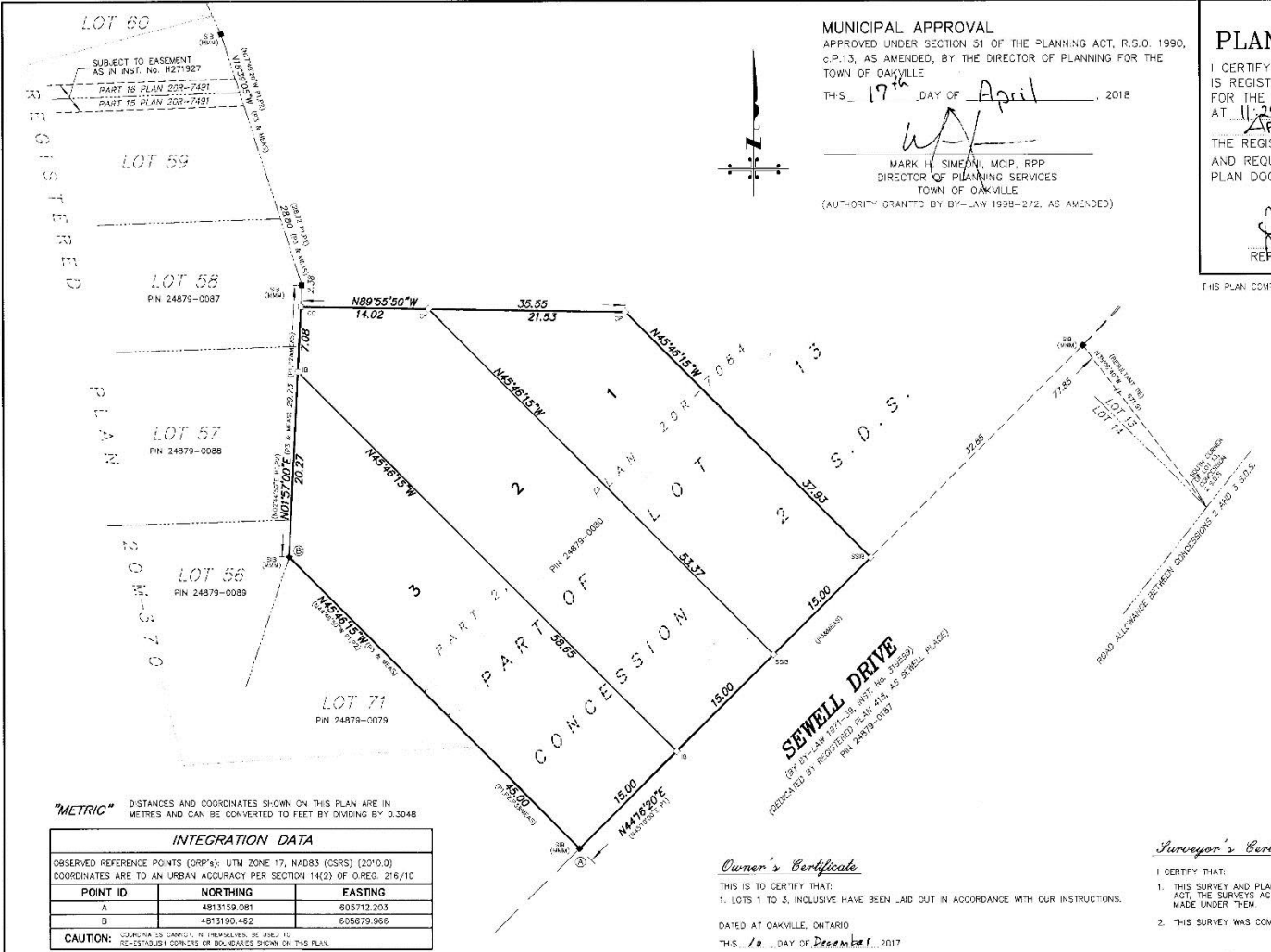
PLAN OF SUBDIVISION OF  
**PART OF LOT 13  
 CONCESSION 2 SDS**  
 (GEOGRAPHIC TOWNSHIP OF TRAFALGAR)

BEND IN THE  
**TOWN OF OAKVILLE**  
 SCALE 1 : 300

0 10 20 METERS

**MacKAY, MacKAY & PETERS LIMITED - 2017**

- Legend :**
- DENOTES A SURVEY MONUMENT FOUND
  - DENOTES A SURVEY MONUMENT PLANTED
  - DENOTES STANDARD MONUMENT
  - DENOTES MONUMENT
  - P.N. DENOTES PROPERTY IDENTIFICATION NUMBER
  - 20 DENOTES PLAN 20M-1203
  - 21 DENOTES PLAN 20M-370
  - 22 DENOTES PLAN 20M-370
  - 23 DENOTES PLAN 20M-370
  - 24 DENOTES PLAN 20M-370
- DATED NOVEMBER 24, 2015



**"METRIC"** DISTANCES AND COORDINATES SHOWN ON THIS PLAN ARE IN METRES AND CAN BE CONVERTED TO FEET BY DIVIDING BY 0.3048

INTEGRATION DATA		
OBSERVED REFERENCE POINTS (ORP'S): UTM ZONE 17, NAD83 (CSRS) (2010.0)		
COORDINATES ARE TO AN URBAN ACCURACY PER SECTION 14(2) OF O.REG. 216/10		
POINT ID	NORTHING	EASTING
A	4813159.281	805712.203
B	4813190.462	805679.966

**CAUTION:** COORDINATES SHOWN ON THIS PLAN ARE TO BE USED TO ESTABLISH CORNERS OR BOUNDARIES SHOWN ON THIS PLAN.

**Bearing Reference :**  
 BEARINGS ARE UTM GRID, DERIVED FROM OBSERVED REFERENCE POINTS A AND B, BY REAL TIME NETWORK (RTN) OBSERVATIONS, UTM ZONE 17, NAD83 (CSRS) (2010.0). DISTANCES ON THIS PLAN ARE GROUND AND CAN BE CONVERTED TO GRID BY MULTIPLYING BY THE COMBINED SCALE FACTOR OF 0.999697. FOR BEARING COMPARISONS, A ROTATION OF 0°53'40" COUNTER-CLOCKWISE WAS APPLIED TO BEARINGS ON PLAN P3.

**Owner's Certificate**

THIS IS TO CERTIFY THAT:  
 1. LOTS 1 TO 3, INCLUSIVE HAVE BEEN LAID OUT IN ACCORDANCE WITH OUR INSTRUCTIONS.

DATED AT OAKVILLE, ONTARIO  
 THIS 10th DAY OF December, 2017

*[Signature]* JAMES GREER - TRUSTEE  
*[Signature]* MARKUS KALINA - TRUSTEE  
*[Signature]* VICKI NOCK - TRUSTEE  
*[Signature]* ROSS ROBERTS - TRUSTEE

"WE HAVE THE AUTHORITY TO BIND THE CORPORATION"  
 THE TRUSTEES OF THE TRINITY CONGREGATION OF THE UNITED CHURCH OF CANADA

**Surveyor's Certificate**

I CERTIFY THAT:  
 1. THIS SURVEY AND PLAN ARE CORRECT AND IN ACCORDANCE WITH THE SURVEYORS ACT, THE SURVEYS ACT AND THE LAND TITLES ACT AND THE REGULATIONS MADE UNDER THEM  
 2. THIS SURVEY WAS COMPLETED ON THE 25th DAY OF APRIL, 2017.

DEC 12 / 17  
 DATE

*[Signature]*  
 ROYCE MITO  
 ONTARIO LAND SURVEYOR  
 FOR MACKAY, MACKAY & PETERS LIMITED

<b>MACKAY          MACKAY          &amp; PETERS          LIMITED</b> <small>Established 1906</small>	ONTARIO LAND SURVEYORS 3360 SOUTH SERVICE ROAD BURLINGTON, ONTARIO L7R 3J5 PHONE: (905) 639-3735 FAX: (905) 333-8844 e-mail: mackay@mackayandpeters.com Records of Sewell & Sewell and Yates & Yates LTD.	15-200-M
	4.5	2M
	2M	2M
	2M	2M

**APPENDIX 'B' - LEGAL PLAN**