

# Oakville DRAFT Population and Employment Forecast by Strategic Growth Area

based on draft Joint Best Planning Estimates v3.02\_refined

Town of Oakville			
year	people	jobs	ppl+jobs
2031	295,939	147,198	443,137
2041	378,469	183,555	562,024
2051	444,000	212,788	656,788

Dundas Urban Core (W)			
year	people	jobs	ppl+jobs
2031	3,614	1,876	5,490
2041	5,365	2,571	7,936
2051	7,107	3,198	10,305

Neyagawa Urban Core			
year	people	jobs	ppl+jobs
2031	2,984	367	3,351
2041	6,542	754	7,296
2051	10,500	1,176	11,676

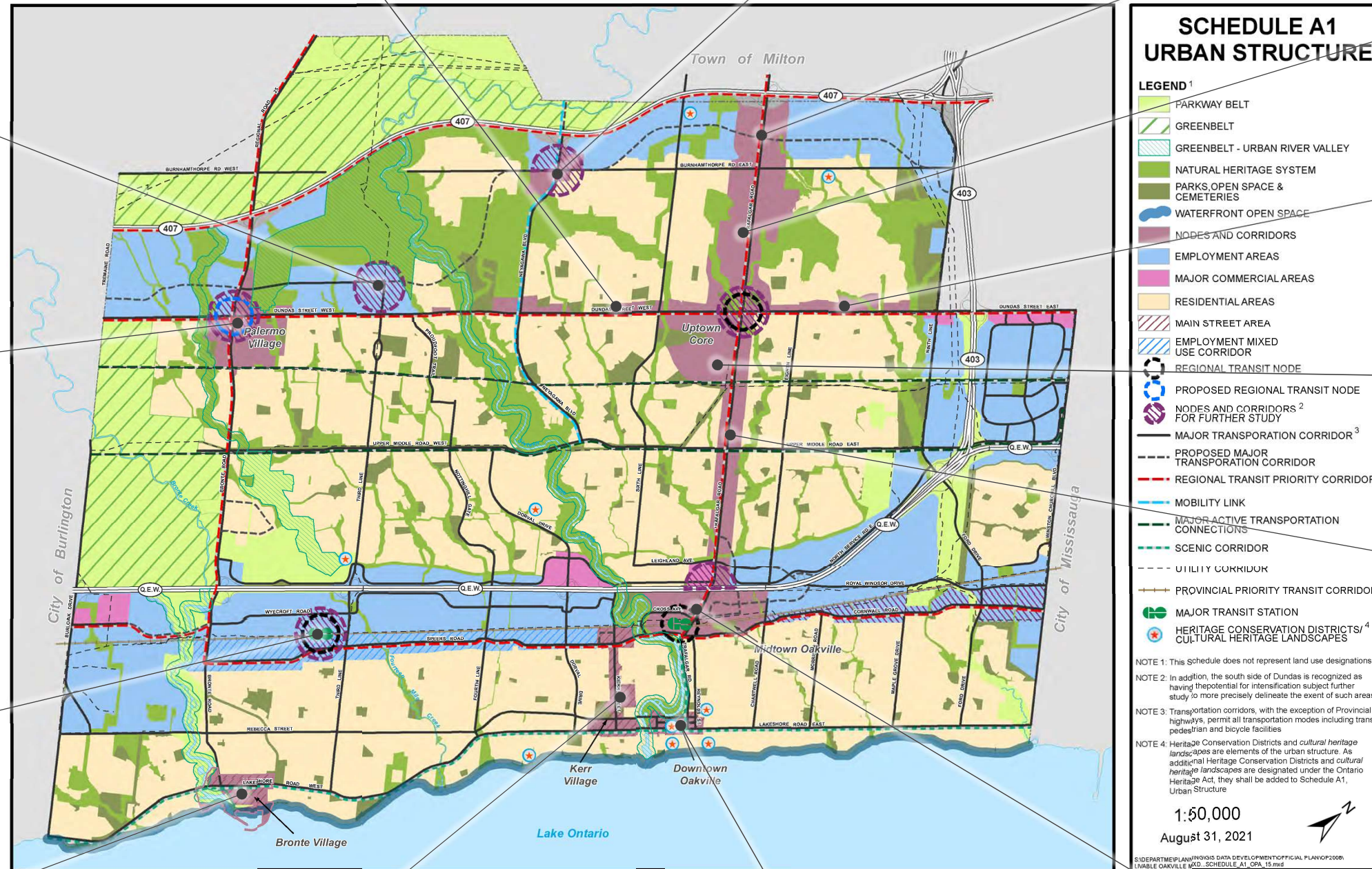
Trafalgar Urban Core (N)			
year	people	jobs	ppl+jobs
2031	4	0	4
2041	8,151	1,746	9,897
2051	17,673	3,817	21,491

Trafalgar Urban Core (S)			
year	people	jobs	ppl+jobs
2031	18,168	1,416	19,584
2041	31,378	6,891	38,269
2051	45,082	10,127	55,209

Hospital District			
year	people	jobs	ppl+jobs
2031	1,034	5,829	6,863
2041	2,372	6,692	9,064
2051	4,062	7,232	11,294

Palermo Village			
year	people	jobs	ppl+jobs
2031	6,740	2,661	9,401
2041	13,176	3,576	16,752
2051	19,634	4,715	24,349

Bronte GO (Major Transit Station Area)			
year	people	jobs	ppl+jobs
2031	609	1,456	2,065
2041	1,990	2,779	4,769
2051	4,555	5,349	9,904



Dundas Urban Core (E)			
year	people	jobs	ppl+jobs
2031	1,072	248	1,320
2041	2,217	466	2,683
2051	3,352	653	4,005

Uptown Core			
year	people	jobs	ppl+jobs
2031	9,384	4,506	13,890
2041	12,098	6,195	18,293
2051	14,404	7,803	22,207

Trafalgar Corridor			
year	people	jobs	ppl+jobs
2031	10,257	7,754	18,011
2041	14,067	8,756	22,823
2051	17,826	9,570	27,396

Bronte Village			
year	people	jobs	ppl+jobs
2031	3,653	1,356	5,009
2041	4,360	1,618	5,978
2051	5,053	1,891	6,944

Kerr Village			
year	people	jobs	ppl+jobs
2031	6,985	2,660	9,645
2041	8,663	3,012	11,675
2051	10,893	3,374	14,267

Downtown Oakville			
year	people	jobs	ppl+jobs
2031	1,678	2,539	4,217
2041	2,706	2,995	5,701
2051	2,966	3,198	6,164

Midtown Oakville (Urban Growth Centre)			
year	people	jobs	ppl+jobs
2031	11,710	7,376	19,086
2041	24,140	12,801	36,941
2051	32,472	17,268	49,740