

PLAN 20M - 1139

I CERTIFY THAT THIS PLAN IS REGISTERED IN THE LAND REGISTRY OFFICE FOR THE LAND TITLES DIVISION OF HALTON AT 2:45 O'CLOCK ON THE 9th DAY OF JULY 2013... 2499-0220 AND THE REQUIRED CONSENTS ARE REGISTERED IN THE LAND REGISTRY OFFICE FOR THE LAND TITLES DIVISION OF HALTON DOCUMENT NO. MR. 112-5580

THIS PLAN COMPRESSES PART OF P.L.N. 2492-0220 SUBJECT TO AN EASEMENT OVER PARTS 2 AND 3 OF P.L.N. 2492-0220 AS SET OUT IN INST. NO. HR989893 (AFFECTS PART OF BLOCK 338 (STREET MIDDING) AND PART OF BLOCK 337 (STREET MIDDING)).

REPRESENTATIVE FOR LAND REGISTRAR Trace Wendorf

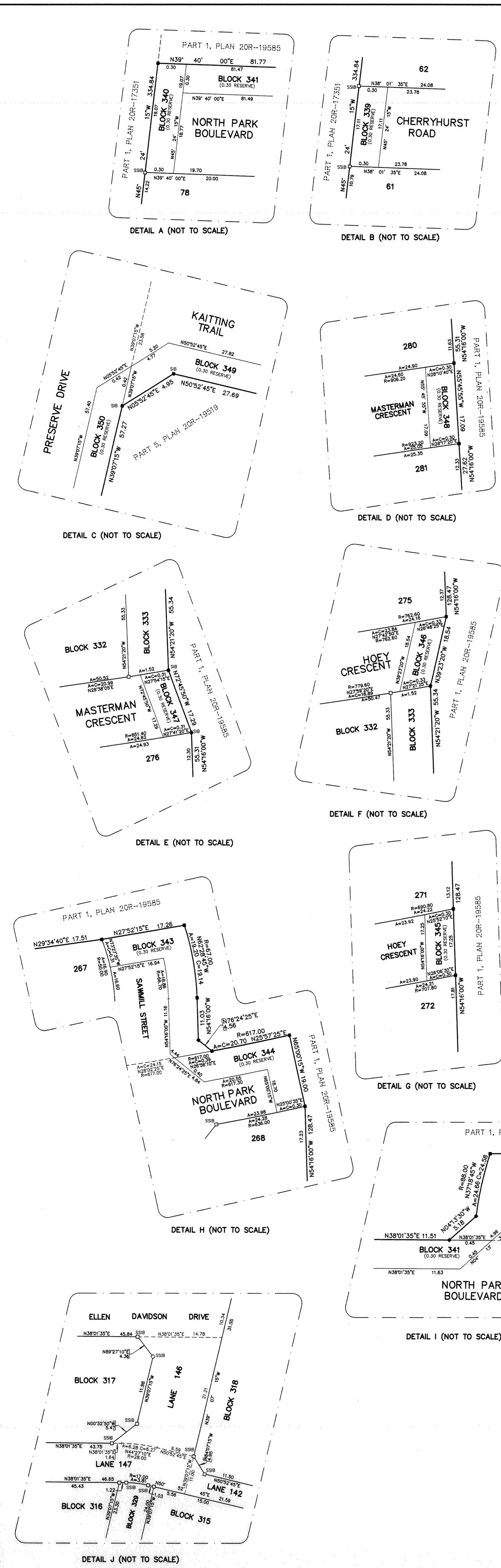
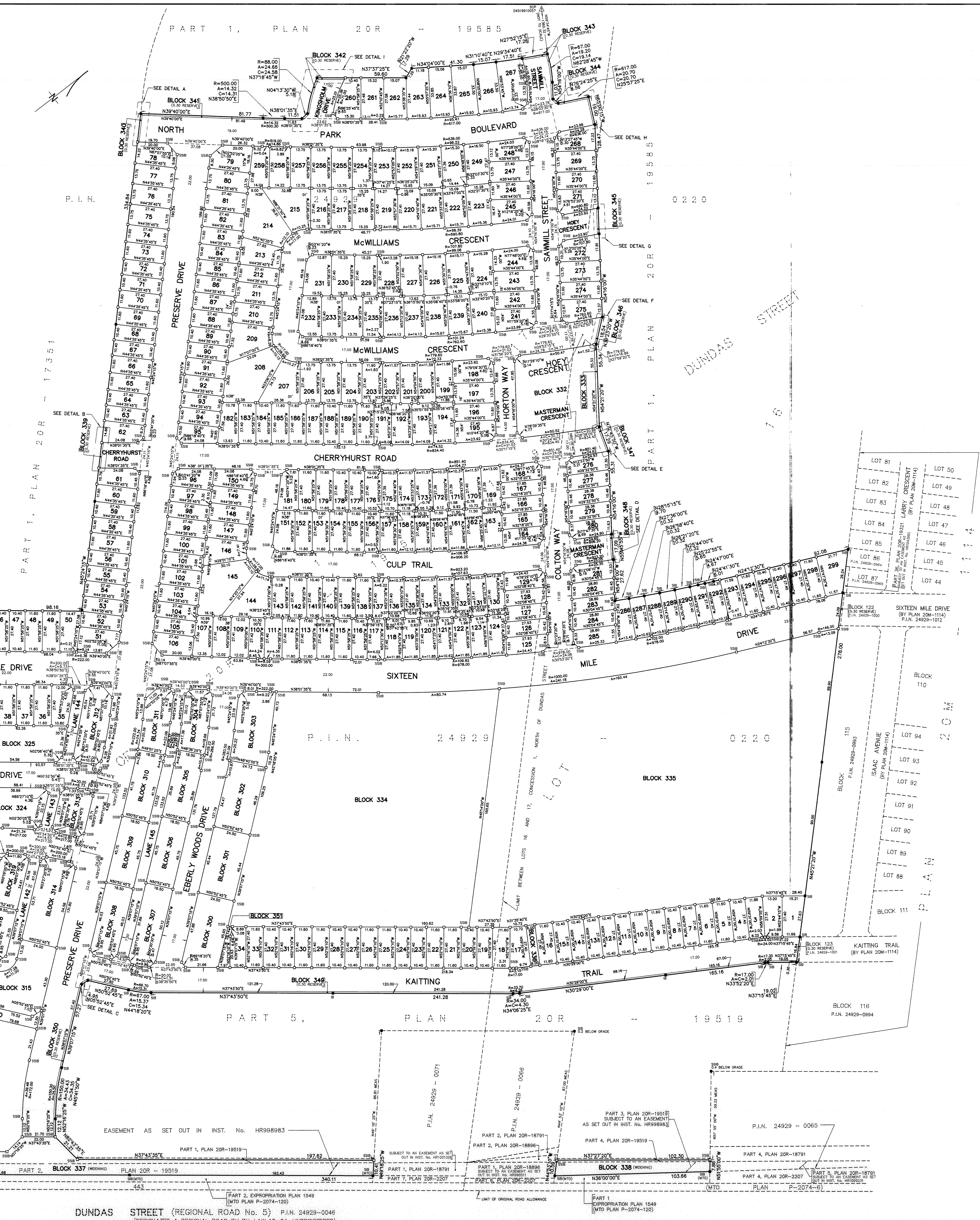


Table with columns: LOT/BLOCK, CURVE DATA, BEARING, DISTANCE (METRES). It lists detailed survey data for multiple lots and blocks.

Table with columns: STREET AND LANE, CURVE DATA, CHORD, BEARING. It lists survey data for streets and lanes.



PLAN OF SUBDIVISION OF PART OF LOTS 16 AND 17, CONCESSION 1 NORTH OF DUNDAS STREET (GEOGRAPHIC TOWNSHIP OF TRAFALGAR) TOWN OF OAKVILLE REGIONAL MUNICIPALITY OF HALTON

SURVEYOR'S CERTIFICATE I CERTIFY THAT: 1. THIS SURVEY AND PLAN ARE CORRECT AND IN ACCORDANCE WITH THE SURVEYS ACT, THE SURVEYORS ACT AND THE LAND TITLES ACT AND THE REGULATIONS MADE UNDER THEM. 2. THE SURVEY WAS COMPLETED ON THE 9th DAY OF JULY 2013. DATE July 11, 2013 R. DeBruin ONTARIO LAND SURVEYOR

NOTES ALL FOUND MONUMENTS ARE SHORT STANDARD IRON BARS UNLESS NOTED OTHERWISE. ALL SET MONUMENTS ARE IRON BARS UNLESS NOTED OTHERWISE. ALL FOUND MONUMENTS ARE BY RADY-PENTEK & EDWARD SURVEYING LTD., O.S.S. BEARINGS AND GRID UTM ZONE 17, NAD83 (ORIGINAL DERIVED FROM SPP 0081900318 NORTH 481204.028 EAST 60097.328 SPP 0435990255 NORTH 401586.559 EAST 60072.323 COORDINATES ARE LTM ZONE 17, NAD83 (ORIGINAL TO UTM) ACCURACY PER SEC 4 (3) OF OREG. 218/74, AND CANNOT, IN ANY CASE, BE USED TO RE-ESTABLISH CORNERS OR BOUNDARIES SHOWN ON THIS PLAN.

OWNER'S CERTIFICATE THIS IS TO CERTIFY THAT: 1. LOTS 1 TO 299, BOTH INCLUSIVE, BLOCKS 300 TO 336, BOTH INCLUSIVE, BLOCK 335, STREET MIDDING, NAMELY, BLOCKS 337 AND 338, 0.30 RESERVES, NAMELY, BLOCKS 339 TO 350, BOTH INCLUSIVE, STREETS NAMELY, BETSY DRIVE, CHERRHURST ROAD (BOTH PORTIONS), COLTON WAY, CULP TRAIL, EBELY WOODS DRIVE, ELLEN DAVIDSON DRIVE, HOY CRESCENT (BOTH PORTIONS), HORTON WAY, KAITING TRAIL, PRESERVE DRIVE, SARAH CLINE DRIVE, SAMUEL STREET (BOTH PORTIONS), NORTH PARK BOULEVARD, LANE 142, LANE 143, LANE 144, LANE 145, LANE 146 AND LANE 147, HAVE BEEN Laid OUT IN ACCORDANCE WITH OUR INSTRUCTIONS. 2. THE STREETS ARE HEREBY DEDICATED AS PUBLIC HIGHWAYS TO THE CORPORATION OF THE TOWN OF OAKVILLE. 3. THE STREET MIDDINGS, NAMELY, BLOCKS 337 AND 338, ARE HEREBY DEDICATED AS PUBLIC HIGHWAYS TO THE REGIONAL MUNICIPALITY OF HALTON.

LOWER FOURTH LIMITED DATE July 26, 2013 FRANK GORDON AUTHORIZED SIGNING OFFICER WE HAVE THE AUTHORITY TO BIND THE CORPORATION

MUNICIPAL APPROVAL APPROVED UNDER SECTION 51 OF THE PLANNING ACT, R.S.O. 1990, c.P. 45, AS AMENDED, BY THE DIRECTOR OF PLANNING SERVICES OF THE TOWN OF OAKVILLE. THIS 9th DAY OF August 2013

DANA BRADY DIRECTOR OF PLANNING SERVICES TOWN OF OAKVILLE (AUTHORITY GRANTED BY BY-LAW 1998-272, AS AMENDED)

DUNDAS STREET (REGIONAL ROAD NO. 5) P.L.N. 2492B-0248 (DESIGNATED A REGIONAL ROAD BY BY-LAW 10-04, UNREGISTERED) (FORMERLY THE KING'S HIGHWAY NO. 5, TRANSFERRED TO THE REGIONAL MUNICIPALITY OF HALTON BY ORDER-IN-COUNCIL 00-225/97, INST. No. LTT19589, AMENDED BY ORDER-IN-COUNCIL 00-2418/98, INST. No. HR120129) (PART 1, M.T.O. PLAN P-2074-173A)