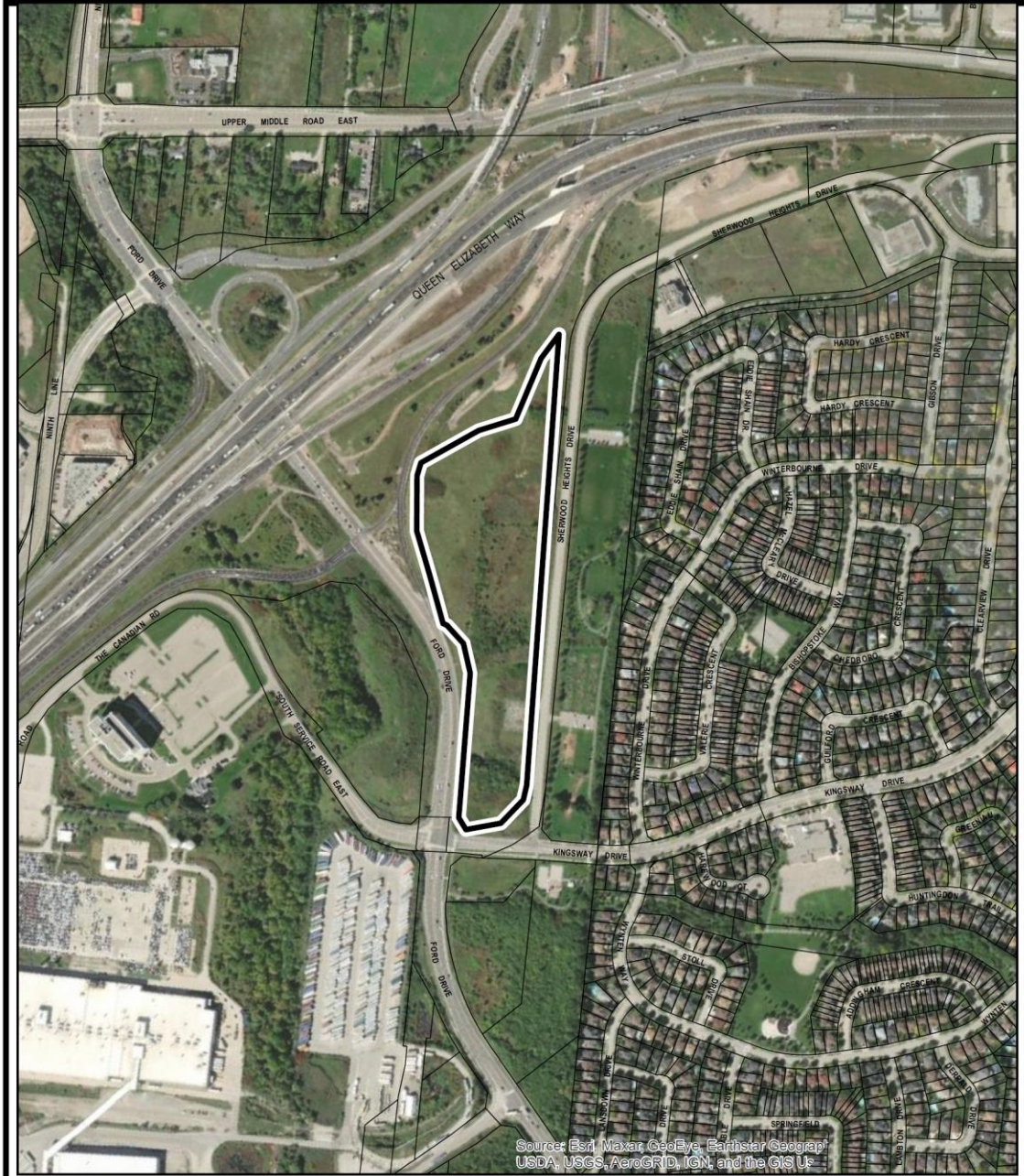
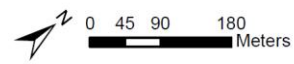



# APPENDIX A – MAPPING

## LOCATION/AIR PHOTO



Source: Esri, Maxar, GeoEye, Earthstar Geographics, USDA, USGS, AeroGRID, IGN, and the GIS User Community



 **SUBJECT LANDS**

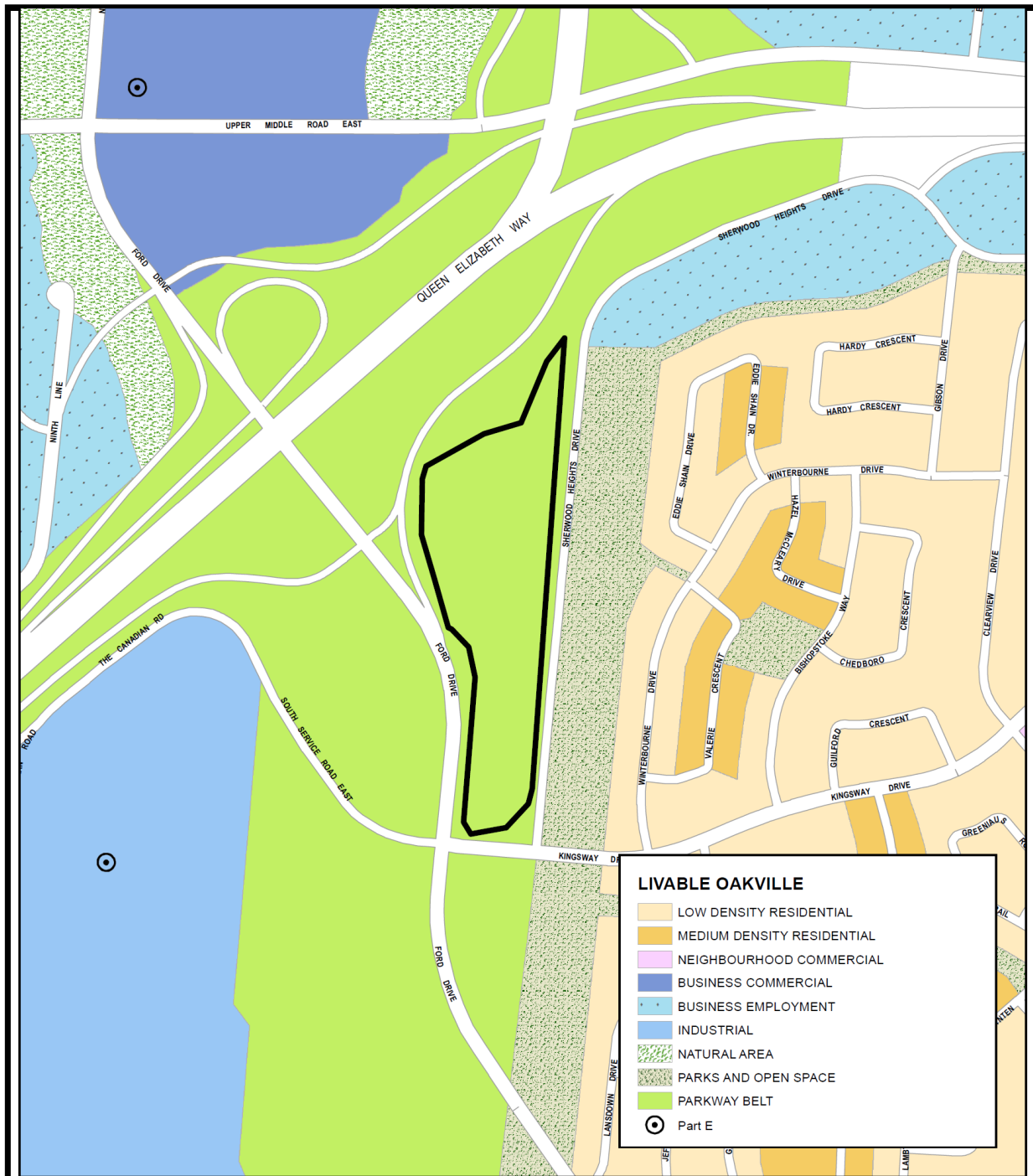
**GSP Group Inc.**  
2551 Sherwood Heights Drive  
**OPA 1504.03**

**AIR PHOTO**

Community Development Commission

S:\DEPARTME\PLANNING\1  
PLANNING REPORT MAPS\OPA REPORT MAPS\OPA 1504.03\REPORT MAPS.MXD

# EXISTING OFFICIAL PLAN



**LIVABLE OAKVILLE**

- LOW DENSITY RESIDENTIAL
- MEDIUM DENSITY RESIDENTIAL
- NEIGHBOURHOOD COMMERCIAL
- BUSINESS COMMERCIAL
- BUSINESS EMPLOYMENT
- INDUSTRIAL
- NATURAL AREA
- PARKS AND OPEN SPACE
- PARKWAY BELT
- ⊙ Part E



**SUBJECT LANDS**



0 45 90 180  
Meters

**GSP Group Inc.**

2551 Sherwood Heights Drive

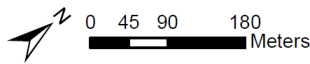
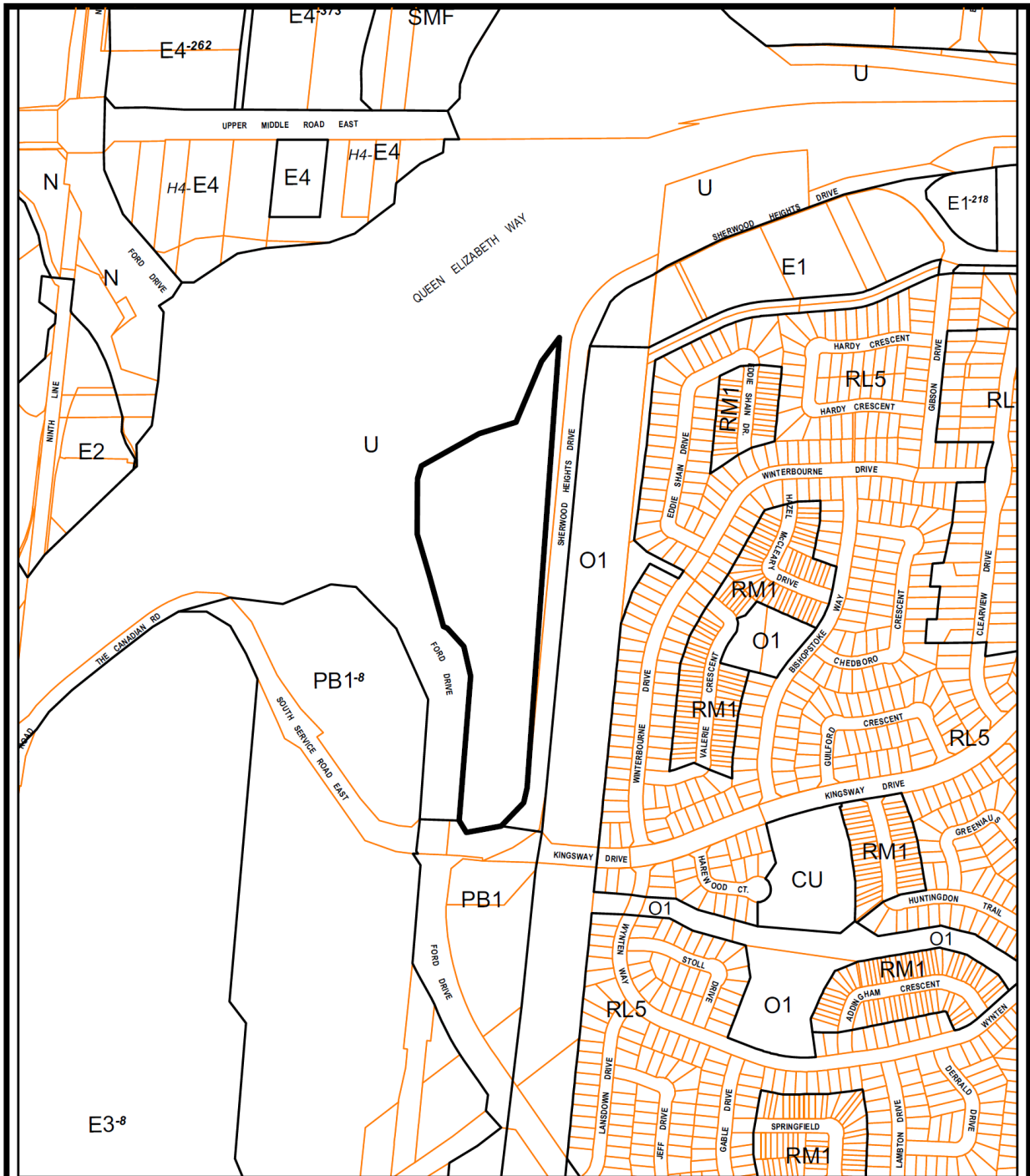
**OPA 1504.03**

**OFFICIAL  
PLAN**

Community Development Commission

S:\DEPT\M\PLANNING\PLANNING REPORT MAPS\1504 REPORT MAPS\OPA 1504.03\OFFICIAL PLANS.MXD

# EXISTING ZONING



**□** SUBJECT LANDS

**GSP Group Inc.**  
 2551 Sherwood Heights Drive  
 OPA 1504.03

**ZONING BY-LAW**  
**2014-014**

Community Development Commission

S:\DEPARTMENT\PLANNING\PLANNING REPORT MAPS\OPA REPORT MAPS\OPA 1504.03\REPORT MAPS.MXD